



## S638 CITY CONVOY

### PREMIUM URBAN TRANSIT

The S638 is a long wearing tire best suited for city transit buses. The wide shoulder rib is designed to stand up to lateral scrubbing. The 5/32" sidewall protection rib protects the casing from curb abrasion common in this application.

#### FEATURES & BENEFITS:

- Suitable for all positions
- Long wearing for low cost per mile
- Sidewall protection to resist curb scrubbing
- 3PMS Certified model for winter traction

#### APPLICATIONS:

- **INTER-CITY TRANSIT BUSES**
- **TANDEM TRAILERS**



Code	Size	LI / SR	PR	T.D.	RIM	O.D.	S.W.	S.L.R.	LCCx1	LCCx2	A.P.
1602453	305/70R22.5	153/150K	20	22	9.00	39.4	12.0	18.2	8,050	7,390	130

## QUALITY

Factory testing for uniformity ensures maximum ride comfort and quality performance.

## WARRANTY

All Sailun products are covered by an industry leading new 8 year warranty.

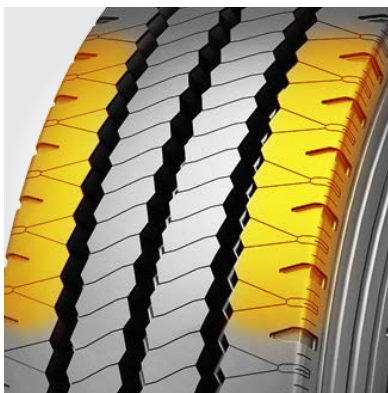
## COMPETITIVE PRODUCTS

Bridgestone R192  
Hankook SmartCity AU04

Sidewall protection to resist curb scrubbing.



Wide shoulder rib designed to stand up to lateral scrubbing.



Siping for added traction in wet and icy conditions

