



## S624 EFT

### PREMIUM LINE-HAUL TRAILER

The S624 EFT is a premium free-rolling position trailer tire for on highway applications. The tread pattern features a decoupling groove to resist irregular wear. The rib pattern promotes long even wear and low rolling resistance. The S624 EFT utilizes new Advanced Compound Technology tread compound. Advanced Compound Technology is produced by mixing in a fluid state for the best compound dispersion. The benefit of Advanced Compound Technology is maximized mileage, wet traction and rolling resistance without compromise.

#### FEATURES & BENEFITS:

- Decoupling grooves help minimize irregular wear.
- Micro-sipes improve traction in wet conditions and dissipate heat for prolonged tread life.
- Advanced Compound Technology for maximum mileage, wet traction and rolling resistance
- Smartway verified

#### APPLICATIONS:

- **TANDEM TRAILERS**



| Code    | Size        | LI / SR   | PR | T.D. | RIM  | O.D. | S.W. | S.L.R. | LCCx1 | LCCx2 | A.P. |
|---------|-------------|-----------|----|------|------|------|------|--------|-------|-------|------|
| 9630534 | 11R22.5     | 144/142 M | 14 | 12   | 8.25 | 41.5 | 11.0 | 19.3   | 6,175 | 5,840 | 105  |
| 9630535 | 11R24.5     | 146/143 M | 14 | 12   | 8.25 | 43.5 | 11.0 | 20.3   | 6,610 | 6,005 | 105  |
| 9630536 | 295/75R22.5 | 144/141 M | 14 | 12   | 9.00 | 39.9 | 11.7 | 18.7   | 6,175 | 5,675 | 110  |
| 9630537 | 285/75R24.5 | 144/141 M | 14 | 12   | 8.25 | 41.3 | 11.1 | 19.4   | 6,175 | 5,675 | 110  |

### QUALITY

Sailun technology and quality of the S624 EFT will be approved for Smartway once verified by the U.S. EPA.

### WARRANTY

All Sailun products are covered by an industry leading new 8 year warranty.

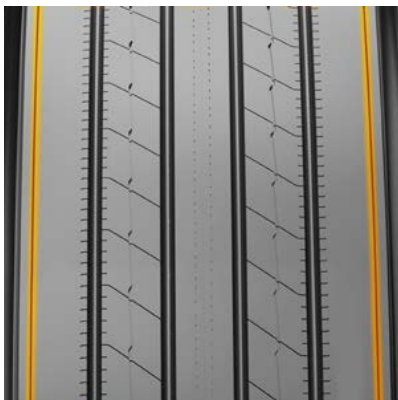
### RETREADABILITY

Three Recap Casing Warranty with a Casing Retread Allowance.

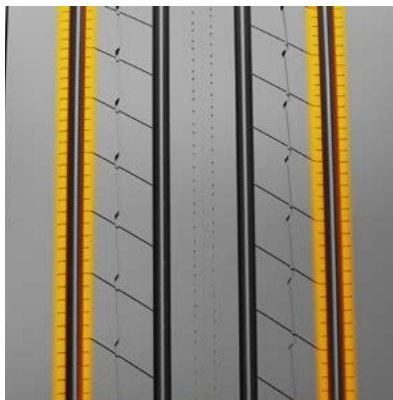
### COMPETITIVE PRODUCTS

Bridgestone R197 Ecopia, Goodyear G316

Decoupling groove helps to minimize irregular wear



Micro-sipes improve traction in wet conditions and dissipate heat for prolonged tread life



Shallow five-rib design and Advanced Compound Technology for low rolling resistance

