



S917

ON/OFF-ROAD TRACTION

The Sailun S917 drive tire has been engineered to perform in demanding off-road conditions such as mining, construction and logging applications. The S917 features an aggressive multi-lug tread design for exceptional off-road traction and an enhanced rubber compound to resist cuts and chunking. Open shoulder ribs deliver superior stability and resistance to uneven wear. The S917's deep 31/32" tread depth provides long tread life and an exceptional cost per mile.

FEATURES & BENEFITS:

- Aggressive multi-lug design.
- Deep tread depth for excellent tread life.
- Open shoulder design for excellent traction.

APPLICATIONS:

- **LOGGING TRUCKS**
- **READY MIX TRUCKS**
- **REFUSE TRUCKS**
- **DUMP TRUCKS**



| CODE | SIZE | LI / SR | PR | T.D. | RIM | O.D. | S.W. | S.L.R. | LCCX1 | LCCX2 | A.P. |
|---------|------------|-----------|----|------|------|------|------|--------|-------|-------|------|
| 8256851 | 11R22.5 | 148/145 G | 16 | 31 | 8.25 | 42.1 | 10.9 | 19.6 | 6,940 | 6,395 | 123 |
| 1001252 | 11R24.5 | 149/146 G | 16 | 31 | 8.25 | 43.9 | 11.0 | 20.6 | 7,160 | 6,610 | 120 |
| 8246837 | 12.00R24 ^ | 160/157 F | 20 | 32 | 8.50 | 48.7 | 12.4 | 22.8 | 9,920 | 9,090 | 120 |

^ Denotes Tube Type

QUALITY

Every Sailun S917 tire is tested for uniformity at the factory to ensure maximum ride comfort and quality performance.

WARRANTY

All Sailun products are covered by an industry leading new 8 year warranty

RETREADABILITY

Three Recap Casing Warranty with a Casing Retread Allowance.

*See Sailun Medium Radial Truck Tire Limited Warranty for complete details.

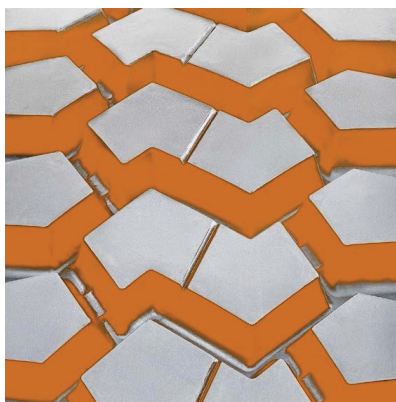
COMPETITIVE PRODUCTS

Bridgestone L320, Sumitomo ST900

Aggressive multi-lug design



Deep tread depth for excellent tread life



Open shoulder design for excellent traction

