



S668

REGIONAL ALL-POSITION / TRAILER

The Sailun S668 is a regional radial tire designed for all positions and best suited for use on multi-axle and spread-axle trailers. The contoured shoulders and special Cut and Chip rubber compounding make the S668 ideal for use on multi-axle and spread-axle trailers.

FEATURES & BENEFITS:

- 5-Rib tread pattern promotes stable on road performance and even tread wear.
- Cut and Chip resistant rubber compound.
- Solid shoulder design promotes lateral stability for all positions.
- Wide tread footprint maximizes tread life.

APPLICATIONS:

- **SPREAD-AXLE TRAILERS**
- **MULTI-AXLE TRAILERS**
- **PICK-UP AND DELIVERY TRUCKS**
- **REGIONAL TRUCKS**



CODE	SIZE	LI / SR	PR	T.D.	RIM	O.D.	S.W.	S.L.R.	LCCX1	LCCX2	A.P.
5542483	11R22.5	146/143 M	16	16	8.25	41.5	11.0	19.3	6,610	6,005	120
5542487	11R24.5	149/146 M	16	16	8.25	43.5	11.0	20.2	7,160	6,610	120
5543368	255/70R22.5	140/137 L	16	16	7.50	36.6	10.0	17.1	5,510	5,070	120
5542488	295/75R22.5	144/141 M	14	16	9.00	39.9	11.7	18.6	6,175	5,675	110

QUALITY

Every Sailun S668 tire is tested for uniformity at the factory to ensure maximum ride comfort and quality performance.

WARRANTY

All Sailun products are covered by an industry leading new 8 year warranty.

RETREADABILITY

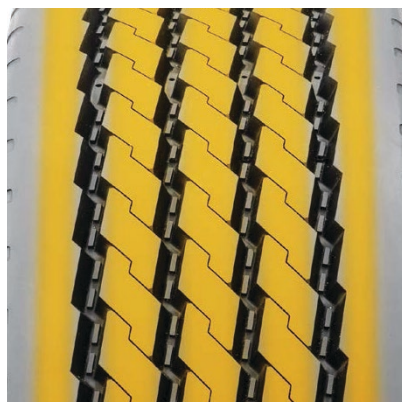
Three Recap Casing Warranty with a Casing Retread Allowance.

*See Sailun Medium Radial Truck Tire Limited Warranty for complete details.

COMPETITIVE PRODUCTS

Bridgestone R196

5-Rib tread pattern promotes stable road performance and even wear.



Contoured solid shoulder for high scrub applications.



Stone ejectors protect tire against stone drilling.

