



SAFARI



2024 PASSENGER &
LIGHT TRUCK TIRES



ABOUT US

Sailun offers a complete lineup of business solutions with unsurpassed product and unmatched customer experience in the value tire segment. We are the undisputed leader in the value tier. Our products are available in over 135 countries globally and we are ranked the twelfth largest tire manufacturer. With best-in-class warranties and support you can be sure you're getting excellent value and a product you can be confident in. We're a different kind of tire company:

- North American based engineering, testing and research and development makes us a leader in product development for exceptional performance in every application and multi-compounds
- Advanced product development and engineering improvement through dedicated Sailun-owned and operated manufacturing and research and development facilities.
- Delivering value-based tire brands by ensuring cost containment through true vertical integration
- North American Sales and Marketing support with a strong foundation of supply chain excellence
- Proven track record of quality products developed under multiple commercial tire brands
- We stand behind our engineering and quality with best-in-class warranties and support

FOCUSED ON WHAT MATTERS TO YOU

Sailun Tire is a leading global tire manufacturer and top provider of quality products in the value tire segment. The Sailun mission is to deliver the best products and customer experience in the tire industry. Sailun engineers, designs, manufactures and supports a full lineup of surprisingly affordable tires in a wide range of popular sizes for countless cars, crossovers, trucks and SUVs, plus a wide range of commercial vehicle tire applications.

CONTENTS

PASSENGER TIRES:

04



INSPIRE
ALL-SEASON TOURING TIRE

06



ATREZZO SH408
ALL-SEASON TOURING PERFORMANCE TIRE

08



ATREZZO SVA1
ULTRA-HIGH PERFORMANCE ALL-SEASON TIRE

10



ATREZZO SVA2
ULTRA-HIGH PERFORMANCE ALL-SEASON TIRE

LIGHT TRUCK TIRES:

12



ATREZZO TCON
ALL-SEASON SUV TIRE

14



ATREZZO SVR LX+
HIGH PERFORMANCE SUV TIRE

16



TERRAMAX HLT
ALL-SEASON LIGHT TRUCK & SUV TIRE

18



TERRAMAX AT2
ON/OFF ROAD LIGHT TRUCK & SUV TIRE

20



TERRAMAX A/T 4S
ON/OFF ROAD LIGHT TRUCK & SUV TIRE

22



TERRAMAX RT
ON/OFF ROAD LIGHT TRUCK & SUV - RUGGED TERRAIN

24



TERRAMAX HLT-C
ALL-SEASON COMMERCIAL LIGHT TRUCK TIRE

ELECTRIC VEHICLE (EV) TIRES:

26



ERANGE EV ECO.SPHERE
ELECTRIC VEHICLE ALL-SEASON TIRE

WINTER TIRE

28



ICEBLAZER WSTX
STUDDABLE PERFORMANCE WINTER TIRE



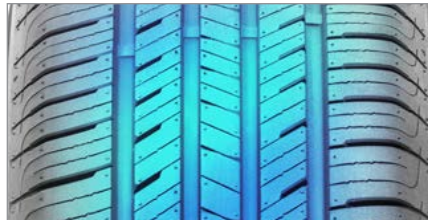
INSPIRE

ALL-SEASON TOURING TIRE

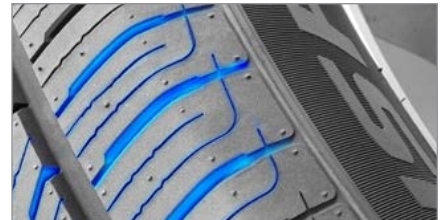
The Sailun Inspire is the ultimate all-season touring tire designed for a wide range of popular compacts, sedans, crossovers and SUVs. Quiet, comfortable, and secure, the Inspire offers unmatched levels of ride quality and driver confidence.



ADVANCED RUBBER COMPOUND
Proprietary SertaGrip™ compound increases traction, control and longevity in wet and dry conditions.

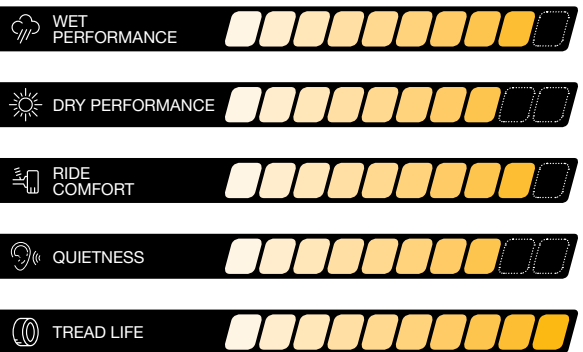


SILENTTREAD™ PATTERN
SilentTread™ pattern uses staggered tuning technology and variable pitch sequence for quiet, comfort and safety.

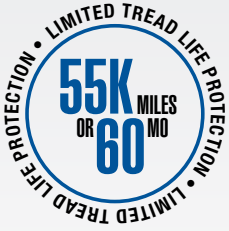


3D MULTI-SIPE TECHNOLOGY
Expands and expels substances for confident performance that regenerates with tire wear.

| UTQG RATING | |
|-------------|-----------|
| T | = 520 A A |
| H | = 520 A A |
| V | = 520 A A |
| W | = 520 A A |



| ARTICLE NO. | TIRE SIZE | SERVICE DESC. | LOAD RANGE | UTQG | TREAD DEPTH (32ND) | SIDE WALL | RIM WIDTH | SECTION WIDTH | OVERALL DIAMETER | SINGLE MAX LOAD (LBS @ PSI) | SHIP WEIGHT (LBS) |
|-------------|-----------|---------------|------------|---------|--------------------|-----------|-----------|---------------|------------------|-----------------------------|-------------------|
| 5544166 | 175/65R14 | 82H | SL | 520 A A | 10 | BLK | 5.0 | 7.0 | 23.0 | 1047@44 | 15 |
| 5544176 | 175/70R14 | 84T | SL | 520 A A | 10 | BLK | 5.0 | 7.0 | 23.7 | 1102@44 | 16 |
| 5544053 | 185/65R14 | 86H | SL | 520 A A | 10 | BLK | 5.5 | 7.4 | 23.5 | 1168@44 | 17 |
| 5544174 | 195/70R14 | 91T | SL | 520 A A | 10 | BLK | 6.0 | 7.9 | 24.8 | 1356@44 | 18 |
| 5544183 | 175/65R15 | 84H | SL | 520 A A | 10 | BLK | 5.0 | 7.0 | 24.0 | 1102@44 | 16 |
| 5544184 | 185/55R15 | 82H | SL | 520 A A | 10 | BLK | 6.0 | 7.6 | 23.0 | 1047@44 | 16 |
| 5544060 | 185/60R15 | 84H | SL | 520 A A | 10 | BLK | 5.5 | 7.4 | 23.7 | 1102@44 | 17 |
| 5544056 | 185/65R15 | 88H | SL | 520 A A | 10 | BLK | 5.5 | 7.4 | 24.5 | 1235@44 | 18 |
| 5544059 | 195/55R15 | 85V | SL | 520 A A | 10 | BLK | 6.0 | 7.9 | 23.4 | 1135@44 | 18 |
| 5543830 | 195/60R15 | 88H | SL | 520 A A | 10 | BLK | 6.0 | 7.9 | 24.2 | 1235@44 | 18 |
| 5543829 | 195/65R15 | 91H | SL | 520 A A | 10 | BLK | 6.0 | 7.9 | 25.0 | 1356@44 | 19 |
| 5544169 | 205/65R15 | 94H | SL | 520 A A | 10 | BLK | 6.0 | 8.2 | 25.5 | 1477@44 | 20 |
| 5544185 | 205/70R15 | 96T | SL | 520 A A | 10 | BLK | 6.0 | 8.2 | 26.3 | 1565@44 | 22 |
| 5544181 | 215/70R15 | 98T | SL | 520 A A | 10 | BLK | 6.5 | 8.7 | 26.9 | 1653@44 | 24 |
| 5544179 | 195/50R16 | 84V | SL | 520 A A | 10 | BLK | 6.0 | 7.9 | 23.7 | 1102@44 | 19 |
| 5544182 | 195/55R16 | 87H | SL | 520 A A | 10 | BLK | 6.0 | 7.9 | 24.4 | 1201@44 | 19 |
| 5544058 | 205/50R16 | 87V | SL | 520 A A | 10 | BLK | 6.5 | 8.4 | 24.1 | 1201@44 | 20 |
| 5543827 | 205/55R16 | 91V | SL | 520 A A | 10 | BLK | 6.5 | 8.4 | 24.9 | 1356@44 | 20 |
| 5544054 | 205/60R16 | 92V | SL | 520 A A | 10 | BLK | 6.0 | 8.2 | 25.7 | 1389@44 | 21 |
| 5544170 | 205/65R16 | 95H | SL | 520 A A | 10 | BLK | 6.0 | 8.2 | 26.5 | 1521@44 | 23 |
| 5544172 | 215/55R16 | 93H | SL | 520 A A | 10 | BLK | 7.0 | 8.9 | 25.3 | 1433@44 | 22 |
| 5543828 | 215/60R16 | 95V | SL | 520 A A | 10 | BLK | 6.5 | 8.7 | 26.1 | 1521@44 | 23 |
| 5544168 | 215/65R16 | 98T | SL | 520 A A | 10 | BLK | 6.5 | 8.7 | 27.0 | 1653@44 | 24 |
| 5546491 | 225/55R16 | 95H | | 520 A A | 10 | BLK | 7.0 | 9.2 | 25.8 | 1521@44 | 25 |
| 5544052 | 225/60R16 | 98H | SL | 520 A A | 10 | BLK | 6.5 | 9.0 | 26.6 | 1653@44 | 25 |
| 5544171 | 225/65R16 | 100T | SL | 520 A A | 10 | BLK | 6.5 | 9.0 | 27.5 | 1764@44 | 25 |
| 5543826 | 235/60R16 | 100V | SL | 520 A A | 10 | BLK | 7.0 | 9.5 | 27.1 | 1764@44 | 26 |
| 5544175 | 235/65R16 | 103T | SL | 520 A A | 10 | BLK | 7.0 | 9.5 | 28.0 | 1929@44 | 27 |
| 5543825 | 205/50R17 | 93V | XL | 520 A A | 10 | BLK | 6.5 | 8.4 | 25.1 | 1433@50 | 22 |
| 5543824 | 215/45R17 | 87W | SL | 520 A A | 10 | BLK | 7.0 | 8.4 | 24.7 | 1201@44 | 20 |
| 5544180 | 215/50R17 | 95V | XL | 520 A A | 10 | BLK | 7.0 | 8.9 | 25.5 | 1521@50 | 23 |
| 5544057 | 215/55R17 | 94V | SL | 520 A A | 10 | BLK | 7.0 | 8.9 | 26.3 | 1477@44 | 23 |
| 5544178 | 215/60R17 | 96T | SL | 520 A A | 10 | BLK | 6.5 | 8.7 | 27.2 | 1565@44 | 25 |
| 5544173 | 215/65R17 | 99T | SL | 520 A A | 10 | BLK | 6.5 | 8.7 | 28.0 | 1709@44 | 26 |
| 5546490 | 225/45R17 | 91V | | 520 A A | 10 | BLK | 7.5 | 8.9 | 25.0 | 1356@44 | 23 |
| 5544167 | 225/50R17 | 94V | SL | 520 A A | 10 | BLK | 7.0 | 9.2 | 25.9 | 1477@44 | 24 |
| 5544177 | 225/55R17 | 97V | SL | 520 A A | 10 | BLK | 7.0 | 9.2 | 26.8 | 1609@44 | 26 |
| 5544055 | 225/60R17 | 99T | SL | 520 A A | 10 | BLK | 6.5 | 9.0 | 27.6 | 1709@44 | 26 |
| 5544051 | 225/65R17 | 102T | SL | 520 A A | 10 | BLK | 6.5 | 9.0 | 28.5 | 1874@44 | 27 |
| 5546492 | 235/45R17 | 97W | XL | 520 A A | 10 | BLK | 8.0 | 9.3 | 25.4 | 1609@50 | 24 |
| 5546493 | 235/50R17 | 96V | | 520 A A | 10 | BLK | 7.5 | 9.7 | 26.3 | 1565@44 | 26 |
| 5543823 | 235/55R17 | 99V | SL | 520 A A | 10 | BLK | 7.5 | 9.7 | 27.2 | 1709@44 | 26 |
| 5546499 | 245/40R17 | 91V | | 520 A A | 10 | BLK | 8.5 | 9.8 | 24.7 | 1356@44 | 23 |
| 5546494 | 245/45R17 | 99W | XL | 520 A A | 10 | BLK | 8.0 | 9.6 | 25.7 | 1709@50 | 25 |
| 5543822 | 225/40R18 | 92W | XL | 520 A A | 10 | BLK | 8.0 | 9.1 | 25.1 | 1389@50 | 22 |
| 5543821 | 225/45R18 | 95W | XL | 520 A A | 10 | BLK | 7.5 | 8.9 | 25.9 | 1521@50 | 23 |
| 5546496 | 225/55R18 | 98V | | 520 A A | 10 | BLK | 7.0 | 9.2 | 27.8 | 1653@44 | 27 |
| 5543817 | 225/60R18 | 100H | SL | 520 A A | 10 | BLK | 6.5 | 9.0 | 28.6 | 1764@44 | 28 |
| 5546488 | 235/45R18 | 94V | | 520 A A | 10 | BLK | 8.0 | 9.3 | 26.3 | 1477@44 | 25 |
| 5543820 | 235/50R18 | 97W | SL | 520 A A | 10 | BLK | 7.5 | 9.7 | 27.3 | 1609@44 | 27 |
| 5546486 | 235/55R18 | 100V | | 520 A A | 10 | BLK | 7.5 | 9.7 | 28.2 | 1764@44 | 28 |
| 5546487 | 235/60R18 | 103V | | 520 A A | 10 | BLK | 7.0 | 9.5 | 29.1 | 1929@44 | 29 |
| 5546489 | 235/65R18 | 106H | | 520 A A | 10 | BLK | 7.0 | 9.5 | 30.0 | 2094@44 | 31 |
| 5543819 | 245/40R18 | 97W | XL | 520 A A | 10 | BLK | 7.5 | 9.8 | 25.7 | 1609@50 | 25 |
| 5543818 | 245/45R18 | 100W | XL | 520 A A | 10 | BLK | 8.0 | 9.6 | 26.7 | 1764@50 | 26 |
| 5543816 | 225/55R19 | 99V | SL | 520 A A | 10 | BLK | 7.0 | 9.2 | 28.8 | 1709@44 | 28 |
| 5544186 | 235/40R19 | 96V | XL | 520 A A | 10 | BLK | 8.5 | 9.5 | 26.4 | 1565@50 | 25 |
| 5543815 | 235/55R19 | 105V | XL | 520 A A | 10 | BLK | 7.5 | 9.7 | 29.2 | 2039@50 | 29 |
| 5546495 | 245/40R19 | 98W | XL | 520 A A | 10 | BLK | 8.5 | 9.8 | 26.7 | 1653@50 | 27 |
| 5546498 | 245/45R19 | 98W | | 520 A A | 10 | BLK | 8.0 | 9.6 | 27.7 | 1653@44 | 28 |
| 5041737 | 255/45R19 | 104H | XL | 520 A A | 10 | BLK | 8.5 | 10.0 | 28.1 | 1984@50 | 29 |
| 5543814 | 255/60R19 | 109H | SL | 520 A A | 10 | BLK | 7.5 | 10.2 | 31.1 | 2271@44 | 35 |
| 5546500 | 245/45R20 | 99V | | 520 A A | 10 | BLK | 8.0 | 9.6 | 28.7 | 1709@44 | 29 |
| 5546497 | 255/45R20 | 101V | | 520 A A | 10 | BLK | 7.5 | 10.0 | 29.1 | 1819@44 | 30 |



ATREZZO SH408

ALL-SEASON PERFORMANCE TIRE

The Atrezzo SH408 is a modern all season tread design that provides increased handling and traction, while still offering a safe and comfortable driving experience.



OPTIMIZED CONTACT AREA

Tread blocks with wide shoulder blocks promote stability and reliable traction.



CIRCUMFERENTIAL GROOVES

Four straight channel grooves improve wet handling and hydroplane resistance.

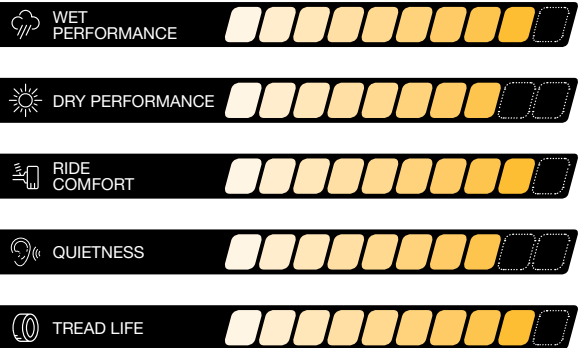


MULTI PITCH TREAD DESIGN

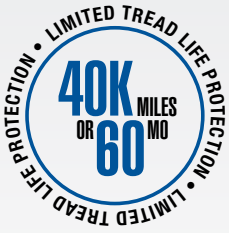
Staggered lug tread pattern ensures effective road harmonics providing a quiet ride.

RIDE COMFORT

Proprietary rubber compounds and tread optimization result in quiet, comfortable ride while promoting even wear characteristics.



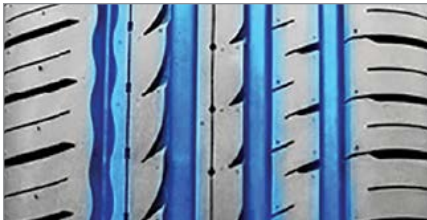
| ARTICLE NO. | TIRE SIZE | SERVICE DESC. | LOAD RANGE | UTQG | TREAD DEPTH (32ND) | SIDE WALL | RIM WIDTH | SECTION WIDTH | OVERALL DIAMETER | SINGLE MAX LOAD (LBS @ PSI) | SHIP WEIGHT (LBS) |
|-------------|-----------|---------------|------------|---------|--------------------|-----------|-----------|---------------|------------------|-----------------------------|-------------------|
| 9630405 | 175/65R14 | 82H | | 420 A A | 10 | BSW | 5.0 | 7.0 | 23.0 | 1047@44 | 16 |
| 9630394 | 175/70R14 | 84T | | 420 A A | 10 | BSW | 5.0 | 7.0 | 23.7 | 1102@44 | 17 |
| 9630412 | 185/60R14 | 82H | | 420 A A | 10 | BSW | 5.5 | 7.4 | 22.8 | 1047@44 | 17 |
| 9630393 | 185/65R14 | 86H | | 420 A A | 10 | BSW | 5.5 | 7.4 | 23.5 | 1168@44 | 17 |
| 9630401 | 185/70R14 | 88T | | 420 A A | 10 | BSW | 5.5 | 7.4 | 24.3 | 1235@44 | 18 |
| 9630396 | 195/70R14 | 91T | | 420 A A | 10 | BSW | 6.0 | 7.9 | 24.8 | 1356@44 | 20 |
| 9630407 | 205/70R14 | 95T | | 420 A A | 10 | BSW | 6.0 | 8.2 | 25.4 | 1521@44 | 22 |
| 9630399 | 175/65R15 | 84H | | 420 A A | 10 | BSW | 5.0 | 7.0 | 24.0 | 1102@44 | 16 |
| 9630400 | 185/55R15 | 82H | | 420 A A | 10 | BSW | 6.0 | 7.6 | 23.0 | 1047@44 | 17 |
| 9630312 | 185/60R15 | 84H | | 420 A A | 10 | BSW | 5.5 | 7.4 | 23.7 | 1102@44 | 18 |
| 9630382 | 185/65R15 | 88H | | 420 A A | 10 | BSW | 5.5 | 7.4 | 24.4 | 1235@44 | 18 |
| 9630417 | 195/50R15 | 82H | | 420 A A | 10 | BSW | 6.0 | 7.9 | 22.7 | 1047@44 | 18 |
| 9630410 | 195/55R15 | 85V | | 420 A A | 10 | BSW | 6.0 | 7.9 | 23.4 | 1135@44 | 18 |
| 9630388 | 195/60R15 | 88H | | 420 A A | 10 | BSW | 6.0 | 7.9 | 24.2 | 1235@44 | 18 |
| 9630378 | 195/65R15 | 91H | | 420 A A | 10 | BSW | 6.0 | 7.9 | 25.0 | 1356@44 | 20 |
| 9630408 | 205/60R15 | 91H | | 420 A A | 10 | BSW | 6.0 | 8.2 | 24.7 | 1356@44 | 21 |
| 9630387 | 205/65R15 | 94H | | 420 A A | 10 | BSW | 6.0 | 8.2 | 25.5 | 1477@44 | 21 |
| 9630395 | 205/70R15 | 96T | | 420 A A | 10 | BSW | 6.0 | 8.2 | 26.3 | 1565@44 | 23 |
| 9630423 | 215/60R15 | 94H | | 420 A A | 10 | BSW | 6.5 | 8.7 | 25.2 | 1477@44 | 22 |
| 9630419 | 215/65R15 | 96H | | 420 A A | 10 | BSW | 6.5 | 8.7 | 26.0 | 1565@44 | 24 |
| 9630389 | 215/70R15 | 98T | | 420 A A | 10 | BSW | 6.5 | 8.7 | 26.9 | 1653@44 | 25 |
| 9630402 | 195/50R16 | 84V | | 420 A A | 10 | BSW | 6.0 | 7.9 | 23.7 | 1102@44 | 20 |
| 9630404 | 195/55R16 | 87H | | 420 A A | 10 | BSW | 6.0 | 7.9 | 24.4 | 1201@44 | 19 |
| 9630409 | 205/50R16 | 87V | | 420 A A | 10 | BSW | 6.5 | 8.4 | 24.1 | 1201@44 | 21 |
| 9630374 | 205/55R16 | 91V | | 420 A A | 10 | BSW | 6.5 | 8.4 | 24.9 | 1356@44 | 21 |
| 9630383 | 205/60R16 | 92H | | 420 A A | 10 | BSW | 6.0 | 8.2 | 25.7 | 1389@44 | 22 |
| 9630379 | 205/65R16 | 95H | | 420 A A | 10 | BSW | 6.0 | 8.2 | 26.5 | 1521@44 | 23 |
| 9630384 | 215/55R16 | 97H | XL | 420 A A | 10 | BSW | 7.0 | 8.9 | 25.3 | 1609@50 | 23 |
| 9630377 | 215/60R16 | 95V | | 420 A A | 10 | BSW | 6.5 | 8.7 | 26.1 | 1521@44 | 24 |
| 9630392 | 215/65R16 | 98T | | 420 A A | 10 | BSW | 6.5 | 8.7 | 27.0 | 1653@44 | 24 |
| 9630418 | 225/50R16 | 92H | | 420 A A | 10 | BSW | 7.0 | 9.2 | 24.9 | 1389@44 | 24 |
| 9630406 | 225/55R16 | 99H | XL | 420 A A | 10 | BSW | 7.0 | 9.2 | 25.7 | 1709@50 | 25 |
| 9630385 | 225/60R16 | 98H | | 420 A A | 10 | BSW | 6.5 | 9.0 | 26.6 | 1653@44 | 26 |
| 9630397 | 225/65R16 | 100T | | 420 A A | 10 | BSW | 6.5 | 9.0 | 27.5 | 1764@44 | 26 |
| 1600208 | 235/60R16 | 100H | SL | 420/A/A | 10 | BSW | 6.5 | 9.4 | 25.64 | 1764@44 | 26 |
| 9630398 | 235/65R16 | 103T | | 420 A A | 10 | BSW | 7.0 | 9.4 | 28.0 | 1929@44 | 27 |
| 9630411 | 205/50R17 | 93V | XL | 420 A A | 10 | BSW | 6.5 | 8.4 | 25.1 | 1433@50 | 22 |
| 9630403 | 215/45R17 | 87H | | 420 A A | 10 | BSW | 7.0 | 8.4 | 24.6 | 1201@44 | 21 |
| 9630413 | 215/50R17 | 95V | XL | 420 A A | 10 | BSW | 7.0 | 8.9 | 25.5 | 1521@50 | 22 |
| 9630375 | 215/55R17 | 94V | | 420 A A | 10 | BSW | 7.0 | 8.9 | 26.3 | 1477@44 | 22 |
| 9630390 | 215/60R17 | 96T | | 420 A A | 10 | BSW | 6.5 | 8.7 | 27.2 | 1565@44 | 25 |
| 9630391 | 215/65R17 | 99H | | 420 A A | 10 | BSW | 6.5 | 8.7 | 28.0 | 1709@44 | 25 |
| 9630315 | 225/45R17 | 91H | | 420 A A | 10 | BSW | 7.5 | 8.9 | 25.0 | 1356@44 | 22 |
| 9630381 | 225/50R17 | 94V | | 420 A A | 10 | BSW | 7.0 | 9.2 | 25.9 | 1477@44 | 23 |
| 9630380 | 225/55R17 | 97V | | 420 A A | 10 | BSW | 7.0 | 9.2 | 26.8 | 1609@44 | 26 |
| 9630386 | 225/60R17 | 99H | | 420 A A | 10 | BSW | 6.5 | 9.0 | 27.6 | 1709@44 | 26 |
| 9630376 | 225/65R17 | 102H | | 420 A A | 10 | BSW | 6.5 | 9.0 | 28.5 | 1874@44 | 27 |
| 9630421 | 235/45R17 | 94H | | 420 A A | 10 | BSW | 8.0 | 9.3 | 25.4 | 1477@44 | 24 |
| 1600813 | 235/55R17 | 103H | XL | 420 A A | 10 | BSW | 7.5 | 9.6 | 27.1 | 1929@50 | 27 |
| 1600001 | 215/55R18 | 95V | | 420 A A | 10 | BSW | 7.0 | 8.9 | 27.3 | 1521@44 | 26 |
| 9630422 | 225/50R18 | 95H | | 420 A A | 10 | BSW | 7.0 | 9.2 | 26.9 | 1521@44 | 25 |
| 1600207 | 225/60R18 | 100H | SL | 420/A/A | 10 | BSW | 6.5 | 8.9 | 26.64 | 1764@44 | 27 |
| 1600002 | 235/45R18 | 94V | | 420 A A | 10 | BSW | 8.0 | 9.3 | 26.3 | 1477@44 | 26 |
| 9630416 | 235/50R18 | 97H | | 420 A A | 10 | BSW | 7.5 | 9.6 | 27.3 | 1609@44 | 28 |
| 9630414 | 235/55R18 | 100V | | 420 A A | 10 | BSW | 7.5 | 9.6 | 28.1 | 1764@44 | 29 |
| 9630415 | 235/60R18 | 103H | | 420 A A | 10 | BSW | 7.0 | 9.4 | 29.1 | 1929@44 | 29 |
| 1600003 | 235/40R19 | 96V | XL | 420 A A | 10 | BSW | 8.5 | 9.5 | 26.4 | 1565@50 | 25 |
| 1600004 | 245/40R19 | 98V | XL | 420 A A | 10 | BSW | 8.5 | 9.6 | 26.7 | 1653@50 | 27 |
| 1600488K | 225/45R19 | 96W | | 420/A/A | 10 | BSW | 7.5 | 8.9 | 26.9 | 1565@50 | 25 |
| 1600206 | 225/55R19 | 99V | SL | 420/A/A | 10 | BSW | 6.5 | 9.1 | 26.4 | 1709@44 | 28 |



ATREZZO SVA1

ULTRA-HIGH PERFORMANCE ALL-SEASON TIRE

The Atrezzo SVA1 is the next generation ultra-high performance all-season tire from Sailun. Engineered for high-speed performance, cornering and braking, the SVA1 lets you get more out of your car, while delivering a smooth, quiet ride.



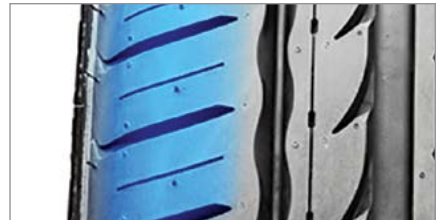
SUPERIOR TRACTION

Asymmetrical tread design delivers exceptional performance and provides increased dry and wet traction.



WAVY SOLID CENTER RIB

Reduces road noise at higher speeds and enhances directional stability.



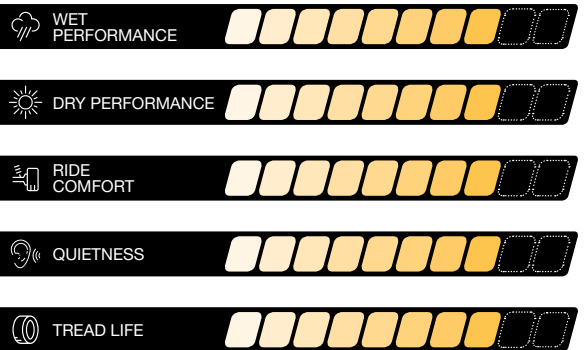
HIGH-SPEED MANEUVERABILITY

Wide shoulder blocks enhance high-speed cornering stability and handling.

UTQG RATING

V, W, Y = 340 A A

W = 380 AA A



| ARTICLE NO. | TIRE SIZE | SERVICE DESC. | LOAD RANGE | UTQG | TREAD DEPTH (32ND) | SIDE WALL | RIM WIDTH | SECTION WIDTH | OVERALL DIAMETER | SINGLE MAX LOAD (LBS @ PSI) | SHIP WEIGHT (LBS) |
|-------------|------------|---------------|------------|----------|--------------------|-----------|-----------|---------------|------------------|-----------------------------|-------------------|
| 5541044 | 205/55R16 | 91V | SL | 340 A A | 10 | BLK | 6.5 | 8.4 | 24.9 | 1356@44 | 19 |
| 5540841 | 215/55R16 | 97W | SL | 340 A A | 10 | BLK | 7.0 | 8.9 | 25.3 | 1609@49 | 22 |
| 5540843 | 225/55R16 | 99W | SL | 340 A A | 10 | BLK | 7.0 | 9.2 | 25.8 | 1709@49 | 24 |
| 5540828 | 205/50R16 | 87V | SL | 340 A A | 10 | BLK | 6.5 | 8.4 | 24.1 | 1201@44 | 19 |
| 5540816 | 205/45R16 | 87W | SL | 340 A A | 10 | BLK | 7.0 | 8.1 | 23.2 | 1201@49 | 18 |
| 5540842 | 215/55R17 | 98W | SL | 340 A A | 10 | BLK | 7.0 | 8.9 | 26.3 | 1653@49 | 22 |
| 5540845 | 225/55R17 | 101W | SL | 340 A A | 10 | BLK | 7.0 | 9.2 | 26.8 | 1819@49 | 24 |
| 5540848 | 235/55R17 | 103W | SL | 340 A A | 10 | BLK | 7.5 | 9.7 | 27.2 | 1929@49 | 25 |
| 5540829 | 205/50R17 | 93W | SL | 340 A A | 10 | BLK | 6.5 | 8.4 | 25.1 | 1433@49 | 22 |
| 5541042 | 215/50R17 | 95W | SL | 340 A A | 10 | BLK | 7.0 | 8.9 | 25.5 | 1521@49 | 22 |
| 5540831 | 225/50R17 | 98W | SL | 340 A A | 10 | BLK | 7.0 | 9.2 | 25.9 | 1653@49 | 23 |
| 5541041 | 235/50R17 | 96W | SL | 380 AA A | 10 | BLK | 7.5 | 9.7 | 26.3 | 1565@44 | 24 |
| 5540817 | 205/45R17 | 88W | SL | 340 A A | 10 | BLK | 7.0 | 8.1 | 24.3 | 1235@49 | 19 |
| 5540818 | 215/45R17 | 91W | SL | 340 A A | 10 | BLK | 7.0 | 8.4 | 24.7 | 1356@49 | 20 |
| 5540819 | 225/45R17 | 94W | SL | 340 A A | 10 | BLK | 7.5 | 8.9 | 25.0 | 1477@49 | 21 |
| 5540821 | 235/45R17 | 97W | SL | 340 A A | 10 | BLK | 8.0 | 9.3 | 25.4 | 1609@49 | 23 |
| 5541038 | 245/45R17 | 99W | SL | 380 AA A | 10 | BLK | 8.0 | 9.6 | 25.7 | 1709@50 | 24 |
| 5540803 | 205/40R17 | 84W | SL | 340 A A | 10 | BLK | 7.5 | 8.4 | 23.5 | 1102@49 | 19 |
| 5540804 | 215/40R17 | 87W | SL | 340 A A | 10 | BLK | 7.5 | 8.6 | 23.8 | 1201@49 | 20 |
| 5541036 | 245/40R17 | 95W | SL | 380 AA A | 10 | BLK | 8.5 | 9.8 | 24.7 | 1521@50 | 23 |
| 5540793 | 215/35R18 | 84W | SL | 340 A A | 10 | BLK | 7.5 | 8.6 | 23.9 | 1102@49 | 19 |
| 5540846 | 225/55R18 | 98V | SL | 340 A A | 10 | BLK | 7.0 | 9.2 | 27.8 | 1653@44 | 27 |
| 5540832 | 235/50R18 | 97W | SL | 340 A A | 10 | BLK | 7.5 | 9.7 | 27.3 | 1609@44 | 25 |
| 5541033 | 255/35R18 | 94W | SL | 380 AA A | 10 | BLK | 9.0 | 10.2 | 25.0 | 1477@50 | 25 |
| 5540820 | 225/45R18 | 95W | SL | 340 A A | 10 | BLK | 7.5 | 8.9 | 26.0 | 1521@49 | 22 |
| 5543069 | 235/45R18 | 98V | XL | 340 A A | 10 | BLK | 8.0 | 9.3 | 26.3 | 1653@50 | 25 |
| 5540822 | 245/45R18 | 100W | SL | 340 A A | 10 | BLK | 8.0 | 9.6 | 26.7 | 1764@49 | 25 |
| 5541039 | 255/45R18 | 103W | SL | 380 AA A | 11 | BLK | 8.5 | 10.0 | 27.1 | 1929@50 | 26 |
| 5540807 | 225/40R18 | 92W | SL | 340 A A | 10 | BLK | 8.0 | 9.1 | 25.1 | 1389@49 | 21 |
| 5540808 | 235/40R18 | 95W | SL | 340 A A | 10 | BLK | 8.5 | 9.5 | 25.4 | 1521@49 | 23 |
| 5540809 | 245/40R18 | 97Y | SL | 340 A A | 10 | BLK | 8.5 | 9.8 | 25.7 | 1609@49 | 24 |
| 5540833 | 245/50R18 | 104Y | XL | 340 A A | 10 | BLK | 7.5 | 9.9 | 27.6 | 1984@50 | 28 |
| 5540834 | 255/50R19 | 107V | SL | 340 A A | 11 | BLK | 8.0 | 10.4 | 29.1 | 2149@49 | 30 |
| 5541040 | 245/45R19 | 98W | SL | 380 AA A | 10 | BLK | 8.0 | 9.6 | 27.7 | 1653@44 | 26 |
| 5544309 | 235/40R19 | 96V | XL | 340 A A | 10 | BLK | 8.5 | 9.5 | 26.4 | 1565@50 | 26 |
| 5540810 | 245/40R19 | 98Y | SL | 340 A A | 10 | BLK | 8.5 | 9.8 | 26.7 | 1653@49 | 25 |
| 5543068 | 255/40R19 | 100H | XL | 340 A A | 10 | BLK | 9.0 | 10.2 | 27.1 | 1764@50 | 28 |
| 5540796 | 235/35R19 | 91W | SL | 340 A A | 10 | BLK | 8.5 | 9.5 | 25.5 | 1356@49 | 23 |
| 5541034 | 255/35R19 | 96W | SL | 380 AA A | 10 | BLK | 9.0 | 10.2 | 26.0 | 1565@50 | 26 |
| 5540823 | 245/45R20 | 103W | SL | 340 A A | 10 | BLK | 8.0 | 9.6 | 28.7 | 1929@49 | 28 |
| 5540824 | 255/45R20 | 105W | SL | 340 A A | 11 | BLK | 8.5 | 10.0 | 29.1 | 2039@49 | 28 |
| 5540795 | 225/35R20 | 90W | SL | 340 A A | 10 | BLK | 8.0 | 9.1 | 26.2 | 1323@49 | 22 |
| 5540798 | 245/35R20 | 95W | SL | 340 A A | 10 | BLK | 8.5 | 9.8 | 26.8 | 1521@49 | 25 |
| 5541035 | 255/35R20 | 97W | SL | 380 AA A | 10 | BLK | 9.0 | 10.2 | 27.0 | 1609@50 | 28 |
| 5540789 | 225/30R20 | 85Y | SL | 340 A A | 10 | BLK | 8.0 | 9.1 | 25.4 | 1135@49 | 22 |
| 5540835 | 265/50R20 | 111V | XL | 340 A A | 11 | BLK | 7.5 | 10.9 | 30.4 | 2403@50 | 35 |
| 5541037 | 275/40R20 | 106W | | 340 A A | 11 | BLK | 9.5 | 10.9 | 28.6 | 2094@50 | 31 |
| 5547535 | 275/35ZR20 | 102W | XL | 340 A A | 10 | BLK | 9.5 | 10.9 | 27.5 | 1874@50 | 30 |
| 5547536 | 275/45ZR20 | 110W | XL | 340 A A | 10 | BLK | 9 | 10.7 | 29.7 | 2337@50 | 33 |
| 5547537 | 245/50ZR20 | 102W | | 340 A A | 10 | BLK | 7.5 | 9.9 | 29.6 | 1874@44 | 31 |



ATREZZO SVA2

ULTRA-HIGH PERFORMANCE ALL-SEASON TIRE

Experience the road like never before with the Sailun Atrezzo SVA2 UHP AS tire, designed for ultimate performance and durability. Whether you're navigating through city traffic or embarking on a weekend road trip, these tires provide exceptional reliability and comfort. Sailun Atrezzo SVA2 tires demonstrate superior traction, handling and stability, ensuring trusted journey every time you are behind the wheel.



TRUSTED PERFORMANCE

Modern tread design with optimized void arrangement increases the number of groove edges, significantly enhancing wet grip and stability.



ENHANCED TRACTION

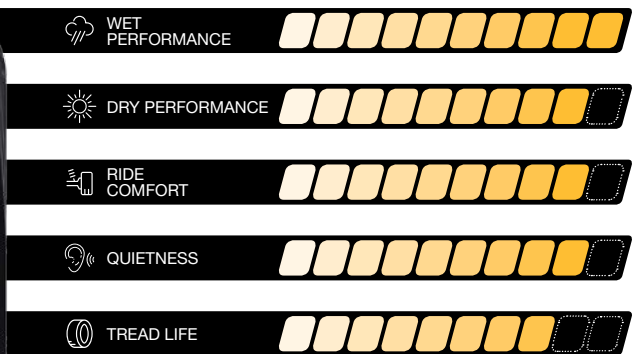
Optimized contact patch design evenly distributes ground pressure, enhancing traction and control.



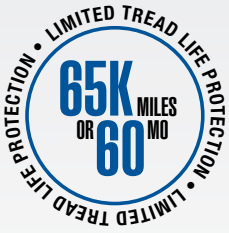
QUIET RIDE TECHNOLOGY

The innovative tread pattern, with additional tread blocks, minimizes noise and absorbs road impact, providing a quieter and more comfortable driving experience..

UTQG RATING
V, W AND Y RATED
600 A A



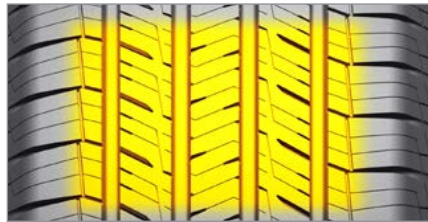
| ARTICLE NO. | TIRE SIZE | SERVICE DESC. | LOAD RANGE | UTQG | TREAD DEPTH (32ND) | SIDE WALL | RIM WIDTH | SECTION WIDTH | OVERALL DIAMETER | SINGLE MAX LOAD (LBS @ PSI) | SHIP WEIGHT (LBS) |
|-------------|-----------|---------------|------------|---------|--------------------|-----------|-----------|---------------|------------------|-----------------------------|-------------------|
| 1600745 | 205/45R16 | 87W | XL | 600 A A | 10 | BSW | 7.0 | 8.1 | 23.0 | 1201@50 | 18 |
| 1600764 | 205/50R16 | 87W | | 600 A A | 10 | BSW | 6.5 | 8.4 | 23.9 | 1201@44 | 20 |
| 1600779 | 205/55R16 | 91W | | 600 A A | 10 | BSW | 6.5 | 8.4 | 24.8 | 1356@44 | 21 |
| 1600761 | 215/55R16 | 97W | XL | 600 A A | 10 | BSW | 7.0 | 8.9 | 25.1 | 1609@50 | 23 |
| 1600765 | 205/45R17 | 88W | XL | 600 A A | 10 | BSW | 7.0 | 8.1 | 24.1 | 1235@50 | 19 |
| 1600778 | 205/50R17 | 93W | XL | 600 A A | 10 | BSW | 6.5 | 8.4 | 25.0 | 1433@50 | 21 |
| 1600780 | 215/45R17 | 91W | XL | 600 A A | 10 | BSW | 7.0 | 8.4 | 24.5 | 1356@50 | 21 |
| 1600771 | 215/50R17 | 91V | | 600 A A | 10 | BSW | 7.0 | 8.9 | 25.4 | 1356@44 | 23 |
| 1600748 | 215/55R17 | 98W | XL | 600 A A | 10 | BSW | 7.0 | 8.9 | 26.1 | 1653@50 | 24 |
| 1600755 | 225/45R17 | 91V | | 600 A A | 10 | BSW | 7.5 | 8.9 | 25.0 | 1356@44 | 23 |
| 1600753 | 225/55R17 | 101W | XL | 600 A A | 10 | BSW | 7.0 | 9.2 | 26.8 | 1819@50 | 26 |
| 1600735 | 235/50R17 | 100W | XL | 600 A A | 10 | BSW | 7.5 | 9.7 | 26.3 | 1764@50 | 26 |
| 1600730 | 235/55R17 | 103W | XL | 600 A A | 10 | BSW | 7.5 | 9.7 | 27.2 | 1929@50 | 27 |
| 1600768 | 245/40R17 | 95V | XL | 600 A A | 10 | BSW | 8.0 | 9.8 | 24.7 | 1521@50 | 23 |
| 1600744 | 245/45R17 | 99W | XL | 600 A A | 10 | BSW | 8.0 | 9.6 | 25.7 | 1709@50 | 26 |
| 1600756 | 225/50R17 | 98V | XL | 600 A A | 10 | BSW | 7.0 | 9.2 | 25.9 | 1653@50 | 25 |
| 1600766 | 235/45R17 | 97W | XL | 600 A A | 10 | BSW | 8.0 | 9.3 | 25.4 | 1609@50 | 24 |
| 1600760 | 215/45R18 | 93W | XL | 600 A A | 10 | BSW | 7.0 | 8.4 | 25.5 | 1433@50 | 22 |
| 1600749 | 225/40R18 | 92W | XL | 600 A A | 10 | BSW | 8.0 | 9.1 | 24.9 | 1389@50 | 21 |
| 1600747 | 225/45R18 | 95W | XL | 600 A A | 10 | BSW | 7.5 | 8.9 | 25.9 | 1521@50 | 23 |
| 1600752 | 225/50R18 | 99W | XL | 600 A A | 10 | BSW | 7.0 | 9.2 | 26.9 | 1709@50 | 26 |
| 1600757 | 225/55R18 | 102W | XL | 600 A A | 10 | BSW | 7.0 | 9.2 | 27.8 | 1874@50 | 27 |
| 1600734 | 235/45R18 | 98W | XL | 600 A A | 10 | BSW | 8.0 | 9.3 | 26.3 | 1653@50 | 25 |
| 1600742 | 235/50R18 | 97W | | 600 A A | 10 | BSW | 7.5 | 9.7 | 27.3 | 1609@44 | 27 |
| 1600736 | 235/55R18 | 104W | XL | 600 A A | 10 | BSW | 7.5 | 9.7 | 28.2 | 1984@50 | 29 |
| 1600731 | 245/45R18 | 100W | XL | 600 A A | 10 | BSW | 8.0 | 9.6 | 26.7 | 1764@50 | 27 |
| 1600741 | 245/40R18 | 97W | XL | 600 A A | 10 | BSW | 8.0 | 9.8 | 25.7 | 1609@50 | 25 |
| 1600733 | 235/40R18 | 95W | XL | 600 A A | 10 | BSW | 8.0 | 9.5 | 25.4 | 1521@50 | 24 |
| 1600774 | 255/35R18 | 90W | | 600 A A | 10 | BSW | 9.0 | 10.2 | 25.0 | 1323@44 | 25 |
| 1600783 | 245/55R18 | 107W | XL | 600 A A | 10 | BSW | 7.5 | 10.0 | 28.6 | 2149@50 | 30 |
| 1600750 | 225/40R19 | 93W | XL | 600 A A | 10 | BSW | 8.0 | 9.1 | 25.9 | 1433@50 | 24 |
| 1600751 | 225/45R19 | 92W | | 600 A A | 10 | BSW | 7.5 | 8.9 | 27.0 | 1389@44 | 26 |
| 1600772 | 225/55R19 | 103W | XL | 600 A A | 10 | BSW | 7.0 | 9.2 | 28.8 | 1929@50 | 28 |
| 1600773 | 235/35R19 | 91W | XL | 600 A A | 10 | BSW | 8.0 | 9.5 | 25.5 | 1356@50 | 24 |
| 1600758 | 235/40R19 | 92W | | 600 A A | 10 | BSW | 8.0 | 9.5 | 26.4 | 1389@44 | 25 |
| 1600762 | 235/50R19 | 103W | XL | 600 A A | 10 | BSW | 7.5 | 9.7 | 28.3 | 1929@50 | 29 |
| 1600737 | 235/55R19 | 105W | XL | 600 A A | 10 | BSW | 7.5 | 9.7 | 29.2 | 2039@50 | 30 |
| 1600763 | 245/35R19 | 93W | XL | 600 A A | 10 | BSW | 8.0 | 9.8 | 25.8 | 1433@50 | 25 |
| 1600743 | 245/40R19 | 98W | XL | 600 A A | 10 | BSW | 8.0 | 9.8 | 26.7 | 1653@50 | 26 |
| 1600732 | 245/50R19 | 101W | | 600 A A | 10 | BSW | 7.5 | 10.0 | 28.7 | 1819@44 | 30 |
| 1600739 | 275/40R19 | 101W | | 600 A A | 10 | BSW | 9.0 | 10.9 | 27.7 | 1819@44 | 31 |
| 1600775 | 255/35R19 | 96W | XL | 600 A A | 10 | BSW | 9.0 | 10.2 | 26.0 | 1565@50 | 26 |
| 1600740 | 255/40R19 | 100W | XL | 600 A A | 10 | BSW | 9.0 | 10.2 | 27.1 | 1764@50 | 28 |
| 1600777 | 255/45R19 | 104W | XL | 600 A A | 10 | BSW | 8.0 | 10.0 | 28.1 | 1984@50 | 29 |
| 1600770 | 245/45R19 | 102W | XL | 600 A A | 10 | BSW | 8.0 | 9.6 | 27.7 | 1874@50 | 28 |
| 1600767 | 235/55R20 | 102W | | 600 A A | 10 | BSW | 7.5 | 9.7 | 30.2 | 1874@44 | 31 |
| 1600759 | 245/35R20 | 95W | XL | 600 A A | 10 | BSW | 8.5 | 9.8 | 26.8 | 1521@50 | 27 |
| 1600769 | 245/40R20 | 99Y | XL | 600 A A | 10 | BSW | 8.5 | 9.8 | 27.7 | 1709@50 | 27 |
| 1600781 | 245/45R20 | 103Y | XL | 600 A A | 10 | BSW | 8.0 | 9.6 | 28.7 | 1929@50 | 30 |
| 1600782 | 275/40R20 | 106Y | XL | 600 A A | 10 | BSW | 9.5 | 10.9 | 28.7 | 2094@50 | 32 |
| 1600754 | 275/35R20 | 102Y | XL | 600 A A | 10 | BSW | 9.5 | 10.9 | 27.6 | 1874@50 | 30 |
| 1600746 | 255/45R20 | 105Y | XL | 600 A A | 10 | BSW | 8.5 | 10.0 | 29.1 | 2039@50 | 31 |
| 1600738 | 245/50R20 | 105W | XL | 600 A A | 10 | BSW | 7.5 | 10.0 | 29.7 | 2039@50 | 32 |
| 1600776 | 255/40R20 | 101Y | XL | 600 A A | 10 | BSW | 9.0 | 10.2 | 28.0 | 1819@50 | 29 |



ATREZZO TCON

ALL-SEASON SUV TIRE

The ATREZZO TCON is a premium SUV/CUV all-season tire. Introducing TCON (Total Control) technology that uses proprietary rubber compounds that are more robust to withstand the additional needs of today's SUV's. The ATREZZO TCON is engineered for SUV vehicles to deliver a quiet, confident driving experience.



TCON-TOTAL CONTROL TECHNOLOGY

Advanced polymer for gripping (SSBR: Solution Polymerized Styrene Butadiene Rubber) delivers outstanding traction on wet and dry roads, as well as shorten the braking distance

LARGE CONTACT AREA

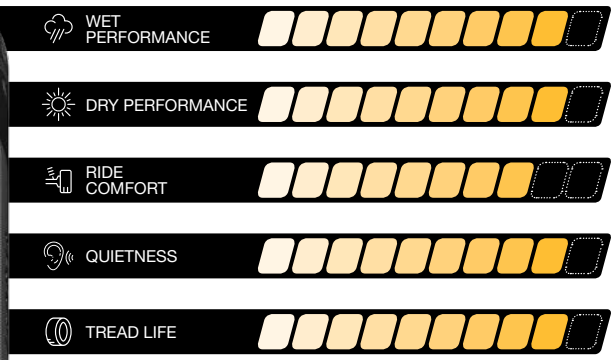
Wide tread surface evenly distributes ground pressure and improves tread wear.

HANDLING

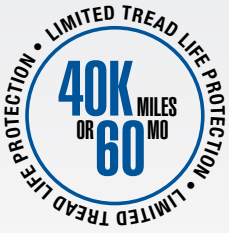
High tension cap ply with high rigidity bead enhances handling, cornering, and steering response.

UTQG RATING

P-METRIC = 700 A A



| ARTICLE NO. | TIRE SIZE | SERVICE DESC. | LOAD RANGE | UTQG | TREAD DEPTH (32ND) | SIDE WALL | RIM WIDTH | SECTION WIDTH | OVERALL DIAMETER | SINGLE MAX LOAD (LBS @ PSI) | SHIP WEIGHT (LBS) |
|-------------|-----------|---------------|------------|---------|--------------------|-----------|-----------|---------------|------------------|-----------------------------|-------------------|
| 1600307K | 205/70R16 | 97V | | 700 A A | 10 | BSW | 6.0 | 8.2 | 27.3 | 1609@44 | 26 |
| 1600295K | 215/65R16 | 98H | | 700 A A | 10 | BSW | 6.5 | 8.7 | 27.0 | 1653@44 | 24 |
| 1600296K | 215/70R16 | 100H | | 700 A A | 10 | BSW | 6.5 | 8.7 | 27.9 | 1764@44 | 29 |
| 1600285K | 225/70R16 | 103H | | 700 A A | 10 | BSW | 6.5 | 9.0 | 28.4 | 1929@44 | 30 |
| 1600297K | 235/60R16 | 100H | | 700 A A | 10 | BSW | 7.0 | 9.4 | 27.1 | 1764@44 | 30 |
| 1600286K | 235/70R16 | 106H | | 700 A A | 10 | BSW | 7.0 | 9.4 | 29.0 | 2094@44 | 31 |
| 1600298K | 215/60R17 | 96H | | 700 A A | 10 | BSW | 6.5 | 8.7 | 27.2 | 1565@44 | 27 |
| 1600394K | 225/55R17 | 97V | | 700 A A | 10 | BSW | 7.0 | 9.2 | 26.8 | 1609@44 | 26 |
| 1600299K | 225/60R17 | 99H | | 700 A A | 10 | BSW | 6.5 | 9.0 | 27.6 | 1709@44 | 29 |
| 1600300K | 225/65R17 | 102H | | 700 A A | 10 | BSW | 6.5 | 9.0 | 28.5 | 1874@44 | 28 |
| 1600301K | 235/55R17 | 99V | | 700 A A | 10 | BSW | 7.5 | 9.6 | 27.2 | 1709@44 | 29 |
| 1600302K | 235/60R17 | 102H | | 700 A A | 10 | BSW | 7.0 | 9.4 | 28.1 | 1874@44 | 30 |
| 1600303K | 235/65R17 | 104H | | 700 A A | 10 | BSW | 7.0 | 9.4 | 29.1 | 1984@44 | 32 |
| 1600304K | 245/65R17 | 107H | | 700 A A | 10 | BSW | 7.0 | 9.8 | 29.5 | 2149@44 | 33 |
| 1600305K | 265/65R17 | 112H | | 700 A A | 10 | BSW | 8.0 | 10.7 | 30.6 | 2469@44 | 38 |
| 1600263K | 265/70R17 | 115T | | 700 A A | 10 | BSW | 8.0 | 10.7 | 31.7 | 2679@44 | 38 |
| 1600395K | 215/55R18 | 95H | | 700 A A | 10 | BSW | 7.0 | 8.9 | 27.3 | 1521@44 | 26 |
| 1600265K | 225/55R18 | 98V | | 700 A A | 10 | BSW | 7.0 | 9.2 | 27.8 | 1653@44 | 27 |
| 1600266K | 225/60R18 | 100H | | 700 A A | 10 | BSW | 6.5 | 9.0 | 28.6 | 1764@44 | 29 |
| 1600293K | 235/50R18 | 97V | | 700 A A | 10 | BSW | 7.5 | 9.6 | 27.3 | 1609@44 | 28 |
| 1600282K | 235/55R18 | 100V | | 700 A A | 10 | BSW | 7.5 | 9.6 | 28.1 | 1764@44 | 29 |
| 1600284K | 235/60R18 | 107V | XL | 700 A A | 10 | BSW | 7.0 | 9.4 | 29.1 | 2149@50 | 30 |
| 1600270K | 235/65R18 | 106H | | 700 A A | 10 | BSW | 7.0 | 9.4 | 30.0 | 2094@44 | 32 |
| 1600393K | 245/60R18 | 105H | | 700 A A | 10 | BSW | 7.0 | 9.8 | 29.6 | 2039@44 | 31 |
| 1600271K | 255/55R18 | 109V | XL | 700 A A | 10 | BSW | 8.0 | 10.4 | 29.0 | 2271@50 | 32 |
| 1600272K | 255/65R18 | 111T | | 700 A A | 10 | BSW | 7.5 | 10.2 | 31.1 | 2403@44 | 37 |
| 1600273K | 265/60R18 | 110H | | 700 A A | 10 | BSW | 8.0 | 10.7 | 30.5 | 2337@44 | 34 |
| 1600287K | 265/65R18 | 114H | | 700 A A | 10 | BSW | 8.0 | 10.7 | 31.5 | 2601@44 | 39 |
| 1600288K | 275/65R18 | 116H | | 700 A A | 10 | BSW | 8.0 | 11.0 | 32.1 | 2756@44 | 39 |
| 1600274K | 225/55R19 | 99V | | 700 A A | 10 | BSW | 7.0 | 9.2 | 28.8 | 1709@44 | 29 |
| 1600267K | 235/45R19 | 95V | | 700 A A | 10 | BSW | 8.0 | 9.3 | 27.4 | 1521@44 | 27 |
| 1600268K | 235/50R19 | 103V | XL | 700 A A | 10 | BSW | 7.5 | 9.6 | 28.3 | 1929@50 | 30 |
| 1600275K | 235/55R19 | 105V | XL | 700 A A | 10 | BSW | 7.5 | 9.6 | 29.2 | 2039@50 | 30 |
| 1600276K | 245/55R19 | 103V | | 700 A A | 10 | BSW | 7.5 | 10.0 | 29.6 | 1929@44 | 32 |
| 1600277K | 255/50R19 | 107V | XL | 700 A A | 10 | BSW | 8.0 | 10.4 | 29.1 | 2149@50 | 32 |
| 1600306K | 255/55R19 | 111V | XL | 700 A A | 10 | BSW | 8.0 | 10.4 | 30.0 | 2403@50 | 34 |
| 1600289K | 255/60R19 | 109H | | 700 A A | 10 | BSW | 7.5 | 10.2 | 31.1 | 2271@44 | 35 |
| 1600278K | 235/55R20 | 105V | XL | 700 A A | 10 | BSW | 7.5 | 9.6 | 30.2 | 2039@50 | 31 |
| 1600279K | 245/50R20 | 102V | | 700 A A | 10 | BSW | 7.5 | 10.0 | 29.7 | 1874@44 | 33 |
| 1600290K | 245/60R20 | 107H | | 700 A A | 10 | BSW | 7.0 | 9.8 | 31.6 | 2149@44 | 35 |
| 1600291K | 255/50R20 | 109V | XL | 700 A A | 10 | BSW | 8.0 | 10.4 | 30.1 | 2271@50 | 34 |
| 1600280K | 255/55R20 | 110V | XL | 700 A A | 10 | BSW | 8.0 | 10.4 | 31.0 | 2337@50 | 36 |
| 1600281K | 275/40R20 | 106W | XL | 700 A A | 10 | BSW | 9.5 | 10.9 | 28.7 | 2094@50 | 33 |
| 1600292K | 275/55R20 | 117V | XL | 700 A A | 10 | BSW | 8.5 | 11.2 | 31.9 | 2833@50 | 38 |
| 1600294K | 275/60R20 | 116H | XL | 700 A A | 10 | BSW | 8.0 | 11.0 | 33.0 | 2756@50 | 39 |
| 1600269K | 265/40R21 | 105W | XL | 700 A A | 10 | BSW | 9.5 | 10.7 | 29.3 | 2039@50 | 33 |
| 1600283K | 285/45R22 | 114W | XL | 700 A A | 10 | BSW | 9.5 | 11.2 | 32.1 | 2601@50 | 39 |



ATREZZO SVR LX+

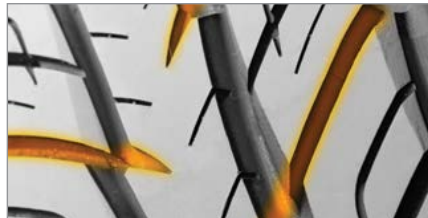
HIGH PERFORMANCE SUV TIRE

The SVR LX+ is a premium high-performance tire designed for SUVs, sport trucks, and crossover vehicles. A sporty design engineered with an advanced tread design, the SVR LX+ accentuates the appearance of your ride, while providing unparalleled all-season performance, comfort, and tread life. Perfect balance of style, luxury, and all-season performance for driving confidence in all weather conditions. Available in stylish 20"-24" sizes with M+S ratings for a wide range of OE and plus-size fitments.



DIRECTIONAL TREAD DESIGN

Aggressive directional tread design with large tread blocks provide responsiveness and improved handling.



SYMMETRIC V-SHAPED CHANNELS

Designed to provide excellent water evacuation for improved wet traction and reduced hydroplaning.



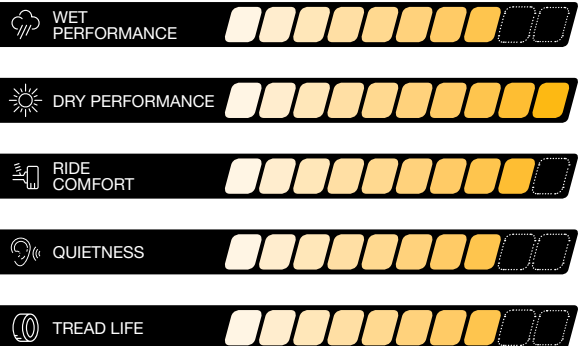
WIDE OPEN SHOULDER TREAD BLOCKS

Enhance high-speed cornering stability and handling.

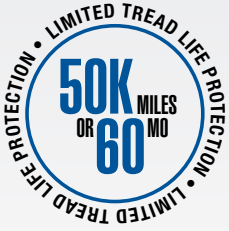
EXTRA LOAD CARRYING CAPACITY

Provides enhanced durability and strength under load.

| |
|-------------|
| UTQG RATING |
| V = 420 A A |
| W = 420 A A |



| ARTICLE NO. | TIRE SIZE | SERVICE DESC. | LOAD RANGE | UTQG | TREAD DEPTH (32ND) | SIDE WALL | RIM WIDTH | SECTION WIDTH | OVERALL DIAMETER | SINGLE MAX LOAD (LBS @ PSI) | SHIP WEIGHT (LBS) |
|-------------|-----------|---------------|------------|---------|--------------------|-----------|-----------|---------------|------------------|-----------------------------|-------------------|
| 5542824 | 255/45R20 | 105V | XL | 420 A A | 12 | BLK | 8.5 | 10.04 | 29.05 | 2039@50 | 31 |
| 5542823 | 275/60R20 | 119H | XL | 420 A A | 12 | BLK | 8.0 | 11.0 | 33.0 | 2998@50 | 42 |
| 5542821 | 275/55R20 | 117V | XL | 420 A A | 12 | BLK | 8.5 | 11.2 | 31.9 | 2833@50 | 42 |
| 5542826 | 265/50R20 | 111V | XL | 420 A A | 12 | BLK | 8.5 | 10.9 | 30.5 | 2403@50 | 38 |
| 5542822 | 285/50R20 | 116V | XL | 420 A A | 12 | BLK | 9.0 | 11.7 | 31.3 | 2756@50 | 41 |
| 5542820 | 305/50R20 | 120V | XL | 420 A A | 12 | BLK | 9.5 | 12.4 | 32.1 | 3086@50 | 46 |
| 5542817 | 275/45R20 | 110V | XL | 420 A A | 12 | BLK | 9.0 | 10.8 | 29.8 | 2337@50 | 38 |
| 5542813 | 275/40R20 | 106V | XL | 420 A A | 12 | BLK | 9.5 | 10.9 | 28.7 | 2094@50 | 35 |
| 5542818K | 295/45R20 | 114V | XL | 420 A A | 12 | BLK | 10.0 | 11.7 | 30.5 | 2601@50 | 38 |
| 5542819 | 305/45R22 | 118V | XL | 420 A A | 12 | BLK | 10.0 | 11.9 | 32.8 | 2910@50 | 46 |
| 5542825 | 265/40R22 | 106V | XL | 420 A A | 12 | BLK | 9.5 | 10.7 | 30.4 | 2094@50 | 36 |
| 5542816 | 305/40R22 | 114V | XL | 420 A A | 12 | BLK | 11.0 | 12.3 | 31.6 | 2601@50 | 44 |
| 5542810 | 265/35R22 | 102W | XL | 420 A A | 12 | BLK | 9.5 | 10.7 | 29.3 | 1874@50 | 35 |
| 5542815 | 235/30R22 | 90W | XL | 420 A A | 12 | BLK | 8.5 | 9.5 | 27.6 | 1323@50 | 25 |
| 5542814 | 245/30R22 | 92W | XL | 420 A A | 12 | BLK | 8.5 | 9.8 | 27.8 | 1389@50 | 26 |
| 5542809 | 255/30R22 | 95W | XL | 420 A A | 12 | BLK | 9 | 10.2 | 28 | 1521@50 | 29 |
| 5542811 | 295/35R24 | 110V | XL | 420 A A | 12 | BLK | 10.5 | 11.9 | 32.1 | 2337@50 | 41 |
| 5542812 | 305/35R24 | 112V | XL | 420 A A | 12 | BLK | 11.0 | 12.3 | 32.4 | 2469@50 | 44 |



TERRAMAX HLT

ALL-SEASON LIGHT TRUCK & SUV TIRE

The Terramax HLT is a premium highway all-season tire made with the SUV and LT driver in mind. Engineered to deliver a quiet and stable ride, the Terramax HLT features our specially formulated compound to provide long lasting tread life and traction in all-season conditions.



REDUCED ROAD NOISE

Tread pattern effectively reduces noise to create a quiet driving experience.

LARGE CONTACT AREA

Tread blocks increase the contact area, improving overall handling and tread wear.

WIDE CHANNEL GROOVES

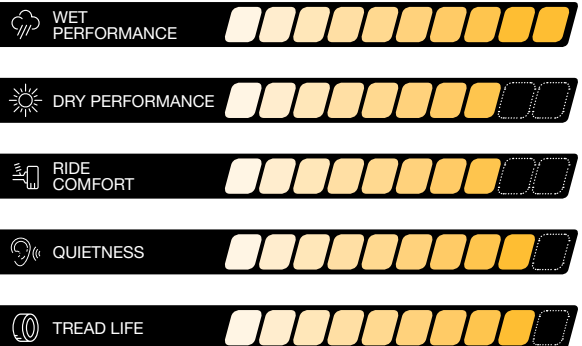
4 extra-wide grooves channel water to give you the traction you need to drive with confidence.

ENVIRONMENTALLY FRIENDLY PRODUCTION AND MATERIALS

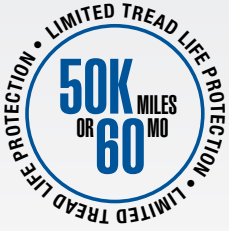
Specially formulated compound for improved wear characteristics using the latest in environmentally friendly processes and materials.

UTQG RATING

P-METRIC = 800 A A



| ARTICLE NO. | TIRE SIZE | SERVICE DESC. | LOAD RANGE | UTQG | TREAD DEPTH (32ND) | SIDE WALL | RIM WIDTH | SECTION WIDTH | OVERALL DIAMETER | SINGLE MAX LOAD (LBS @ PSI) | DUAL MAX LOAD (LBS @ PSI) | SHIP WEIGHT (LBS) |
|-------------|---------------|---------------|------------|---------|--------------------|-----------|-----------|---------------|------------------|-----------------------------|---------------------------|-------------------|
| 2001900* | 215/75R15 | 100S | SL | 500 A B | 11 | OWL | 6.0 | 8.5 | 27.7 | 1984@44 | - | 29 |
| 2001901* | 225/75R15 | 102S | SL | 500 A B | 11 | OWL | 6.0 | 8.8 | 28.3 | 1984@44 | - | 30 |
| 5542780 | 235/75R15 | 105T | SL | 600 A A | 11 | OWL | 6.5 | 9.3 | 28.9 | 2039@44 | - | 30 |
| 5542782 | 245/75R16 | 111T | SL | 600 A A | 11 | OWL | 7.0 | 9.8 | 30.5 | 2403@44 | - | 34 |
| 5542787 | 265/75R16 | 116T | SL | 600 A A | 11 | OWL | 7.5 | 10.5 | 31.7 | 2756@44 | - | 37 |
| 5543149 | 215/70R16 | 100H | SL | 600 A A | 11 | BSW | 6.5 | 8.7 | 27.9 | 1764@44 | - | 27 |
| 2000060* | 225/70R16 | 103T | SL | 500 A B | 11 | OWL | 6.5 | 12.9 | 28.4 | 1929@44 | - | 30 |
| 5542804 | 235/70R16 | 106T | SL | 600 A A | 11 | OWL | 7.0 | 9.5 | 29.0 | 2094@44 | - | 31 |
| 5542783 | 245/70R16 | 107T | SL | 600 A A | 11 | OWL | 7.0 | 9.8 | 29.5 | 2149@44 | - | 32 |
| 5542784 | 255/70R16 | 111T | SL | 600 A A | 11 | OWL | 7.5 | 10.2 | 30.1 | 2403@44 | - | 34 |
| 5542785 | 265/70R16 | 112T | SL | 600 A A | 11 | OWL | 8.0 | 10.7 | 30.6 | 2469@44 | - | 35 |
| 5544063 | 235/75R17 | 109T | SL | 600 A A | 11 | BSW | 6.5 | 9.3 | 30.9 | 2271@44 | - | 34 |
| 5542781 | 245/70R17 | 110T | SL | 600 A A | 11 | OWL | 7.0 | 9.8 | 30.6 | 2337@44 | - | 34 |
| 5542786 | 265/70R17 | 115T | SL | 600 A A | 11 | OWL | 8.0 | 10.7 | 31.7 | 2679@44 | - | 37 |
| 5543150 | 225/65R17 | 102H | SL | 600 A A | 11 | BSW | 6.5 | 9.0 | 28.5 | 1874@44 | - | 28 |
| 5542805 | 235/65R17 | 104T | SL | 600 A A | 11 | OWL | 7.0 | 9.5 | 29.1 | 1984@44 | - | 30 |
| 5542806 | 245/65R17 | 107T | SL | 600 A A | 11 | OWL | 7.0 | 9.8 | 29.5 | 2149@44 | - | 32 |
| 5543151 | 265/65R17 | 112S | SL | 600 A A | 11 | BSW | 8.0 | 10.7 | 30.6 | 2469@44 | - | 36 |
| 5544067 | 265/70R18 | 116T | SL | 600 A A | 11 | BSW | 8.0 | 10.7 | 32.6 | 2756@44 | - | 39 |
| 5543154 | 235/65R18 | 106H | SL | 600 A A | 11 | BSW | 7.0 | 9.5 | 30.0 | 2094@44 | - | 31 |
| 5543157 | 255/65R18 | 111S | SL | 600 A A | 11 | BSW | 7.5 | 10.2 | 31.1 | 2403@44 | - | 36 |
| 5542790 | 275/65R18 | 116T | SL | 600 A A | 11 | OWL | 8.0 | 11.0 | 32.1 | 2756@44 | - | 39 |
| 5543153 | 235/60R18 | 103H | SL | 600 A A | 11 | BSW | 7.0 | 9.5 | 29.1 | 1929@44 | - | 29 |
| 5543155 | 245/60R18 | 105H | SL | 600 A A | 11 | BSW | 7.0 | 9.8 | 29.6 | 2039@44 | - | 31 |
| 5543158 | 265/60R18 | 110H | SL | 600 A A | 11 | BSW | 8.0 | 10.7 | 30.5 | 2337@44 | - | 34 |
| 5543152 | 235/55R18 | 100V | SL | 600 A A | 11 | BSW | 7.5 | 9.7 | 28.2 | 1764@44 | - | 29 |
| 5543156 | 255/55R18 | 109V | XL | 600 A A | 11 | BSW | 8.0 | 10.4 | 29.0 | 2271@50 | - | 32 |
| 5544066 | 255/60R19 | 109H | SL | 600 A A | 11 | BSW | 7.5 | 10.2 | 31.1 | 2271@44 | - | 35 |
| 5544061 | 235/55R19 | 101H | SL | 600 A A | 11 | BSW | 7.5 | 9.7 | 29.2 | 1819@44 | - | 30 |
| 5544064 | 245/55R19 | 103S | SL | 600 A A | 11 | BSW | 7.5 | 10.0 | 29.7 | 1929@44 | - | 32 |
| 5544069 | 245/60R20 | 107H | SL | 600 A A | 11 | BSW | 7.0 | 9.8 | 31.6 | 2149@44 | - | 35 |
| 5542789 | 275/60R20 | 115T | SL | 600 A A | 11 | BSW | 8.0 | 11.0 | 33.0 | 2679@44 | - | 40 |
| 5544062 | 235/55R20 | 102H | SL | 600 A A | 11 | BSW | 7.5 | 9.7 | 30.2 | 1874@44 | - | 32 |
| 5544065 | 255/55R20 | 107H | SL | 600 A A | 11 | BSW | 8.0 | 10.4 | 31.0 | 2149@44 | - | 35 |
| 5542788 | 275/55R20 | 117T | XL | 600 A A | 11 | BSW | 8.5 | 11.2 | 31.9 | 2833@50 | - | 39 |
| 5544068 | 245/50R20 | 102H | SL | 600 A A | 11 | BSW | 7.5 | 10.0 | 29.7 | 1874@44 | - | 32 |
| 5544070 | 255/50R20 | 105H | SL | 600 A A | 11 | BSW | 8.0 | 10.4 | 30.1 | 2039@44 | - | 33 |
| 5544071 | 265/50R20 | 107H | SL | 600 A A | 11 | BSW | 8.5 | 10.9 | 30.5 | 2149@44 | - | 36 |
| 5546642 | 285/45R22 | 114H | XL | 600 A A | 11 | BSW | 9.5 | 11.2 | 32.1 | 2601@50 | - | 40 |
| 2001896* | LT235/75R15 | 104/101R | C | - | 14 | OWL | 6.5 | 9.3 | 28.9 | 1985@50 | 1820@50 | 38 |
| 5542791 | LT215/85R16 | 115/112R | E | - | 14 | BSW | 6.0 | 8.5 | 30.4 | 2680@80 | 2470@80 | 38 |
| 5542794 | LT235/85R16 | 120/116R | E | - | 14 | BSW | 6.5 | 9.3 | 31.7 | 3085@80 | 2755@80 | 41 |
| 5542792 | LT225/75R16 | 115/112R | E | - | 14 | BSW | 6.0 | 8.8 | 29.3 | 2680@80 | 2470@80 | 36 |
| 5542796 | LT245/75R16 | 120/116R | E | - | 14 | OWL | 7.0 | 9.8 | 30.5 | 3085@80 | 2755@80 | 42 |
| 5542800 | LT265/75R16 | 123/120S | E | - | 14 | OWL | 7.5 | 10.5 | 31.7 | 3415@80 | 3085@80 | 46 |
| 5542793 | LT235/80R17 | 120/117R | E | - | 14 | BSW | 6.5 | 9.3 | 31.8 | 3085@80 | 2835@80 | 42 |
| 5542797 | LT245/75R17 | 121/118S | E | - | 14 | OWL | 7.0 | 9.8 | 31.5 | 3195@80 | 2910@80 | 43 |
| 5542795 | LT245/70R17 | 119/116S | E | - | 14 | OWL | 7.0 | 9.8 | 30.6 | 3000@80 | 2755@80 | 42 |
| 5542798 | LT265/70R17 | 121/118S | E | - | 14 | OWL | 8.0 | 10.7 | 31.7 | 3195@80 | 2910@80 | 45 |
| 5542799 | LT265/70R18 | 124/121S | E | - | 14 | BSW | 8.0 | 10.7 | 32.6 | 3525@80 | 3195@80 | 48 |
| 5542803 | LT275/70R18 | 125/122S | E | - | 14 | OWL | 8.0 | 11.0 | 33.2 | 3640@80 | 3305@80 | 51 |
| 5542801 | LT275/65R18 | 123/120S | E | - | 14 | OWL | 8.0 | 11.0 | 32.1 | 3415@80 | 3085@80 | 49 |
| 5542802 | LT275/65R20 | 126/123S | E | - | 14 | BSW | 8.0 | 11.0 | 34.1 | 3750@80 | 3415@80 | 53 |
| 2000056* | 31X10.50R15LT | 109R | C | - | 14 | OWL | 8.5 | 10.5 | 30.5 | 2270@50 | - | 40 |



TERRAMAX AT2



ON/OFF ROAD LIGHT TRUCK & SUV TIRE

Terramax AT2 elevates your driving experience with superior traction on/off-road. Built with purpose for SUVs, pickup trucks, and vans. Aggressive open shoulder tread design, that is 3PMS certified expels water, snow, slush, mud for optimum traction. Center rib ensures superior ride stability and control. Deep tread sipes create additional tread surface and increase traction. Ensure your peace of mind with industry-leading warranty. Experience exceptional handling, stability, and a quiet ride with the Terramax AT2.



YEAR-ROUND ASSURANCE

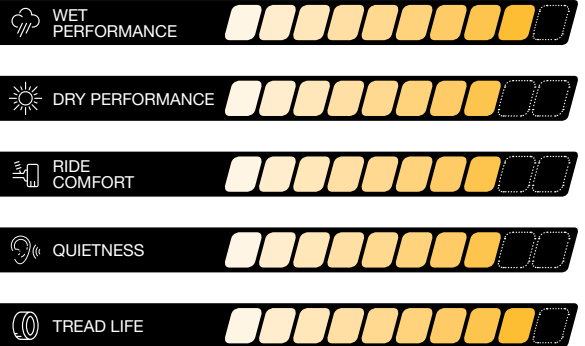
3 Peak Mountain Snowflake Certified (3PMS) guarantees premium top-tier performance in severe snow conditions.

ENHANCED CONTROL

The center rib ensures ride control and a stable drive.

DURABILITY

Protective sidewall biters provide extra traction and help prolong the tire's lifespan.



| ARTICLE NO. | TIRE SIZE | SERVICE DESC. | LOAD RANGE | UTQG | TREAD DEPTH (32ND) | SIDE WALL | RIM WIDTH | SECTION WIDTH | OVERALL DIAMETER | SINGLE MAX LOAD (LBS @ PSI) | DUAL MAX LOAD (LBS @ PSI) | SHIP WEIGHT (LBS) |
|-------------|---------------|---------------|------------|---------|--------------------|-----------|-----------|---------------|------------------|-----------------------------|---------------------------|-------------------|
| 1600612K | 235/75R15 | 109S | XL | 620 A B | 13 | BSW | 6.5 | 9.3 | 29 | 2271@50 | | 34 |
| 1600614K | 265/70R16 | 112T | | 620 A B | 13 | BSW | 8.0 | 10.7 | 31 | 2469@44 | | 41 |
| 1600615K | 235/70R16 | 106S | | 620 A B | 13 | BSW | 7.0 | 9.4 | 29 | 2094@44 | | 35 |
| 1600622K | 265/75R16 | 116S | | 620 A B | 13 | BSW | 7.5 | 10.5 | 32 | 2756@44 | | 42 |
| 1600630K | 245/75R16 | 111S | | 620 A B | 13 | BSW | 7.0 | 9.8 | 31 | 2403@44 | | 38 |
| 1600613K | 265/70R17 | 115S | | 620 A B | 13 | BSW | 8.0 | 10.7 | 32 | 2679@44 | | 43 |
| 1600621K | 235/65R17 | 104S | | 620 A B | 13 | BSW | 7.0 | 9.4 | 30 | 1984@44 | | 35 |
| 1600623K | 255/65R17 | 110T | | 620 A B | 13 | BSW | 7.5 | 10.2 | 31 | 2337@44 | | 39 |
| 1600627K | 265/65R17 | 112S | | 620 A B | 13 | BSW | 8.0 | 10.7 | 31 | 2469@44 | | 40 |
| 1600629K | 245/65R17 | 107S | | 620 A B | 13 | BSW | 7.0 | 9.8 | 30 | 2149@44 | | 38 |
| 1600631K | 245/70R17 | 110T | | 620 A B | 13 | BSW | 7.0 | 9.8 | 31 | 2337@44 | | 39 |
| 1600637K | 275/65R18 | 116T | | 620 A B | 13 | BSW | 8.0 | 11.0 | 33 | 2756@44 | | 47 |
| 1600645K | 265/65R18 | 114T | | 620 A B | 13 | BSW | 8.0 | 10.7 | 32 | 2601@44 | | 44 |
| 1600646K | 265/70R18 | 116T | | 620 A B | 13 | BSW | 8.0 | 10.7 | 33 | 2756@44 | | 45 |
| 1600654K | 265/60R18 | 114T | XL | 620 A B | 13 | BSW | 8.0 | 10.7 | 31 | 2601@50 | | 41 |
| 1600611K | 275/55R20 | 117T | XL | 620 A B | 13 | BSW | 8.5 | 11.2 | 32 | 2833@50 | | 45 |
| 1600634K | 265/50R20 | 111T | XL | 620 A B | 13 | BSW | 8.5 | 10.9 | 31 | 2403@50 | | 42 |
| 1600638K | 275/60R20 | 115T | | 620 A B | 13 | BSW | 8.0 | 11.0 | 33 | 2679@44 | | 50 |
| 1600635K | 285/45R22 | 114H | XL | 620 A B | 13 | BSW | 9.5 | 11.2 | 33 | 2601@50 | | 46 |
| 1600617K | LT225/75R16 | 115/112S | 10PR | | 16 | BSW | 6.0 | 8.8 | 30 | 2680@80 | 2470@80 | 41 |
| 1600618K | LT235/85R16 | 120/116S | 10PR | | 16 | BSW | 6.5 | 9.3 | 32 | 3042@80 | 2778@80 | 46 |
| 1600619K | LT265/75R16 | 123/120S | 10PR | | 16 | BSW | 7.5 | 10.5 | 32 | 3415@80 | 3085@80 | 49 |
| 1600620K | LT245/75R16 | 120/116S | 10PR | | 16 | BSW | 7.0 | 9.8 | 31 | 3042@80 | 2778@80 | 46 |
| 1600624K | LT265/70R17 | 123/120S | 10PR | | 16 | BSW | 8.0 | 10.7 | 32 | 3415@80 | 3085@80 | 51 |
| 1600625K | LT245/70R17 | 119/116S | 10PR | | 16 | BSW | 7.0 | 9.8 | 31 | 3000@80 | 2755@80 | 45 |
| 1600626K | LT235/80R17 | 120/117R | 10PR | | 16 | BSW | 6.5 | 9.3 | 32 | 3085@80 | 2835@80 | 47 |
| 1600628K | LT245/75R17 | 121/118S | 10PR | | 16 | BSW | 7.0 | 9.8 | 32 | 3195@80 | 2910@80 | 47 |
| 1600632K | LT285/70R17 | 126/123S | 10PR | | 16 | BSW | 8.5 | 11.5 | 33 | 3750@80 | 3415@80 | 55 |
| 1600633K | LT315/70R17 | 126/123S | 10PR | | 16 | BSW | 9.5 | 12.7 | 35 | 3750@65 | 3415@65 | 63 |
| 1600644K | LT275/65R18 | 123/120R | 10PR | | 16 | BSW | 8.0 | 11.0 | 33 | 3415@80 | 3085@80 | 54 |
| 1600647K | LT275/70R18 | 125/122R | 10PR | | 16 | BSW | 8.0 | 11.0 | 34 | 3640@80 | 3305@80 | 55 |
| 1600648K | LT265/70R18 | 124/121S | 10PR | | 16 | BSW | 8.0 | 10.7 | 33 | 3525@80 | 3195@80 | 53 |
| 1600636K | LT275/65R20 | 126/123R | 10PR | | 16 | BSW | 8.0 | 11.0 | 35 | 3750@80 | 3415@80 | 56 |
| 1600649K | LT275/60R20 | 123/120R | 10PR | | 16 | BSW | 8.0 | 11.0 | 33 | 3415@80 | 3085@80 | 56 |
| 1600650K | LT265/60R20 | 121/118R | 10PR | | 16 | BSW | 8.0 | 10.7 | 33 | 3195@80 | 2910@80 | 53 |
| 1600651K | LT305/55R20 | 121/118R | 10PR | | 16 | BSW | 9.5 | 12.4 | 34 | 3195@65 | 2910@65 | 61 |
| 1600652K | LT275/55R20 | 120/117R | 10PR | | 16 | BSW | 8.5 | 11.2 | 32 | 3085@80 | 2835@80 | 54 |
| 1600653K | LT285/60R20 | 125/122R | 10PR | | 16 | BSW | 8.5 | 11.5 | 34 | 3640@80 | 3305@80 | 58 |
| 1600616K | 31X10.50R15LT | 109S | 6PR | | 16 | BSW | 8.5 | 10.6 | 31 | 2270@50 | | 44 |
| 1600642K | 35X12.50R17LT | 125R | 10PR | | 16 | BSW | 10.0 | 12.5 | 35 | 3640@65 | | 63 |
| 1600639K | 33X12.50R18LT | 118S | 10PR | | 16 | BSW | 10.0 | 12.5 | 33 | 2910@65 | | 60 |
| 1600640K | 35X12.50R18LT | 123R | 10PR | | 16 | BSW | 10.0 | 12.5 | 35 | 3415@65 | | 64 |
| 1600641K | 33X12.50R20LT | 114S | 10PR | | 16 | BSW | 10.0 | 12.5 | 33 | 2600@65 | | 62 |
| 1600643K | 35X12.50R20LT | 121R | 10PR | | 16 | BSW | 10.0 | 12.5 | 35 | 3195@65 | | 64 |



TERRAMAX A/T 4S

ON/OFF ROAD LIGHT TRUCK & SUV TIRE

The Terramax A/T 4S is one of the first tires in the value tier to be approved for severe snow conditions and designated with the 3PMS Mountain/Snowflake symbol. Designed to deliver superior traction for SUVs, pickups and vans both on and off the road. The Terramax A/T 4S provides exceptional handling and on- and off-road stability, while maintaining a comfortable ride.

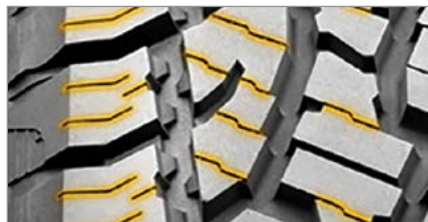


A TRUE YEAR ROUND TIRE

3 Peak Mountain Snowflake Certified (3PMS) for severe snow performance.

AGGRESSIVE TREAD DESIGN

Jagged edge tread blocks improve grip on ice and in the mud, providing superior traction. Zig zag grooves and continuous center block provide outstanding grip and superior handling.



STABILITY AND TRACTION IN ALL CONDITIONS

Aggressive, open shoulder design increases stability and traction in all weather conditions. Trapezoidal claw design on the shoulder edge increases traction in snow and mud, dissipates heat and enhances durability.



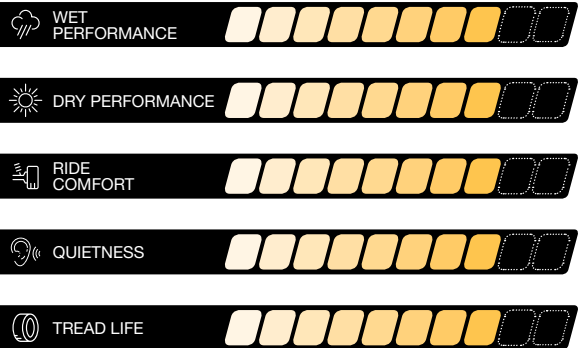
STONE EJECTORS

Stone ejectors withstand harsh road conditions.

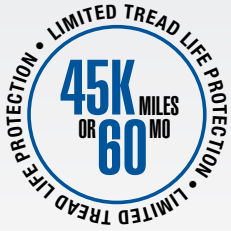


UTQG RATING

P-METRIC = 500 A B



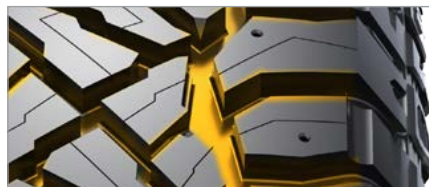
| ARTICLE NO. | TIRE SIZE | SERVICE DESC. | LOAD RANGE | UTQG | TREAD DEPTH (32ND) | SIDE WALL | RIM WIDTH | SECTION WIDTH | OVERALL DIAMETER | SINGLE MAX LOAD (LBS @ PSI) | DUAL MAX LOAD (LBS @ PSI) | SHIP WEIGHT (LBS) |
|-------------|---------------|---------------|------------|---------|--------------------|-----------|-----------|---------------|------------------|-----------------------------|---------------------------|-------------------|
| 5549252 | 235/75R15 | 109S | XL | 500 A B | 13 | OWL | 6.5 | 9.3 | 28.9 | 2271@50 | | 31 |
| 5546595 | 245/70R16 | 106T | | | 16 | OWL | 8.5 | 10.6 | 30.5 | 2094@44 | | 33 |
| 5546596 | 245/70R17 | 108T | | 500 A B | 13 | BSW | 7.0 | 9.8 | 29.5 | 2205@44 | | 34 |
| 5546597 | 255/70R16 | 109T | | 500 A B | 13 | BSW | 7.0 | 9.8 | 30.6 | 2271@44 | | 34 |
| 5546598 | 255/70R17 | 110T | | 500 A B | 13 | BSW | 7.5 | 10.2 | 30.1 | 2337@44 | | 36 |
| 5549254 | 245/75R16 | 111S | SL | 500 A B | 13 | OWL | 7.0 | 9.8 | 30.5 | 2403@44 | | 34 |
| 5549258 | 265/75R16 | 116S | SL | 500 A B | 13 | OWL | 7.5 | 10.5 | 31.7 | 2756@44 | | 38 |
| 5549251 | 235/70R16 | 106S | SL | 500 A B | 13 | OWL | 7.0 | 9.5 | 29.0 | 2094@44 | | 31 |
| 5549256 | 265/70R16 | 112T | SL | 500 A B | 13 | OWL | 8.0 | 10.7 | 30.6 | 2469@44 | | 36 |
| 5549257 | 265/70R17 | 115S | SL | 500 A B | 13 | OWL | 8.0 | 10.7 | 31.7 | 2679@44 | | 38 |
| 5549253 | 245/65R17 | 107S | SL | 500 A B | 13 | OWL | 7.0 | 9.8 | 29.5 | 2149@44 | | 33 |
| 5549255 | 265/65R17 | 112S | SL | 500 A B | 13 | OWL | 8.0 | 10.7 | 30.6 | 2469@44 | | 37 |
| 9630425 | 265/65R18 | 114S | | 500 A B | 13 | BSW | 8.0 | 10.7 | 31.5 | 2601@44 | | 40 |
| 5549261 | 275/65R18 | 116T | SL | 500 A B | 13 | OWL | 8.0 | 11.0 | 32.1 | 2750@44 | | 40 |
| 5549260 | 275/60R20 | 115T | SL | 500 A B | 13 | BSW | 8.0 | 11.0 | 33.0 | 2679@44 | | 42 |
| 5549259 | 275/55R20 | 117T | XL | 500 A B | 13 | BSW | 8.5 | 11.2 | 31.9 | 2833@50 | | 40 |
| 5549265 | LT235/85R16 | 120/116S | E | - | 16 | BSW | 6.5 | 9.3 | 31.7 | 3042@80 | 2778@80 | 42 |
| 5549263 | LT225/75R16 | 115/112S | E | - | 16 | BSW | 6.0 | 8.8 | 29.3 | 2680@80 | 2470@80 | 37 |
| 5549267 | LT245/75R16 | 120/116S | E | - | 16 | BSW | 7.0 | 9.8 | 30.5 | 3042@80 | 2778@80 | 42 |
| 5549271 | LT265/75R16 | 123/120S | E | - | 16 | OWL | 7.5 | 10.5 | 31.7 | 3415@80 | 3085@80 | 46 |
| 5549278 | LT285/75R16 | 126/123S | E | - | 16 | OWL | 8.0 | 11.3 | 32.8 | 3750@80 | 3415@80 | 51 |
| 5549264 | LT235/80R17 | 120/117R | E | - | 16 | OWL | 6.5 | 9.3 | 31.8 | 3085@80 | 2835@80 | 43 |
| 5549268 | LT245/75R17 | 121/118S | E | - | 16 | OWL | 7.0 | 9.8 | 31.5 | 3195@80 | 2910@80 | 44 |
| 5549266 | LT245/70R17 | 119/116S | E | - | 16 | OWL | 7.0 | 9.8 | 30.6 | 3000@80 | 2755@80 | 42 |
| 5549269 | LT265/70R17 | 121/118S | E | - | 16 | OWL | 8.0 | 10.7 | 31.7 | 3195@80 | 2910@80 | 46 |
| 5549276 | LT285/70R17 | 121/118S | E | - | 16 | OWL | 8.5 | 11.5 | 32.8 | 3195@80 | 2910@80 | 51 |
| 5549270 | LT265/70R18 | 124/121R | E | - | 16 | BSW | 8.0 | 10.7 | 32.6 | 3525@80 | 3195@80 | 49 |
| 5549274 | LT275/70R18 | 125/122R | E | - | 16 | OWL | 8.0 | 11.0 | 33.2 | 3640@80 | 3305@80 | 52 |
| 5549272 | LT275/65R18 | 123/120S | E | - | 16 | OWL | 8.0 | 11.0 | 32.1 | 3415@80 | 3085@80 | 49 |
| 5549273 | LT275/65R20 | 126/123S | E | - | 16 | BSW | 8.0 | 11.0 | 34.1 | 3750@80 | 3415@80 | 52 |
| 5546599 | LT275/55R20 | 120/117R | 10PR | - | 13 | BSW | 7.5 | 10.2 | 31.1 | 3085@80 | 2835@80 | 50 |
| 5546600 | LT275/60R20 | 123/120R | 10PR | - | 16 | BSW | 7.5 | 11.2 | 31.9 | 3415@80 | 3085@80 | 51 |
| 5546601 | LT305/55R20 | 121/118R | 10PR | - | 16 | BSW | 8.0 | 11.0 | 33.0 | 3195@65 | 2910@65 | 56 |
| 5546602 | LT305/65R18 | 124/121R | 10PR | - | 16 | BSW | 9.5 | 12.4 | 33.2 | 3525@65 | 3195@65 | 58 |
| 5546603 | LT325/60R20 | 126/123R | 10PR | - | 16 | BSW | 9.0 | 12.2 | 33.6 | 3750@65 | 3415@65 | 63 |
| 5546604 | LT325/65R18 | 127/124R | 10PR | - | 16 | BSW | 9.5 | 13.0 | 35.4 | 3860@65 | 3525@65 | 62 |
| 5549262 | 31x10.50R15LT | 109S | C | - | 16 | OWL | 8.5 | 10.6 | 30.5 | 2270@50 | | 41 |



TERRAMAX RT

ON/OFF ROAD LIGHT TRUCK & SUV - RUGGED TERRAIN

The Terramax RT (rugged terrain) is an aggressive, 3PMS certified RT tire. The Terramax RT features ample tread depth and provides excellent road manners for daily driving. Available in 39 sizes, from 17 to 22 inch rim diameters with flotation sizes available in 33,35 and 37 inches. The Terramax RT will enhance your vehicles appearance and no matter where you take it, on or off-road, the options are endless where you decide to go.



EVERY DAY, EVERY MONTH, ALL YEAR

3 Peak Mountain Snowflake Certified (3PMS) for severe snow performance. LT sizes are also pinned for studs. 3D multi-wave siping adds traction on winter roads.

LEGITIMATE PERFORMER

ON/OFF THE ROAD

Deep tread depth. Tread extending onto sidewall create a desired appearance and provide real world function with extra traction and protection when the environment demands it.

OPTIMIZED TREAD DESIGN

Squared profile and staggered scalloped shoulder lugs with stone ejectors maximize traction while continuously removing debris in the voids. Center tread block design ensures vehicle stability. In addition, Finite Element Analysis promotes ride comfort with reduced road noise for a RT tire.



| ARTICLE NO. | TIRE SIZE | RIM SIZE | SERVICE DESC. | L.R. | UTGQ | TREAD DEPTH (32ND) | SIDE WALL | RIM WIDTH | SECTION WIDTH | OVERALL DIAMETER | SINGLE MAX LOAD (LBS @ PSI) | DUAL MAX LOAD (LBS @ PSI) | SHIP WEIGHT (LBS) |
|-------------|---------------|----------|---------------|------|---------|--------------------|-----------|-----------|---------------|------------------|-----------------------------|---------------------------|-------------------|
| 1600135K | 265/70R17 | 17 | 115 | SL | 600 A B | 16 | BSW | 8 | 10.7 | 31.7 | 2679@44 | - | 43 |
| 1600143K | 255/70R18 | 18 | 116 | XL | 600 A B | 16 | BSW | 8 | 10.2 | 32.1 | 2756@50 | - | 43 |
| 1600147K | 265/60R18 | 18 | 114S | XL | 600 A B | 16 | BSW | 8 | 10.7 | 30.5 | 2601@50 | - | 41 |
| 1600149K | 265/70R18 | 18 | 116S | SL | 600 A B | 16 | BSW | 8 | 10.7 | 32.6 | 2756@44 | - | 45 |
| 1600150K | 275/65R18 | 18 | 116T | XL | 600 A B | 16 | BSW | 8 | 11.0 | 32.1 | 2756@50 | - | 42 |
| 1600190K | 265/65R18 | 18 | 116T | XL | 600 A B | 16 | BSW | 8 | 10.7 | 31.5 | 2756@50 | - | 44 |
| 1600189K | 275/55R20 | 20 | 117T | XL | 600 A B | 16 | BSW | 9 | 11.2 | 31.9 | 2833@50 | - | 47 |
| 1600159K | 265/50R20 | 20 | 111T | XL | 600 A B | 16 | BSW | 9 | 10.9 | 30.5 | 2403@50 | - | 43 |
| 1600161K | 275/60R20 | 20 | 116T | XL | 600 A B | 16 | BSW | 8 | 11.0 | 33.0 | 2756@50 | - | 48 |
| 1600177K | 285/55R20 | 20 | 119Q | XL | 600 A B | 14 | RWL | 9 | 11.7 | 32.36 | 2998@50 | - | 48 |
| 1600170K | 285/45R22 | 22 | 114Q | XL | 600 A B | 16 | BSW | 10 | 11.2 | 32.1 | 2601@50 | - | 46 |
| 1600137K | LT245/70R17 | 17 | 119/116Q | 10PR | | 18 | BSW | 7 | 9.8 | 30.6 | 3000@80 | 2755@80 | 46 |
| 1600138K | LT245/75R17 | 17 | 121/118Q | 10PR | | 18 | BSW | 7 | 9.8 | 31.7 | 3195@80 | 2910@80 | 47 |
| 1600139K | LT265/70R17 | 17 | 123/120Q | 10PR | | 18 | BSW | 8 | 10.7 | 31.7 | 3415@80 | 3085@80 | 52 |
| 1600141K | LT285/70R17 | 17 | 126/123Q | 10PR | | 18 | BSW | 9 | 11.5 | 32.8 | 3750@80 | 3415@80 | 57 |
| 1600151K | LT265/65R18 | 18 | 122/119Q | 10PR | | 18 | BSW | 8 | 10.7 | 31.5 | 3305@80 | 3000@80 | 52 |
| 1600152K | LT265/70R18 | 18 | 124/121Q | 10PR | | 18 | BSW | 8 | 10.7 | 32.6 | 3525@80 | 3195@80 | 54 |
| 1600153K | LT275/65R18 | 18 | 123/120Q | 10PR | | 18 | BSW | 8 | 11.0 | 32.1 | 3415@80 | 3085@80 | 54 |
| 1600155K | LT275/70R18 | 18 | 125/122Q | 10PR | | 18 | BSW | 8 | 11.0 | 33.2 | 3640@80 | 3305@80 | 55 |
| 5548704K | LT305/65R18 | 18 | 128/125 R | 12PR | | 18 | BSW | 9 | 12.2 | 33.6 | 3970@80 | 3640@80 | 63 |
| 1600398K | LT285/60R20 | 20 | 125/122 S | 10PR | | 18 | BSW | 8 | 11.5 | 33.5 | 3640@80 | 3305@80 | 59 |
| 1600162K | LT275/55R20 | 20 | 120/117Q | 10PR | | 18 | BSW | 9 | 11.2 | 31.9 | 3085@80 | 2835@80 | 54 |
| 1600164K | LT275/60R20 | 20 | 123/120Q | 10PR | | 18 | BSW | 8 | 11.0 | 33.0 | 3415@80 | 3085@80 | 56 |
| 1600165K | LT275/65R20 | 20 | 126/123Q | 10PR | | 18 | BSW | 8 | 11.0 | 34.1 | 3750@80 | 3415@80 | 60 |
| 1600166K | LT305/55R20 | 20 | 125/122Q | 12PR | | 18 | BSW | 10 | 12.4 | 33.2 | 3640@80 | 3305@80 | 63 |
| 1600144K | 33x12.50R17LT | 17 | 120Q | 10PR | | 18 | BSW | 10 | 12.5 | 32.8 | 3085@65 | | 61 |
| 1600145K | 35x12.50R17LT | 17 | 125Q | 10PR | | 18 | BSW | 10 | 12.5 | 34.8 | 3640@65 | | 65 |
| 1600146K | 37x12.50R17LT | 17 | 124Q | 8PR | | 18 | BSW | 10 | 12.5 | 36.5 | 3525@50 | | 67 |
| 1600157K | 33x12.50R18LT | 18 | 122Q | 12PR | | 18 | BSW | 10 | 12.5 | 32.8 | 3305@80 | | 62 |
| 1600158K | 35x12.50R18LT | 18 | 128Q | 12PR | | 18 | BSW | 10 | 12.5 | 34.8 | 3970@80 | | 67 |
| 1600192K | 37x12.50R18LT | 18 | 128Q | 10PR | | 18 | BSW | 10 | 12.5 | 36.5 | 3970@65 | | 67 |
| 1600167K | 33x12.50R20LT | 20 | 119Q | 12PR | | 18 | BSW | 10 | 12.5 | 32.8 | 3000@80 | | 63 |
| 1600168K | 35x12.50R20LT | 20 | 125Q | 12PR | | 18 | BSW | 10 | 12.5 | 34.8 | 3640@80 | | 66 |
| 1600169K | 37x12.50R20LT | 20 | 126Q | 10PR | | 18 | BSW | 10 | 12.5 | 36.5 | 3750@65 | | 71 |
| 1600194K | 35x13.50R20LT | 20 | 126Q | 12PR | | 18 | BSW | 10 | 13.5 | 34.8 | 3750@80 | | 71 |
| 1600171K | 33x12.50R22LT | 22 | 114Q | 12PR | | 18 | BSW | 10 | 12.5 | 32.5 | 2600@80 | | 63 |
| 1600172K | 35x12.50R22LT | 22 | 121Q | 12PR | | 18 | BSW | 10 | 12.5 | 34.5 | 3195@80 | | 67 |
| 1600195K | 37x12.50R22LT | 22 | 127Q | 12PR | | 18 | BSW | 10 | 12.5 | 36.5 | 3860@80 | | 71 |
| 1600173K | 37x13.50R22LT | 22 | 128Q | 12PR | | 18 | BSW | 11 | 13.6 | 36.5 | 3970@80 | | 76 |

TERRAMAX HLT-C

ALL-SEASON COMMERCIAL LIGHT TRUCK TIRE

The HLT C-Type is based on the proven Terramax HLT. Slight alteration to the existing HLT, that tightens the tread pattern to maximize weight carrying capabilities. Engineered for commercial delivery and demanding regional applications. Enhanced casing and bead package.



REDUCED ROAD NOISE

Tread pattern effectively reduces noise to create a quiet driving experience.

LARGE CONTACT AREA

Tread blocks increase the contact area, improving overall handling and tread wear.

WIDE CHANNEL GROOVES

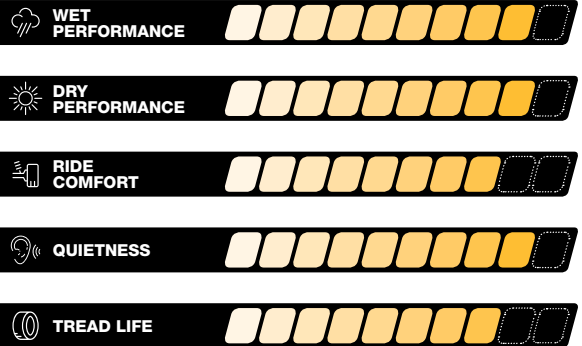
4 extra-wide grooves channel water to give you the traction you need to drive with confidence.

ENVIRONMENTALLY FRIENDLY PRODUCTION AND MATERIALS

Specially formulated compound for improved wear characteristics using the latest in environmentally friendly processes and materials.

UTQG RATING

P-METRIC = 500 A A



| ARTICLE NO. | TIRE SIZE | SERVICE DESC. | LOAD RANGE | UTQG | TREAD DEPTH (32ND) | SIDE WALL | RIM WIDTH | SECTION WIDTH | OVERALL DIAMETER | SINGLE MAX LOAD (LBS @ PSI) | DUAL MAX LOAD (LBS @ PSI) | SHIP WEIGHT (LBS) |
|-------------|-------------|---------------|------------|---------|--------------------|-----------|-----------|---------------|------------------|-----------------------------|---------------------------|-------------------|
| 5548248 | 185/60R15 C | 94/92T | C | - | 13 | BSW | 5.5 | 7.4 | 23.7 | 1477 @ 54 | 1389 @ 54 | 23 |
| 5548249 | 195/70R15 C | 104/102R | D | - | 13 | BSW | 6.0 | 7.9 | 25.8 | 1984 @ 65 | 1874 @ 65 | 25 |
| 5548250 | 205/65R15 C | 102/100T | C | - | 13 | BSW | 6.0 | 8.2 | 25.5 | 1874 @ 54 | 1764 @ 54 | 27 |
| 5548253 | 195/75R16 C | 107/105R | D | - | 13 | BSW | 5.5 | 7.7 | 27.5 | 2149 @ 69 | 2039 @ 69 | 28 |
| 5548252 | 215/55R16 | 97T XL | XL | 500 A A | 11 | BSW | 7.0 | 8.9 | 25.3 | 1609 @ 50 | - | 23 |
| 5548251 | 225/75R16 C | 121/120R | E | - | 13 | BSW | 6.0 | 8.8 | 29.3 | 3197 @ 83 | 3086 @ 83 | 34 |
| 5546501 | 235/65R16 C | 121/119R | E | - | 13 | BSW | 7.0 | 9.5 | 28.0 | 3197 @ 83 | 2998 @ 83 | 36 |



ERANGE | EV

ELECTRIC VEHICLE ALL-SEASON TIRE

ERANGE EV tires are designed and dedicated to help get the best performance out of your electric vehicle to help increase overall range on a single charge. ERANGE tires use proprietary Sailun EcoPoint3 liquid phase mixing technology to not only improve the EV driving experience, but also last longer, perform better, filter out road noise and reduce rolling resistance to avoid 'range anxiety' - with ERANGE, you're in charge. With over 37 sizes in 15-22", the ERANGE provides a wide range of market coverage in the electric vehicle segment.



INCREASED LOAD-BEARING CAPACITY

ERANGE EV tires feature increased load-bearing capacity to account for the extra weight of vehicle batteries while also utilizing a reinforced sidewall design for crisp handling and cornering compared to traditional tires.

LONG-LASTING TIRE LIFE

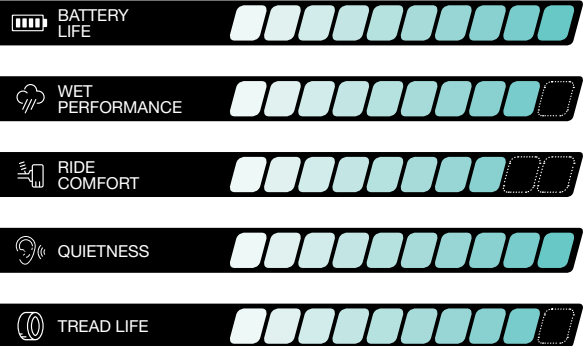
Manufactured with liquid phase mixing EcoPoint3 technology to deliver the right balance of long-lasting tire life without sacrificing grip or traction on various wet and dry road surfaces.

QUIET, COMFORT AND SAFE RIDE

ERANGE EV tires use proven 'SilentTread™' technology and a variable pitch sequence for a quiet, comfortable, and safe ride backed by proven lab and road testing to meet the highest of standards.

ADVANCED TREAD PATTERNS AND COMPOUNDS

Built with advanced tread patterns and specially formulated rubber compounds to handle the instant torque of electric vehicles and deliver dynamic driving performance in various road conditions



*half mileage warranty for rear if different size than front

SAILUN ERANGE | EV

| ARTICLE NO. | TIRE SIZE | SERVICE DESC. | LOAD RANGE | UTQG | TREAD DEPTH (32ND) | SIDE WALL | RIM WIDTH | SECTION WIDTH | OVERALL DIAMETER | SINGLE MAX LOAD (LBS @ PSI) | SHIP WEIGHT (LBS) |
|-------------|-----------|---------------|------------|---------|--------------------|-----------|-----------|---------------|------------------|-----------------------------|-------------------|
| 9630801 | 185/65R15 | 92T | XL | 600 A A | 9 | BSW | 5.5 | 7.4 | 24.4 | 1389@50 | 17 |
| 9630797 | 195/65R15 | 95H | XL | 600 A A | 9 | BSW | 6.0 | 7.9 | 25.0 | 1521@50 | 19 |
| 9630802 | 205/55R16 | 94H | XL | 600 A A | 9 | BSW | 6.5 | 8.4 | 24.9 | 1477@50 | 20 |
| 9630803 | 205/60R16 | 96H | XL | 600 A A | 9 | BSW | 6.0 | 8.2 | 25.7 | 1565@50 | 21 |
| 9630798 | 215/45R17 | 91V | XL | 600 A A | 9 | BSW | 7.0 | 8.4 | 24.6 | 1356@50 | 21 |
| 9630799 | 215/50R17 | 95V | XL | 600 A A | 9 | BSW | 7.0 | 8.9 | 25.5 | 1521@50 | 22 |
| 9630800 | 215/55R17 | 98V | XL | 600 A A | 9 | BSW | 7.0 | 8.9 | 26.3 | 1653@50 | 24 |
| 9630804 | 225/55R17 | 101V | XL | 600 A A | 9 | BSW | | 9.2 | 26.8 | 1819@50 | 26 |
| 9630805 | 225/50R17 | 98V | XL | 600 A A | 9 | BSW | 7.0 | 9.2 | 25.9 | 1653@50 | 25 |
| 9630806 | 225/65R17 | 106V | XL | 600 A A | 10 | BSW | 6.5 | 9.0 | 28.5 | 2094@50 | 26 |
| 9630910 | 235/45R18 | 98W | XL | 600 A A | 9 | BSW | 8.0 | 9.3 | 26.3 | 1653@50 | 24 |
| 9630809 | 235/55R18 | 104Y | XL | 600 A A | 9 | BSW | 7.5 | 9.6 | 28.1 | 1984@50 | 28 |
| 4120940 | 225/60R18 | 104v | XL | 600 A A | 9 | BSW | 6.0 | 9.37 | 28.50 | 1984@50 | 28 |
| 9630811 | 235/65R18 | 110V | XL | 600 A A | 10 | BSW | 7.0 | 9.4 | 30.0 | 2337@50 | 30 |
| 9630812 | 245/60R18 | 109H | XL | 600 A A | 10 | BSW | 7.0 | 9.8 | 29.6 | 2271@50 | 31 |
| 4120524 | 235/55R19 | 105V | XL | 600 A A | 9 | BSW | 7.0 | 9.7 | 29.0 | 2039@50 | 30 |
| 9630813 | 235/40R19 | 96W | XL | 600 A A | 9 | BSW | 8.5 | 9.5 | 26.4 | 1565@50 | 26 |
| 9630814 | 245/40R19 | 98Y | XL | 600 A A | 9 | BSW | 8.5 | 9.8 | 26.7 | 1653@50 | 27 |
| 4120941 | 225/55R19 | 103V | XL | 600 A A | 9 | BSW | 7.0 | 9.65 | 28.66 | 1929@50 | 28 |
| 9630815 | 245/45R19 | 102W | XL | 600 A A | 9 | BSW | 8.0 | 9.6 | 27.7 | 1874@50 | 28 |
| 9630816 | 245/55R19 | 107H | XL | 600 A A | 9 | BSW | 7.5 | 10.0 | 29.6 | 2149@50 | 32 |
| 9630817 | 255/45R19 | 104W | XL | 600 A A | 9 | BSW | 8.5 | 10.0 | 28.1 | 1984@50 | 30 |
| 4120943 | 255/50R19 | 107W | XL | 600 A A | 9 | BSW | 8.0 | 10.94 | 28.98 | 2149@50 | 32 |
| 9630818 | 245/40R20 | 99Y | XL | 600 A A | 9 | BSW | 8.5 | 9.8 | 27.7 | 1709@50 | 28 |
| 9630819 | 235/35R20 | 92Y | XL | 600 A A | 9 | BSW | 8.5 | 9.5 | 26.5 | 1389@50 | 26 |
| 4120942 | 235/50R20 | 104V | XL | 600 A A | 9 | BSW | 7.0 | 10.16 | 29.17 | 1984@50 | 30 |
| 9630820 | 235/55R20 | 105W | XL | 600 A A | 9 | BSW | 7.5 | 9.6 | 30.2 | 2039@50 | 31 |
| 9630821 | 255/40R20 | 101W | XL | 600 A A | 9 | BSW | 9.0 | 10.2 | 28.0 | 1819@50 | 30 |
| 9630822 | 255/45R20 | 105Y | XL | 600 A A | 9 | BSW | 8.5 | 10.0 | 29.1 | 2039@50 | 32 |
| 9630823 | 265/45R20 | 108Y | XL | 600 A A | 9 | BSW | 9.0 | 10.5 | 29.4 | 2205@50 | 34 |
| 9630824 | 275/45R20 | 110Y | XL | 600 A A | 9 | BSW | 9.0 | 10.7 | 29.8 | 2337@50 | 36 |
| 9630825 | 245/35R21 | 96Y | XL | 600 A A | 9 | BSW | 8.5 | 9.8 | 27.8 | 1565@50 | 28 |
| 9630826 | 255/35R21 | 98W | XL | 600 A A | 9 | BSW | 9.0 | 10.2 | 28.0 | 1653@50 | 28 |
| 9630827 | 265/35R21 | 101Y | XL | 600 A A | 9 | BSW | 9.5 | 10.7 | 28.3 | 1819@50 | 31 |
| 9630828 | 275/35R21 | 103W | XL | 600 A A | 9 | BSW | 9.5 | 10.9 | 28.5 | 1929@50 | 32 |
| 9630829 | 265/35R22 | 102W | XL | 600 A A | 9 | BSW | 9.5 | 10.7 | 29.3 | 1874@50 | 32 |
| 9630830 | 285/35R22 | 106Y | XL | 600 A A | 9 | BSW | 10.0 | 11.4 | 29.9 | 2094@50 | 36 |

ICEBLAZER WSTX

STUDDABLE PERFORMANCE WINTER TIRE

The all-new WSTX is the latest addition to Sailun's Ice Blazer family line. A studdable winter tire that is designed for drivers that demand ultimate traction in all winter weather conditions. The modern WSTX design is engineered to give you maximum performance in slush, snow and icy conditions. Our specially formulated compound and polymer blends allow the tire to remain flexible for maximum performance and improves safety and handling. A proprietary blended Silica-Reinforced Formula provides excellent and reliable grip performance in low temperatures. The WSTX is designated with the 3PMSF Severe Service Emblem and is ideal for drivers in winter conditions.

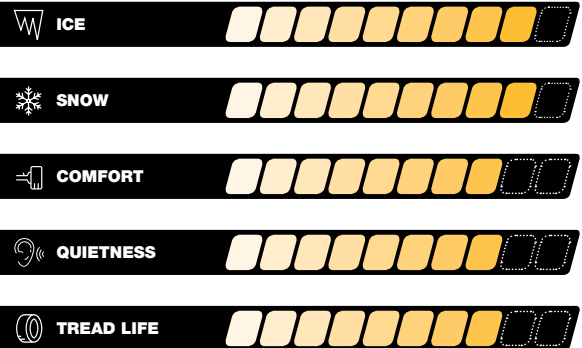


V-SHAPE TREAD BLOCKS

Staggered V-shape tread blocks for good stability and snow performance. The lateral grooves reduce sliding by quickly evacuating water and slush.

DIAGONAL 3D SIPING

3D siping to better control pressure distribution and improve the tire's rigidity. It minimizes the tire deformation during driving and delivers better stability when braking and turning.



| ARTICLE NO. | TIRE SIZE | LI/SR | T.D. (32ND) | O.D. (IN.) | S.W. (IN.) | R.W. (IN.) | SINGLE MAX LOAD (LBS @ PSI) | STUD SIZE | SHIP WEIGHT (LBS) |
|-------------|-----------|-------|----------------|---------------|---------------|---------------|-----------------------------------|--------------|-------------------------|
| 175/65R14 | S5542184 | 82T | 13 | 23.0 | 7.0 | 5.5 | 12 | 12 | 17 |
| 175/70R14 | S5542186 | 84T | 13 | 23.7 | 7.0 | 5.5 | 12 | 12 | 17 |
| 185/65R14 | S5542165 | 86T | 13 | 23.5 | 7.4 | 5.5 | 12 | 12 | 18 |
| 175/65R15 | S5542185 | 84T | 13 | 24.0 | 7.0 | 5.5 | 12 | 12 | 18 |
| 185/55R15 | S5542163 | 82T | 13 | 23.0 | 7.6 | 6.0 | 12 | 12 | 19 |
| 185/60R15 | S5542164 | 84T | 13 | 23.7 | 7.4 | 5.5 | 12 | 12 | 19 |
| 185/65R15 | S5542145 | 88T | 13 | 24.4 | 7.4 | 5.5 | 12 | 12 | 20 |
| 195/60R15 | S5542166 | 88T | 13 | 24.2 | 7.9 | 6.0 | 12 | 12 | 20 |
| 195/65R15 | S5542146 | 91T | 13 | 25.0 | 7.9 | 6.0 | 12 | 12 | 21 |
| 205/65R15 | S5542167 | 94T | 13 | 25.5 | 8.2 | 6.0 | 12 | 12 | 30 |
| 235/75R15 | S5548577 | 105S | 13 | 28.9 | 9.3 | 6.5 | 12 | 12 | 22 |
| 195/50R16 | S5542187 | 84H | 13 | 23.7 | 7.9 | 6.0 | 12 | 12 | 20 |
| 205/50R16 | S5542188 | 87T | 13 | 24.1 | 8.4 | 6.5 | 12 | 12 | 22 |
| 205/55R16 | S5542147 | 91T | 13 | 24.9 | 8.4 | 6.5 | 12 | 12 | 22 |
| 205/60R16 | S5542148 | 92T | 13 | 25.7 | 8.2 | 6.0 | 12 | 12 | 22 |
| 205/65R16 | S5542168 | 95T | 13 | 26.5 | 8.2 | 6.0 | 12 | 12 | 24 |
| 215/55R16 | S5542171 | 97H | 13 | 25.3 | 8.9 | 7.0 | 12 | 12 | 24 |
| 215/60R16 | S5542149 | 95T | 13 | 26.1 | 8.7 | 6.5 | 12 | 12 | 24 |
| 215/65R16 | S5542173 | 98T | 13 | 27.0 | 8.7 | 6.5 | 12 | 12 | 25 |
| 215/70R16 | S5542150 | 100S | 13 | 27.9 | 8.7 | 6.5 | 12 | 12 | 27 |
| 225/60R16 | S5542177 | 98T | 13 | 26.6 | 9.0 | 6.5 | 12 | 12 | 25 |
| 225/65R16 | S5542156 | 100T | 13 | 27.5 | 9.0 | 6.5 | 12 | 12 | 26 |
| 225/70R16 | S5542194 | 103S | 13 | 28.4 | 9.0 | 6.5 | 12 | 12 | 28 |
| 235/60R16 | S5542182 | 100T | 13 | 27.1 | 9.4 | 7.0 | 12 | 12 | 28 |
| 235/65R16 | S5542183 | 103T | 13 | 28.0 | 9.4 | 7.0 | 12 | 12 | 30 |
| 205/50R17 | S5542189 | 93H | 13 | 25.1 | 8.4 | 6.5 | 12 | 12 | 24 |
| 215/45R17 | S5542169 | 91T | 13 | 24.6 | 8.4 | 7.0 | 12 | 12 | 22 |
| 215/50R17 | S5542170 | 95T | 13 | 25.5 | 8.9 | 7.0 | 12 | 12 | 24 |
| 215/55R17 | S5542144 | 94T | 13 | 26.3 | 8.9 | 7.0 | 12 | 12 | 25 |
| 215/60R17 | S5542172 | 96T | 13 | 27.2 | 8.7 | 6.5 | 12 | 12 | 26 |
| 215/65R17 | S5542174 | 99T | 13 | 28.0 | 8.7 | 6.5 | 12 | 12 | 27 |
| 225/45R17 | S5542152 | 94H | 13 | 25.0 | 8.9 | 7.5 | 12 | 12 | 23 |
| 225/50R17 | S5542154 | 98H | 13 | 25.9 | 9.2 | 7.0 | 12 | 12 | 27 |
| 225/55R17 | S5542175 | 97T | 13 | 26.8 | 9.2 | 7.0 | 12 | 12 | 27 |
| 225/60R17 | S5542155 | 99T | 13 | 27.6 | 9.0 | 6.5 | 12 | 12 | 26 |
| 225/65R17 | S5542157 | 102S | 13 | 28.5 | 9.0 | 6.5 | 12 | 12 | 29 |
| 235/45R17 | S5542179 | 97T | 13 | 25.4 | 9.3 | 8.0 | 12 | 12 | 24 |
| 235/55R17 | S5542181 | 99H | 13 | 27.2 | 9.6 | 7.5 | 12 | 12 | 28 |
| 235/60R17 | S5542200 | 102T | 13 | 28.1 | 9.4 | 7.0 | 12 | 12 | 29 |
| 235/65R17 | S5542158 | 104S | 13 | 29.1 | 9.4 | 7.0 | 12 | 12 | 30 |
| 215/45R18 | S5542190 | 93H | 13 | 25.6 | 8.4 | 7.0 | 12 | 12 | 24 |
| 215/55R18 | S5542191 | 95T | 13 | 27.3 | 8.9 | 7.0 | 12 | 12 | 26 |
| 225/40R18 | S5542151 | 92H | 13 | 25.1 | 9.1 | 8.0 | 12 | 12 | 22 |
| 225/45R18 | S5542153 | 95T | 13 | 25.9 | 8.9 | 7.5 | 12 | 12 | 24 |
| 225/50R18 | S5542192 | 95H | 13 | 26.9 | 9.2 | 7.0 | 12 | 12 | 27 |
| 225/55R18 | S5542193 | 98T | 13 | 27.8 | 9.2 | 7.0 | 12 | 12 | 26 |
| 225/60R18 | S5542178 | 100T | 13 | 28.6 | 9.0 | 6.5 | 12 | 12 | 28 |
| 235/45R18 | S5542195 | 94H | 13 | 26.3 | 9.3 | 8.0 | 12 | 12 | 26 |
| 235/50R18 | S5542180 | 101T | 13 | 27.3 | 9.6 | 7.5 | 12 | 12 | 28 |
| 235/55R18 | S5542197 | 100T | 13 | 28.1 | 9.6 | 7.5 | 12 | 12 | 30 |
| 235/60R18 | S5548576 | 103H | 13 | 29.1 | 9.5 | 7.0 | 12 | 12 | 30 |
| 245/45R18 | S5542201 | 100H | 13 | 26.7 | 9.6 | 8.0 | 12 | 12 | 27 |
| 255/55R18 | S5542206 | 105H | 13 | 29.0 | 10.4 | 8.0 | 12 | 12 | 35 |
| 255/65R18 | S5542209 | 111S | 13 | 31.1 | 10.2 | 7.5 | 12 | 12 | 36 |
| 225/55R19 | S5542176 | 99H | 13 | 28.8 | 9.2 | 7.0 | 12 | 12 | 30 |
| 235/45R19 | S5542196 | 95H | 13 | 27.4 | 9.3 | 8.0 | 12 | 12 | 27 |
| 235/55R19 | S5542198 | 101H | 13 | 29.2 | 9.6 | 7.5 | 12 | 12 | 30 |
| 245/55R19 | S5542202 | 103H | 13 | 29.6 | 10.0 | 7.5 | 12 | 12 | 33 |
| 255/50R19 | S5542204 | 107H | 13 | 29.1 | 10.4 | 8.0 | 12 | 12 | 34 |
| 255/60R19 | S5542208 | 109T | 13 | 31.1 | 10.2 | 7.5 | 12 | 12 | 34 |
| 235/55R20 | S5542199 | 102H | 13 | 30.2 | 9.6 | 7.5 | 12 | 12 | 32 |
| 255/45R20 | S5542203 | 101V | 13 | 29.1 | 10.0 | 8.5 | 12 | 12 | 32 |
| 255/50R20 | S5542205 | 105V | 13 | 30.1 | 10.4 | 8.0 | 12 | 12 | 35 |
| 255/55R20 | S5542207 | 107H | 13 | 31.0 | 10.4 | 8.0 | 12 | 12 | 37 |

TBC LIMITED WARRANTY

This Limited Warranty is made by TBC Brands, LLC ("TBC Brands") & applies to select Sailun Passenger & Light Truck tires (See Warranty Table). The original purchaser is entitled to the benefits of this Limited Warranty; subject to the application of warranty exclusions or the purchaser's failure to comply with this Limited Warranty's use, maintenance, or tire rotation requirements. This Limited Warranty applies to tires purchased on or after January 1, 2019. Tires purchased before that date are subject to previous published warranties.

SAILUN WARRANTY TABLE:

| MODEL | MILES | # MONTHS | DEFECTS/ MATERIALS | TREAD LIFE PROTECTION |
|----------------------------------|--------|----------|-----------------------|--------------------------|
| PASSENGER: | | | | |
| Inspire | 70,000 | 60 | Yes | Yes |
| Atrezzo SH408 | 55,000 | 60 | Yes | Yes |
| Atrezzo SVA2 | 50,000 | 60 | Yes | Yes |
| Atrezzo SVA1 | 40,000 | 60 | Yes | Yes |
| LIGHT TRUCK: | | | | |
| Attrezzo SVR LX+ | 40,000 | 60 | Yes | Yes |
| Terramax HLT | 50,000 | 60 | Yes | Yes |
| Terramax HLT | 50,000 | 60 | Yes | Yes |
| Terramax AT2 | 50,000 | 60 | Yes | Yes |
| Terramax RT | 45,000 | 60 | Yes | Yes |
| COMMERCIAL LIGHT TRUCK: | | | | |
| Terramax HLT-C | N/A | 60 | Yes | No |
| ELECTRIC VEHICLE/ HYBRID: | | | | |
| ERANGE IEV | 50,000 | 60 | Yes | Yes, EV |
| ERANGE IEV | 80,000 | 60 | Yes | Yes, ICE* |
| WINTER TIRE | | | | |
| ICEBLAZER WSTX | N/A | 60 | Yes | No |

*ICE = Internal Combustion Engine vehicle. Note: All tire models, staggered vehicle fitments have half mileage for rear tires if different size than the front tires.

ELIGIBILITY FOR LIMITED WARRANTY COVERAGE

You must be the original purchaser on or after January 1, 2019 of a warranted tire & the tire must have been continuously installed on the vehicle on which it was first installed. Your sales receipt is your proof of purchase & proof of the vehicle upon which the tire was originally installed. This Limited Warranty is not transferable to another vehicle or to another person. This warranty does not cover tires installed on a commercial vehicle or a vehicle put in commercial use.

To be & remain eligible for the Tread Life portion of your Limited Warranty, you must present proof that you have rotated the Sailun tire, in accordance with the prescribed rotation pattern, at least every 6,000 miles following installation. For your convenience, the prescribed tire rotation pattern & a space to record the date & frequency of rotation is provided at the end of this Limited Warranty booklet.

LIMITED TREAD LIFE WARRANTY ON SPECIFIC SAILUN TIRES

No tire manufacturer or dealer can assure that you will achieve a certain number of driven miles or months of use from a given tire because driving habits, road & driving conditions, & vehicle maintenance & condition all play a role in tire tread life & all differ with each purchaser. However, the Sailun tire lines listed in the Tread Life Warranty Table at the end of this Limited Warranty are warranted for a specified number of actual miles driven or months of installation ("Tread Life") on the original vehicle, whichever first occurs. The Sailun tire lines not specifically identified in the Tread Life Warranty Table are not covered by a Tread Life Limited Warranty & are only warranted against defects in material & workmanship.

If you purchased a Sailun tire identified in the Tread Life Warranty Table & the tire wears evenly, but fails to provide the number of warranted miles or months of use, whichever first occurs, you are entitled to receive a prorated allowance applicable to the purchase price of a comparable new replacement Sailun tire or another brand of tire offered by TBC Brands. The amount of the warranty replacement allowance is based on the "Useable Tread Life" of each warranted Sailun tire line. The amount of the allowance will be equal to the percentage of the warranted Useable Tread Life remaining (months or miles, whichever first occurs) when the end of tire's Useable Tread Life has been reached.

A tire's "Useable Tread Life" is the original tread groove depth down to the treadwear safety indicator bars that are molded into the tire groove. The treadwear indicators are reached when only 2/32nds of an inch of tire tread remains. A tire has delivered its full "Useable Tread Life" when its original new tire tread has become worn down to the treadwear indicators at 2/32" (1.6 millimeters) of tread remaining. Tires become unsafe for use & must be replaced to avoid accident or injury when the tread depth remaining

is 2/32" or less. The Limited Tread Life Warranty does not cover & you are responsible for the charges for mounting & balancing the replacement tire, and applicable taxes.

LIMITED WARRANTY AGAINST DEFECTS IN WORKMANSHIP & MATERIALS

All Sailun tire lines are warranted against failures due to defects in workmanship & materials for the life of the original tread, or 5 years from the date of purchase, (whichever occurs first).

A no-charge warranty replacement is available for all Sailun tire lines if a defect in material or workmanship occurs during the first 2/32nds of an inch of Useable Tread or within 12 months from the date of purchase (whichever occurs first). If you are entitled to receive a no-charge warranty replacement tire, the mounting & balancing of that tire will also be provided at no charge.

If a Sailun tire fails due to a defect in workmanship or materials after the applicable no-charge replacement period specified above for the Sailun tire line you purchased, you will be entitled to a prorated allowance applicable to the purchase price of a comparable new Sailun or other tire brand marketed by TBC Brands. This replacement tire allowance will be prorated & calculated by dividing the number of 32nds of Useable Tread remaining when the tire is presented for warranty replacement (rounding to the nearest 32nd of an inch) by the total number of 32nds of an inch of Useable Tread. You will be responsible for the charges applicable for mounting, balancing & taxes for the warranty replacement tire when the tire fails due to defects in material or workmanship after your Sailun tire line no-charge replacement period has ended. Once the Useable Tread of a Sailun tire has been exhausted, this warranty for defects in material & workmanship has also been exhausted & the benefits of the Limited Warranty terminate.

LIMITED RIDE DISTURBANCE WARRANTY

If you experience "Ride Disturbance" attributable solely to the Sailun tire you purchased during the first 2/32nds of an inch of Useable Tread Life, we will replace the tire causing the Ride Disturbance with a comparable new Sailun tire without charge for the replacement tire, mounting, balancing or taxes. "Ride Disturbance" occurs when a tire does not deliver a satisfactory ride or displays an unsatisfactory road handling characteristic that is attributable solely to the tire. Ride Disturbance may be caused by many other mechanical issues, including improper alignment & failing shock absorbers & brakes. Normally, Ride Disturbance should not be present when tires are properly mounted & balanced, & never occurs on all four tires. Therefore, a Ride Disturbance Warranty will not apply to all four tires. Ride Disturbance warranty claims will not be honored after the first 2/32nds of an inch of Useable Tread wear has occurred.

WARRANTY EXCLUSIONS & LIMITATIONS

The exclusions & limitations on the applicability of the Limited Warranty set forth in this section & the other Limited Warranties set forth in other sections should be read carefully because they determine whether you are entitled to a warranty replacement or a warranty replacement allowance. The Limited Warranties for the Sailun tire you purchased do not apply, if one of the following conditions applies or the tire failed because:

- tires installed on a vehicle registered or normally used outside the United States & Canada
- the tire was installed on a commercial or commercial use vehicle (e.g., limousine)
- the tire was installed on a recreational vehicle (e.g., camping & Motor homes)
- the tire was transferred to another vehicle after it was originally installed
- tires installed on a vehicle with a malfunctioning odometer
- the tire is branded as "Blemish" or "NA" or the molded DOT number has been removed or disfigured
- the tire was repaired in a manner that does not comply with the U.S. Tire Manufacturers Association (USTMA) standards
- tires that are a different size than recommended for your vehicle
- Road hazard, potholes, or collision damage, improper mounting or balancing, vandalism, theft, racing, off road use (forestry roads, gravel, rock) and misapplication of the tire to vehicle
- over & under inflation, overloading, or failure to maintain proper tire pressure
- addition of liquids, solids or gases (other than air, nitrogen, carbon dioxide)
- ozone or weather cracks or checking occurring four (4) years after the date of purchase or, if that proof is not available, four (4) years after the DOT serial date
- vehicle mechanical failures, improper alignment, brake & shock failure,

or improperly aligned tires causing "irregular treadwear" (i.e. tread groove depth difference of 2/32nds of an inch or more on the same tire) • the wheel on which the tire is mounted is defective or fails • alteration of tread design to improve traction (e.g., siping) or grinding to improve uniformity, or sidewall inlays • Winter tires must be used during winter months only. These include the months of September through April, defined as a period beginning on or after September 1st of a given year and ending no later than April 30th of the following year

OWNER OBLIGATIONS (All Limited Warranties)

It is your obligation to present the tire for which you are seeking a warranty replacement or allowance to a Sailun tire dealer. Until a tire is accepted by the dealer for warranty replacement or allowance, the tire remains the responsibility of the purchaser. Once the tire is accepted by the dealer for Limited Warranty replacement or allowance, you agree to relinquish all ownership & all rights to the tire. To locate a dealer near you, contact TBC Brands by telephone toll-free during normal business hours at 866-822-4968. If there is a dispute with respect to the application of this warranty you must make the tire available for further inspection. When you purchased your Sailun tire, the dealer presented you with proof of its purchase in the form of a sales receipt, warranty registration form, & this Limited Warranty Booklet. That receipt also recorded & provides proof of important information that you must present when you seek the benefits of the Limited Warranties. You should retain the purchase receipt because no warranty claim will be accepted by your Sailun dealer or TBC Brands unless you retain & present the following to the dealer when you seek to the benefits of this limited warranty:

- proof of your purchase of the Sailun tire presented
- proof of the date of your purchase (if none is presented the date of manufacture will be used for the purposes of this Limited Warranty)
- proof as to the vehicle on which this tire was mounted
- the mileage of the vehicle on which this tire was mounted on the date of purchase
- proof that the tire was properly rotated at the required intervals when a Tread Life Warranty claim is presented

LEGAL RIGHTS

This Limited Warranty gives you legal rights, & you may have additional legal rights under applicable federal statutes & regulations or state law. Your legal rights under state law may vary state to state. To the extent permitted by the laws of your state, this Limited Warranty does not cover & expressly exclude any coverage for personal injury, property damage, loss of time, inconvenience, loss of use of your vehicle or tire, or any other incidental or consequential damages. No express warranty is given other than those expressly stated in this Limited Warranty booklet. Any implied warranty of merchantability, fitness for a particular purpose or otherwise, is limited in duration & expire when the tire's Useable Tread is exhausted as specified in this limited warranty. No implied warranty of merchantability, fitness for a particular purpose or otherwise, is given on tires used on commercial vehicles or for commercial use vehicles. This is the only warranty that applies to the Sailun tires purchased by you & supersedes & replaces the terms of any previous warranty. TBC Brands neither assumes nor extends, nor authorizes any other person or entity to assume or extend on its behalf, any other or different warranty obligation.

IMPORTANT SAFETY WARNINGS & INFORMATION

Sailun tire owners should follow these safety tips to help avoid serious accident & injury:

- Tire under inflation, over inflation or overloading can cause tire failure (you must adhere to directions in the manufacturer's owner's manual or tire placard in the vehicle for proper tire pressures for the front & rear tires)
- Be sure that the tire valve caps are all present & securely attached, the valve cap is one of the primary seals against air leaks
- Tires should be mounted by only specially trained dealer personnel
- Match the tire's diameter with the wheel rim's bead seat diameter (for example, a 15-inch tire must only be mounted on a 15-inch wheel)
- Inflation pressure should be checked, using an accurate tire gauge, at least once a month & check pressure when the tire is cool; never bleed hot tires as it may lead to under inflation after cooling; but never allow children to check, inflate or deflate tires
- Before towing a trailer, check with your dealer to determine proper tire sizing & pressures that may be required because of the trailer load • Check tires frequently for cuts, bulges, abnormal or uneven wear, abrasions, glass or metal debris & impact damage
- Repairs to tires must always consist of a plug combined with a patch applied to the inside of the tire when the tire is removed from the wheel; plug repairs only are improper & are prone to leaks & sudden failures
- Avoid road hazards, debris, curbs & potholes which can damage your tires, wheels & alignment

• Never over inflate your tire & never exceed the maximum pressure & load molded in the tire sidewall & only inflate tire to maximum pressure when your tires are carrying the maximum load

• Have tire punctures repaired by the trained personnel at a Sailun dealer

• If your vehicle is stuck in snow, mud, sand or is impeded by a physical obstruction, such as a ditch, avoid excessive tire spinning; never exceed 35 miles an hour on the odometer when spinning a tire as the centrifugal force generated above that speed could result in tire deformation or explosion. Instead, use gentle forward & backward motion to free the vehicle

• Best tire performance is achieved when all tires are of the same type & the size that is recommended by the vehicle manufacturer for the particular axle. Never mount radial ply tires on the same axle as non-radial ply tires; never mount radial tires on the front axle when non-radial tires are mounted on the rear axle as these conditions can create vehicle instability resulting in sudden loss of control, damage & injury

• It is recommended that all four (4) tires on a passenger or light truck vehicle be replaced at the same time. However, when only two (2) tires are replaced, the new tires should be installed on the rear axle to achieve better driving performance & safety

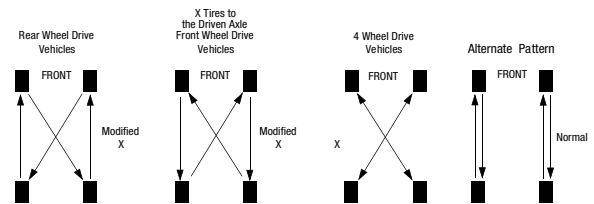
• Never drive on tires that have less than 2/32nds of an inch of tread remaining; replace tires as soon as the tread reaches the treadwear indicators molded into the tread grooves of the tire which reveal when the tread depth remaining is 2/32nds of an inch. Continued use creates a serious risk of tire failure, loss of control & serious injury

• Never operate your vehicle at speeds above that posted or speeds that are not justified by the road conditions

APPROVED TIRE ROTATION PATTERNS*

• None of the patterns illustrated shows rotation of a spare tire. "Temporary Use" or "Mini" spares cannot be included in a rotation pattern. A full size comparable spare tire (that is, same size & radial type) may be included in any of the patterns shown above by inserting the spare in the right rear position. The tire that would have moved to the right rear position becomes the spare.

*When rotating tires with a directional tread pattern, observe the arrows molded on the tire sidewall which show the direction the tire should turn. For vehicles that are equipped with different size tires front to rear, refer to the vehicle manufacturer's rotation procedures in the vehicle owner's manual.



TIRE REGISTRATION

Purchasers of tires will receive tire registration information from your tire dealer at the time you purchase your tires. For easy registration online please visit tirereg.tbcbands.com. This will ensure you to be contacted in the event of a product recall.

| | |
|--|------------|
| Dealer Issuing Warranty: | |
| Address: | |
| City: | State: |
| Zip: | Phone No.: |
| Issued to: | |
| Address: | |
| City: | State: |
| Zip: | Phone No.: |
| Purchase Date: | |
| Speedometer Reading at time of Sale: | |
| Make of Car: | Year: |
| Check one of the following: <input type="checkbox"/> New Sale <input type="checkbox"/> Warranty <input type="checkbox"/> Replacement | |
| TIRE SERIAL NUMBERS | |
| 1. | 2. |
| 3. | 4. |
| 5. | 6. |

IMPORTANT: Inspection/rotation is required every 5,000 to 6,000 miles. Vehicle owner/user must retain rotation record.

SAW - 1123

GARANTÍA LIMITADA DE TBC

This Limited Warranty is made by TBC Brands, LLC ("TBC Brands") & applies to select Sailun Passenger & Light Truck tires (See Warranty Table). The original purchaser is entitled to the benefits of this Limited Warranty; subject to the application of warranty exclusions or the purchaser's failure to comply with this Limited Warranty's use, maintenance, or tire rotation requirements. This Limited Warranty applies to tires purchased on or after January 1, 2019. Tires purchased before that date are subject to previous published warranties.

TABLA DE GARANTÍA DE SAILUN:

| MODELO | MILLAS | NO. DE MESES | DEFECTOS/MATERIALES | PROTECCIÓN DE VIDA ÚTIL DE LA BANDA DE RODAMIENTO |
|------------------------------------|--------|--------------|---------------------|---|
| PASAJERO: | | | | |
| Inspire | 70,000 | 60 | Sí | Sí |
| Atrezzo SH408 | 55,000 | 60 | Sí | Sí |
| Atrezzo SVA2 | 50,000 | 60 | Sí | Sí |
| Atrezzo SVA1 | 40,000 | 60 | Sí | Sí |
| CAMIONETA LIGERA: | | | | |
| Atrezzo SVRLX+ | 40,000 | 60 | Sí | Sí |
| Terramax HLT | 50,000 | 60 | Sí | Sí |
| Terramax AT2 | 50,000 | 60 | Sí | Sí |
| Terramax A/T 4S | 50,000 | 60 | Sí | Sí |
| Terramax RT | 45,000 | 60 | Sí | Sí |
| CAMIONETA LIGERA COMERCIAL: | | | | |
| Terramax HLT-C | N/A | 60 | Sí | No |
| VEHÍCULO ELÉCTRICO/HÍBRIDO: | | | | |
| ERANGE IVE | 50,000 | 60 | Sí | Sí, VE |
| ERANGE IVE | 80,000 | 60 | Sí | Sí, ICE* |
| WINTER TIRE | | | | |
| ICE BLAZER WSTX | N/A | 60 | Yes | No |

*ICE= Vehículo de motor de combustión interna

Nota: Para todos los modelos de neumáticos, los vehículos escalonados tienen la mitad del millaje para los neumáticos traseros si son de tamaño distinto a los neumáticos delanteros.

ELEGIBILIDAD PARA COBERTURA DE LA GARANTÍA LIMITADA

Usted debe ser el comprador original a partir del 1 de enero de 2019 de un neumático con garantía, y el neumático debe haberse instalado en forma continua en el vehículo donde se instaló por primera vez. Su recibo de venta es su comprobante de compra, así como el comprobante del vehículo donde se instaló originalmente el neumático. La presente Garantía limitada no puede transferirse a otro vehículo ni a otra persona. Esta garantía no cubre los neumáticos instalados en un vehículo comercial o de uso comercial.

A fin de obtener y conservar la elegibilidad para la porción relacionada con la vida útil de la banda de rodamiento de su Garantía limitada, usted debe presentar un comprobante que demuestre que ha rotado el neumático Sailun, según el patrón de rotación establecido, al menos cada 6,000 millas luego de la instalación. Para su comodidad, al final del presente folleto de la Garantía limitada se proporciona el patrón establecido para la rotación de los neumáticos y un espacio para registrar la fecha y la frecuencia de las rotaciones.

GARANTÍA LIMITADA DE LA VIDA ÚTIL DE LA BANDA DE RODAMIENTO EN VEHÍCULOS SAILUN ESPECÍFICOS

Ningún fabricante o distribuidor de neumáticos puede garantizar que usted alcance una determinada cantidad de millas recorridas o meses de uso con un neumático determinado, ya que los hábitos de conducción, las condiciones de conducción y de los caminos y el mantenimiento y las condiciones del vehículo tienen todos un papel fundamental en la vida útil de la banda de rodamiento del neumático y difieren según cada comprador. Sin embargo, las líneas de neumáticos Sailun que se mencionan en la Tabla de garantía de la vida útil de la banda de rodamiento al final de la presente Garantía limitada están cubiertos por la garantía por una cantidad específica de millas reales recorridas o meses de instalación ("Vida útil de la banda de rodamiento") en el vehículo original, lo que ocurra primero. Las líneas de neumáticos Sailun que no se identifican específicamente en la Tabla de garantía de la Vida útil de la banda de rodamiento no están cubiertas por una Garantía limitada de la Vida útil de la banda de rodamiento y solo cuentan con una garantía contra los defectos de los materiales y la mano de obra.

Si usted compró un neumático Sailun identificado en la Tabla de garantía de la Vida útil de la banda de rodamiento, y el neumático se desgasta de manera uniforme, pero no proporciona la cantidad de millas o los meses de uso en garantía, lo que ocurra primero, usted tiene derecho a un subsidio prorrateado aplicable al precio de compra de un neumático nuevo y comparable de reemplazo de Sailun o de otra marca que ofrezca TBC Brands. El importe del subsidio de reemplazo por garantía se basa en la "Vida útil de la banda de rodamiento utilizable" de cada línea de neumáticos Sailun

en garantía. El importe del subsidio será igual al porcentaje de la Vida útil de la banda de rodamiento utilizable restante que se encuentra en garantía (meses o millas, lo que ocurra primero) una vez que se haya alcanzado el final de la Vida útil de la banda de rodamiento utilizable del neumático.

La "Vida útil de la banda de rodamiento utilizable" de un neumático es la profundidad original de las ranuras de la banda de rodamiento hasta las barras que indican la seguridad del desgaste de la banda de rodamiento moldeadas dentro de la ranura del neumático. Los indicadores de desgaste de la banda de rodamiento se alcanzan cuando la banda de rodamiento restante es de solo 2/32". Se considera que un neumático ha agotado toda su "Vida útil de la banda de rodamiento utilizable" cuando la banda de rodamiento del neumático nuevo original se ha desgastado al punto que los indicadores de desgaste de la banda de rodamiento muestran que la banda de rodamiento restante es de 2/32" (1.6 milímetros). Los neumáticos se tornan inseguros para su uso y se deben cambiar para evitar accidentes o lesiones cuando la profundidad de la banda de rodamiento restante es de 2/32" o menos. La Garantía limitada de la Vida útil de la banda de rodamiento no cubre y usted debe asumir los cargos derivados del montaje y balanceo del neumático de reemplazo, así como los impuestos correspondientes.

GARANTÍA LIMITADA CONTRA DEFECTOS DE LA MANO DE OBRA Y LOS MATERIALES

Todas las líneas de neumáticos Sailun tienen garantía contra fallas por defectos de la mano de obra y los materiales durante la vida útil de la banda de rodamiento original o durante 5 años a partir de la fecha de compra, lo que ocurra primero.

Se encuentra disponible un neumático de reemplazo por garantía sin cargo para todas las líneas de neumáticos Sailun en caso de que surja un defecto en los materiales o la mano de obra durante las primeras 2/32" de la Banda de rodamiento utilizable o dentro de los 12 meses a partir de la fecha de compra, lo que ocurra primero. Si usted tiene derecho a recibir un neumático de reemplazo por garantía sin cargo, también se le proporcionarán sin cargo el montaje y el balanceo de ese neumático.

Si un neumático Sailun falla debido a un defecto de mano de obra o de los materiales después del periodo correspondiente de reemplazo sin cargo mencionado anteriormente para la línea de neumáticos Sailun que usted compró, usted tendrá derecho a un subsidio prorrateado aplicable al precio de compra de un neumático nuevo y comparable de Sailun o de otra marca que comercialice TBC Brands. Este subsidio para el neumático de reemplazo se prorrateará y calculará dividiendo la cantidad de 32vos de Banda de rodamiento utilizable restantes cuando se presente el neumático para el reemplazo por garantía (redondeados al 32vo más cercano de una pulgada) por la cantidad total de 32vos de pulgada de la Banda de rodamiento utilizable.

Usted deberá pagar los cargos correspondientes al montaje, el balanceo y los impuestos del neumático de reemplazo por garantía cuando el neumático falle debido a defectos de los materiales o la mano de obra una vez que haya finalizado el periodo de reemplazo sin cargo de su línea de neumáticos Sailun. Una vez que se haya agotado la Banda de rodamiento utilizable de un neumático Sailun, también se habrá agotado la presente garantía con respecto a los defectos de materiales y de mano de obra, así como los beneficios de la Garantía limitada.

GARANTÍA LIMITADA POR PERTURBACIÓN DE CONDUCCIÓN

Si usted experimenta una "Perturbación de conducción" atribuible únicamente al neumático Sailun que usted compró durante las primeras 2/32" de la Vida útil de la banda de rodamiento utilizable, reemplazaremos el neumático que causa la Perturbación de conducción por un neumático Sailun nuevo y comparable sin cargo alguno por el neumático de reemplazo, el montaje, el balanceo o los impuestos. La Perturbación de conducción tiene lugar cuando un neumático no ofrece una conducción satisfactoria o muestra una característica de manejo poco satisfactoria que se atribuye únicamente al neumático. La Perturbación de conducción puede deberse a muchos otros problemas mecánicos, que incluyen una alineación inadecuada y amortiguadores

y frenos defectuosos. Normalmente, no debería haber Perturbación de conducción si los neumáticos están correctamente montados y balanceados y nunca tiene lugar en los cuatro neumáticos. En consecuencia, la garantía por Perturbación de conducción no se aplica a los cuatro neumáticos. No se hará lugar a reclamos de garantía por Perturbación de conducción una vez que se hayan desgastado las primeras 2/32" de la Banda de rodamiento utilizable.

EXCLUSIONES Y LIMITACIONES DE LA GARANTÍA

Lea cuidadosamente las exclusiones y limitaciones sobre la vigencia de la Garantía limitada descrita en esta sección y las demás Garantías limitadas descritas en otras secciones, ya que estas determinan si usted tiene derecho a un reemplazo por garantía o subsidio de reemplazo por garantía. Las Garantías limitadas para el neumático Sailun que usted compró no se aplican si tiene lugar una de las siguientes condiciones o si el neumático falla debido a:

- neumáticos instalados en un vehículo registrado o que se utiliza normalmente fuera de los Estados Unidos y Canadá
- el neumático se instaló en un vehículo comercial o de uso comercial (como un remis)
- el neumático se instaló en un vehículo de uso recreativo (como vehículos para acampar y casas rodantes)
- el neumático se transfirió a otro vehículo luego de su instalación original
- los neumáticos se instalaron en un vehículo con un odómetro que no funciona correctamente
- el neumático tiene el marcaje "Blemish" o "NA" o el número DOT moldeado ha sido retirado o desdibujado
- el neumático se reparó de una manera que no cumple con las normas de la Asociación de Fabricantes de Neumáticos de los Estados Unidos (USTMA, por su sigla en inglés)
- los neumáticos tienen un tamaño diferente al recomendado para su vehículo
- riesgos del camino, baches o daños por colisión, montaje o balanceo inadecuados, vandalismo, robo, carreras, uso fuera del camino (caminos forestales, de grava o rocas) y aplicación incorrecta del neumático al vehículo
- inflado en exceso y deficiente, sobrecarga o falta de presión adecuada de los neumáticos
- agregado de líquidos, sólidos o gases (que no sean aire, nitrógeno o dióxido de carbono)
- grietas por ozono o el clima, o inspección cuatro (4) años después de la fecha de compra, o si no cuenta con el comprobante, cuatro (4) años después de la fecha serial del DOT
- fallas mecánicas del vehículo, alineación inadecuada, falla en los frenos y amortiguadores, o neumáticos no alineados correctamente que generan un "desgaste irregular de la banda de rodamiento" (es decir, existen diferencias de profundidad de las ranuras de la banda de rodamiento de 2/32" o más en el mismo neumático)
- la rueda donde está montado el neumático es defectuosa o falla
- alteración del diseño de la banda de rodamiento para mejorar la tracción (como los cortes) o pulido para mejorar la uniformidad, o incrustaciones en las paredes laterales
- los neumáticos de invierno deben utilizarse únicamente durante los meses de invierno. Estos incluyen los meses de septiembre a abril y se definen como un período que comienza a partir del 1 de septiembre de un año determinado y finaliza a más tardar el 30 de abril del año siguiente.

OBLIGACIONES DEL PROPIETARIO (todas las Garantías limitadas)

Usted tiene la obligación de presentar el neumático por el cual solicita un reemplazo por garantía o un subsidio a un distribuidor de neumáticos Sailun. Hasta que el distribuidor acepte otorgar el reemplazo por garantía o subsidio para un neumático, este último continuará siendo responsabilidad del comprador. Una vez que el distribuidor acepta otorgar el reemplazo o subsidio por Garantía limitada para el neumático, usted acuerda renunciar a todos los derechos de propiedad y demás derechos sobre el neumático. Para ponerse en contacto con un distribuidor cercano, comuníquese con TBC Brands en horario laboral normal a la línea telefónica gratuita 866-822-4968. Si existe una controversia con respecto a la aplicación de esta garantía, usted deberá poner el neumático a disposición para una inspección más exhaustiva. Cuando usted compró el neumático Sailun, el distribuidor le entregó un comprobante de su compra mediante un

recibo de venta, un formulario de registro de garantía y el presente folleto de la Garantía limitada. Ese recibo también registra y brinda constancia de información importante que usted debe presentar cuando solicite los beneficios de las Garantías limitadas. Usted deberá conservar el recibo de compra, ya que su distribuidor de Sailun o TBC Brands no le aceptarán reclamos por garantía a menos que conserve y presente la siguiente documentación al momento de solicitar los beneficios de la presente Garantía limitada:

- comprobante de compra del neumático Sailun que presenta
- comprobante de la fecha de compra (si no se presentara ningún comprobante, se utilizará la fecha de fabricación para los fines de la presente Garantía limitada)
- comprobante del vehículo en el que se montó el neumático
- millaje del vehículo en el que se montó el neumático en la fecha de compra
- comprobante de que el neumático se rotó correctamente en los intervalos requeridos cuando se presenta un reclamo por garantía de la Vida útil de la banda de rodamiento

DERECHOS LEGALES

La presente Garantía limitada le otorga derechos legales, y es probable que usted tenga otros derechos legales en virtud de leyes y regulaciones federales o leyes estatales vigentes. Sus derechos legales en virtud de las leyes estatales pueden variar según el estado. En la medida en que lo permitan las leyes de su estado, la presente Garantía limitada no cubre y excluye expresamente toda cobertura por

- Nunca infle en exceso su neumático ni supere la presión y la carga máximas que están moldeadas en la pared lateral del neumático; infle el neumático hasta la presión máxima únicamente

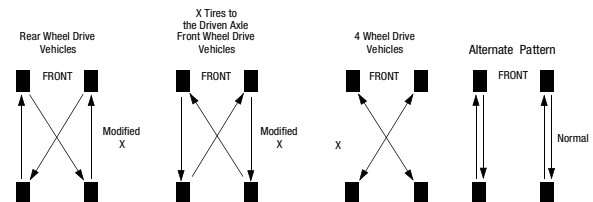
cuando los neumáticos estén llevando la carga máxima

- Repare las punciones de los neumáticos con el personal capacitado de un distribuidor de Sailun
- Si su vehículo queda atascado en nieve, lodo, arena o no puede circular debido a una obstrucción física, como una zanja, evite hacer girar los neumáticos en exceso; nunca supere las 35 millas por hora en el odómetro cuando haga girar un neumático, ya que la fuerza centrífuga que se genera por encima de esa velocidad podría deformar o hacer explotar el neumático. Por el contrario, mueva el vehículo suavemente hacia adelante y hacia atrás para liberarlo
- El mejor rendimiento de los neumáticos se alcanza cuando todos son del mismo tipo y tamaño recomendados por el fabricante del vehículo para el eje específico. Nunca monte neumáticos de capas radiales en el mismo eje como neumáticos de capas no radiales; nunca monte neumáticos radiales en el eje frontal cuando tenga neumáticos no radiales montados en el eje trasero, ya que estas condiciones pueden crear inestabilidad en el vehículo y, en consecuencia, pérdida de control repentino, daños y lesiones
- Se recomienda reemplazar los cuatro (4) neumáticos de las camionetas de pasajeros o ligeras al mismo tiempo. Sin embargo, cuando solo se reemplacen dos (2) neumáticos, los nuevos neumáticos deberán instalarse en el eje trasero para alcanzar un mejor rendimiento y seguridad de conducción
- Nunca maneje con neumáticos que cuenten con menos de 2/32" de banda de rodamiento restante; cambie los neumáticos tan pronto como la banda de rodamiento llegue a los indicadores de desgaste de la banda de rodamiento moldeados en las ranuras del neumático, los cuales muestran cuando la profundidad restante de la banda de rodamiento es de 2/32". El uso continuo crea un riesgo grave de falla del neumático, la pérdida de control y lesiones graves. Nunca maneje su vehículo a velocidades por encima de las publicadas o aquellas que no se justifiquen teniendo en cuenta las condiciones del camino

PATRONES DE ROTACIÓN DE NEUMÁTICOS APROBADOS*

• Ninguno de los patrones descritos muestra la rotación de un neumático de repuesto. Los repuestos de "uso temporario" o "mini" no pueden incluirse en un patrón de rotación. Podrá incluirse un neumático de repuesto comparable de tamaño máximo (es decir, del mismo tamaño y tipo radial) en cualquiera de los patrones que se muestran arriba insertando el repuesto en la posición trasera derecha. El neumático que tendría que haberse movido a la posición trasera derecha se convierte en el repuesto.

*Al rotar los neumáticos con un patrón de banda de rodamiento direccional, observe las flechas moldeadas en la pared lateral del neumático, que muestran la dirección en la que debería girar el neumático. Para los vehículos equipados con neumáticos de diferente tamaño en el frente y atrás, consulte los procedimientos de rotación del fabricante del vehículo que se encuentran en el manual del propietario del vehículo.



REGISTRO DE NEUMÁTICOS

Los compradores de neumáticos recibirán información sobre el registro de neumáticos por parte de su distribuidor de neumáticos al momento de la compra. Para realizar el registro fácilmente en línea, visite tirereg.tbcbands.com. Esto le garantiza que será contactado en caso de retirada de un producto.

| | |
|---|---------------------|
| Garantía emitida por el distribuidor: | |
| Domicilio: | |
| Ciudad: | Estado: |
| Código postal: | Número de teléfono: |
| Emitida a favor de: | |
| Domicilio: | |
| Ciudad: | Estado: |
| Código postal: | Número de teléfono: |
| Fecha de compra: | |
| Lectura del velocímetro al momento de la venta: | |
| Modelo del automóvil: | Año: |
| Marque una de las siguientes: <input type="checkbox"/> Nueva venta <input type="checkbox"/> Garantía <input type="checkbox"/> Reemplazo | |
| NÚMEROS DE SERIE DEL NEUMÁTICO | |
| 1. | 2. |
| 3. | 4. |
| 5. | 6. |

Importante: es obligatorio realizar una inspección/rotación cada 5,000 a 6,000 millas. El propietario/usuario del vehículo debe conservar el registro de la rotación.
SAW - 1123

A large grey trapezoidal shape at the top of the page, with a V-shaped notch at its bottom center. Below it are 17 horizontal lines spanning the width of the page.



SAILUN

ENHANCE / PERFORMANCE / ADVANCE

GOSAILUN.COM / 1-866-822-4968

MARKETING AND DISTRIBUTED BY TBC CORPORATION 4300 TBC WAY, PALM BEACH GARDENS, FL 33410

V7.24U