

S825

MIXED SERVICE WIDE BASE

Code	Size	LI / SR	PR	T.D.	RIM	O.D.	S.W.	S.L.R.	L.C.C.							
									32nds	in.	in.	in.	in.	lbs.	lbs.	psi
8244651	385/65R22.5	158 K	18	21	11.75	42.2	14.9	19.8	9,370	N/A	120					
8244655	425/65R22.5	165 K	20	23	12.25	44.3	16.4	20.3	11,400	N/A	120					
1001333	445/65R22.5	168 K	20	21	13.00	45.3	17.5	20.7	12,300	N/A	120					

The S825 is an all-position mixed service tire, engineered with a rubber compound that resists high-scrub and off-road applications. Stone ejector buttons reduce tire damage, and angled tread blocks are designed to deliver excellent wet traction.

Features & Benefits

- Wide footprint and unique shoulder design for improved stability.
- Interlocking lugs promote improved stability and smoother wear.
- Specially formulated compound for improved tread life.
- Stone ejectors protect tire against stone drilling.

Applications:

- Dump Trucks
- Refuse Trucks
- Mix Concrete Trucks
- Regional Trucks



S825

MIXED SERVICE WIDE BASE



=



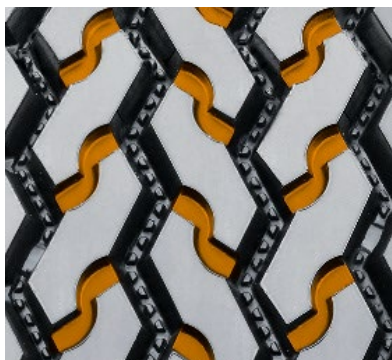
Whether you are driving a dump truck, a cement truck or a refuse truck, these severe service applications need a serious tire and that's why we recommend the Sailun S825 All-Position Mixed Service Wide Base. This tire is ideal for high-scrub off-road applications.

QUALITY:	The Sailun guarantee; a consistently uniform wide base tire with extra strong casing designed for durability.
WARRANTY:	All Sailun products are covered by an industry leading new 6 year warranty.
RETREADABILITY:	Two Recap Casing Warranty with a Casing Retread Allowance. <small>* See Sailun Medium Radial Truck Tire Limited Warranty for complete details.</small>
COMPETITIVE PRODUCTS:	Michelin XZY-3 WB, Goodyear G296 MSA, Bridgestone M854/M844



This exceptional wide base severe service tire has been designed to improve flotation in the most severe conditions including soft soil and mud. The specially formulated compound is resistant in high-scrub applications as well as improving tread life. Obtain Tier 2 quality at significant savings with the Sailun S825.

Interlocking lugs promote improved stability and smoother wear.



Stone ejectors protect tire against stone drilling



Specially formulated compound for improved tread life.



* Every effort had been made to verify the accuracy of the listed specifications.
TBC Corporation and TBC Brands cannot be held responsible for any discrepancies, and as such, the information should be considered as approximate.