

# S815

## MIXED SERVICE ALL-POSITION

Code	Size	LI / SR	PR	T.D.	RIM	O.D.	S.W.	S.L.R.	L.C.C.						
									32nds	in.	in.	in.	lbs.	lbs.	psi
8244551	11R22.5	146/143 K	16	23	8.25	41.7	10.9	19.4	6,610	6,005	120				
8200222	12R22.5	152/148 L	16	21	9.00	42.9	11.8	19.9	7,830	6,940	123				
8244558	11R24.5	149/146 K	16	23	8.25	43.7	10.9	20.4	7,160	6,610	120				
8244589	275/70R22.5	148/145 K	16	22	8.25	37.7	10.7	17.7	6,940	6,395	130				
8244471	315/80R22.5	161/157 G	20	22	9.00	42.4	12.1	19.9	10,200	9,090	130				

The S815 is a mixed service tread featuring a chip-resistant compound ideally suited for off-road and construction applications. A zigzag tread pattern design reduces stone retention, while maximizing traction under all applications. Sidewall protectors are engineered to provide an enhanced level of protection to the casing.

### Features & Benefits

- Large deep shoulder grooves for improved traction and heat dissipation.
- Interlocking lugs promote improved stability and smoother wear.
- Wide footprint and unique shoulder design for improved stability.
- Specially formulated compound and deep tread depth for improved tread life.
- Stone ejectors protect tire from stone drilling.

### Applications:

- Dump Trucks
- Mix Concrete Trucks
- Regional Trucks
- Regional Trailers
- Multi-Axle Trailers
- Spread-Axle Trailers
- Dump Trailers



# S815

MIXED SERVICE ALL-POSITION



Driving a dump truck is hard work and your tires must work just as hard. This is why the Sailun S815 Mixed Service All-Position tire has been designed offering chip resistant rubber compound, an aggressive tread pattern and sidewall protectors. The going gets tough and so does this Sailun tire!

**QUALITY:** Sailun S815 offers a specially formulated tread compound and deeper tread depth for improved tread life ideally suited for off-road and construction applications.

**WARRANTY:** All Sailun products are covered by an industry leading new 6 year warranty.

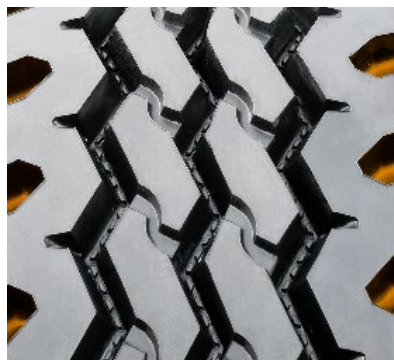
**RETREADABILITY:** Two Recap Casing Warranty with a Casing Retread Allowance.  
\* See Sailun Medium Radial Truck Tire Limited Warranty for complete details.

**COMPETITIVE PRODUCTS:** Michelin XZY-3, Bridgestone M853/M843, Goodyear G731

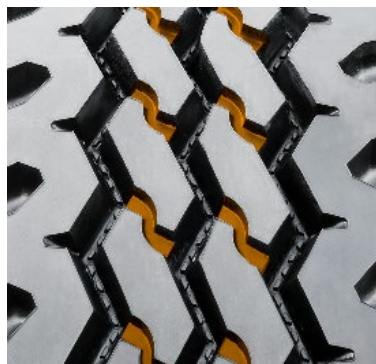


Premium construction with this four belt package and even wearing tread design provides durability and retreadability. Large deep shoulder grooves and interlocking lugs provide stability, traction and smoother wear. Deeper tread depth translates to improved cost per mile. Sailun Tires; top tier quality at a significant savings.

Large deep shoulder grooves for improved traction and heat dissipation.



Interlocking lugs promote improved stability and smoother wear.



Specially formulated compound and deep tread depth for improved tread life.



\* Every effort had been made to verify the accuracy of the listed specifications.  
TBC Corporation and TBC Brands cannot be held responsible for any discrepancies, and as such, the information should be considered as approximate.