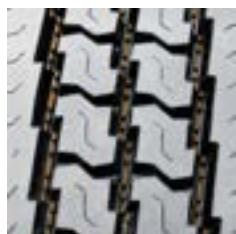


S768 EFT CLOSED SHOULDER DRIVE

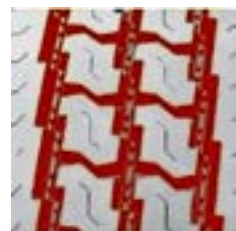
| Code | Size | LI / SR | PR | T.D. | RIM | O.D. | S.W. | S.L.R. | Load Capacity | | |
|---------|-------------|-----------|----|-------|------|------|------|--------|----------------|--------------|-------------|
| | | | | 32nds | in. | in. | in. | in. | Single lbs. | Dual lbs. | A.P. psi |
| 8200109 | 11R22.5 | 144/142 L | 14 | 26 | 8.25 | 41.8 | 10.9 | 19.5 | 6175 | 5840 | 105 |
| 8200193 | 11R22.5 | 146/143 L | 16 | 26 | 8.25 | 41.8 | 10.9 | 19.5 | 6610 | 6005 | 120 |
| 8200198 | 11R24.5 | 146/143 L | 14 | 26 | 8.25 | 43.9 | 10.9 | 20.5 | 6610 | 6005 | 105 |
| 8200199 | 11R24.5 | 149/146 L | 16 | 26 | 8.25 | 43.9 | 10.9 | 20.5 | 7160 | 6610 | 120 |
| 8200196 | 295/75R22.5 | 144/141 L | 14 | 26 | 9.00 | 40.5 | 10.8 | 20.2 | 6175 | 5675 | 110 |
| 8200195 | 285/75R24.5 | 144/141 L | 14 | 26 | 8.25 | 41.9 | 10.8 | 19.6 | 6175 | 5675 | 110 |



The S768 EFT is a premium closed shoulder drive tire, designed with a wide shoulder featuring tapered lateral edges for enhanced lateral stability. The S768 EFT also features stone ejector buttons that reduce stone retention, and an extra-deep 26/32" tread depth for enhanced tread life.

Features & Benefits

- Smartway Verified for lower rolling resistance and excellent fuel efficiency on highways.
- Stone ejectors protect tire from stone drilling.
- Extra deep tread pattern (26/32") with special compound for extended tread life.
- Wide footprint and square shoulder design for improved stability and mileage.
- Multi-sipes improve traction in wet conditions and dissipate heat for prolonged tread life.



Applications:

- Intrastate & Interstate Buses
- Regional Trucks
- Long Distance Trucks





S768 EFT