

S758

ON/OFF-ROAD TRACTION

Code	Size	LI / SR	PR	T.D.	RIM	O.D.	S.W.	S.L.R.	Load Capacity		
									32nds	in.	in.
									lbs.	lbs.	psi
5543059	11R22.5	146/143 K	16	31	8.25	42.2	10.9	19.6	6,610	6,005	120
5543060	11R24.5	149/146 K	16	31	8.25	43.9	10.9	20.6	7,160	6,610	120

The S758 is designed for severe off-road traction applications. With an extra-deep 31/32" tread depth and a rubber compound engineered to resist the most demanding environments, the S758 is ideal for construction, logging, and off-road environments. Stone ejectors resist the damages caused by stone retention, and an open shoulder with tapered sidewalls aid in lateral stability.

Features & Benefits

- Open grooves to maximize self-cleaning.
- Stone ejectors protect tire against stone drilling.
- Extra deep tread (31/32") tread depth.
- M&S lug pattern designed specifically for on and off-road applications.

Applications:

- Dump Trucks
- Logging Trucks
- Mix Concrete Trucks



S758

ON/OFF-ROAD TRACTION



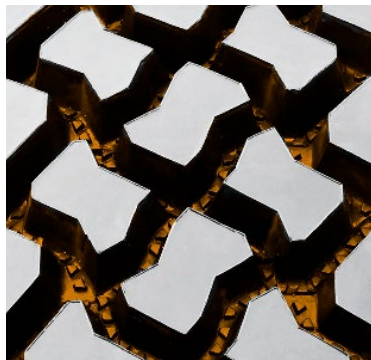
The S758 is designed for severe off-road applications. With an extra-deep 31/32" tread depth and a rubber compound engineered to resist the most demanding environments, the S758 is ideal for construction, logging, and off-road environments. Stone ejectors resist the damages caused by stone retention. An open shoulder with tapered sidewalls aid in lateral stability.

QUALITY:	Every Sailun S758 tire is tested for uniformity at the factory to ensure maximum ride comfort and quality performance.
WARRANTY:	All Sailun products are covered by an industry leading new 6-year warranty * See Sailun Medium Radial Truck Tire Limited Warranty for complete details.
RETREADABILITY:	Two Recap Casing Warranty with a Casing Retread Allowance.
COMPETITIVE PRODUCTS:	Michelin X WORKS GRIP D, Bridgestone M775



Traction is the primary function of this tire in logging applications. It will perform well in the most severe on and off road conditions including mud and snow.

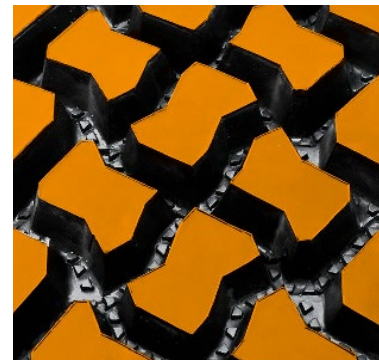
Stone ejectors protect tire against stone drilling.



Open grooves to maximize self-cleaning. Extra deep tread (31/32") tread depth.



M&S lug pattern designed specifically for on and off-road applications.



* Every effort had been made to verify the accuracy of the listed specifications. TBC Corporation and TBC Brands cannot be held responsible for any discrepancies, and as such, the information should be considered as approximate.