

S753 EFT

OPEN SHOULDER DRIVE

Code	Size	LI / SR	PR	T.D. 32nds	RIM in.	O.D. in.	S.W. in.	S.L.R. in.	L.C.C.		
									Single lbs.	Dual lbs.	A.P. psi
5543673*	10R22.5	141/139 M	14	23	7.50	40.6	10.0	18.7	5,675	5,355	115
5543264	11R22.5	144/142 M	14	25	8.25	41.8	10.9	19.3	6,175	5,840	105
5542971	11R22.5	146/143 M	16	25	8.25	41.8	10.9	19.3	6,610	6,005	120
5543251	11R24.5	146/143 M	14	25	8.25	43.9	10.9	20.5	6,610	6,005	105
5542987	11R24.5	149/146 M	16	25	8.25	43.9	10.9	20.5	7,160	6,610	120
5542386*	255/70R22.5	140/137 L	16	24	7.50	36.9	10.0	17.1	5,510	5,070	120
5540527	295/75R22.5	144/141 L	14	25	9.00	40.5	10.8	20.2	6,175	5,675	110
5540526	285/75R24.5	144/141 L	14	25	8.25	41.9	10.8	19.6	6,175	5,675	110

The S753 is a premium open shoulder drive, excellent for regional and pickup applications. Featuring a center interlocking tread block designed for improved stability, the S753 delivers exceptional tread life.

Features & Benefits:

- Open shoulder design and tread grooves promote self-cleaning characteristics and improve traction.
- Central and edge siping for improved traction.
- Extra strong casing design for enhanced durability.
- Integrated central lugs for improved stability.
- Smartway Verified for lower rolling resistance and excellent fuel efficiency on highways.

Applications:

- Pickup and Delivery Trucks
- Intrastate and Interstate Buses
- Regional Trucks
- Line-Haul Trucks
- Local Buses
- Dump Trucks



SMARTWAY VERIFIED TIRE:
APPROVED FOR USE ON EPA SMARTWAY CERTIFIED EQUIPMENT

S753 EFT

OPEN SHOULDER DRIVE



A popular open shoulder design with many years of proven performance in regional applications. This tire offers good all-weather performance in many operating conditions. Whether driving a local delivery truck or a going long distance, this Smartway verified open shoulder drive tire is the right choice.

QUALITY: The Sailun S753 EFT has been approved for use on EPA Smartway certified equipment with a superior 4 belt package casing provides durability and excellent retreadability.

WARRANTY: All Sailun products are covered by an industry leading 6 year warranty.

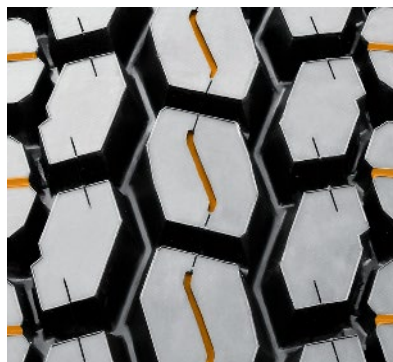
RETREADABILITY: Two Recap Casing Warranty with a Casing Retread Allowance.
* See Sailun Medium Radial Truck Tire Limited Warranty for complete details.

COMPETITIVE PRODUCTS: Michelin XDE M/S, Goodyear G182, G622, Bridgestone M711



The S753 has an extra strong casing design for enhanced durability. Open shoulder design and deep tread grooves promote self-cleaning and improve traction in every condition. This tire is ideal for the owner operator looking for a value priced product with Smartway verified quality.

Central and edge siping for improved traction.



Open shoulder design and tread grooves promote self-cleaning characteristics and improve traction.



Integrated central lugs for improved stability.



* Every effort had been made to verify the accuracy of the listed specifications. TBC Corporation and TBC Brands cannot be held responsible for any discrepancies, and as such, the information should be considered as approximate.