

NOW 3PMSF CERTIFIED ❄️



S740 ❄️

REGIONAL METRO ALL WEATHER DRIVE

| Code | Size | LI / SR | PR | L.C.C. | | | | | | | | |
|---------|-------------|-----------|----|--------|------|-------|------|--------|--------|------|------|--|
| | | | | T.D. | RIM | O.D. | S.W. | S.L.R. | Single | Dual | A.P. | |
| | | | | 32nds | in. | in. | in. | in. | lbs. | lbs. | psi | |
| 5541271 | 225/70R19.5 | 128/126 L | 14 | 21 | 6.75 | 32.17 | 8.9 | 15.4 | 3970 | 3750 | 110 | |
| 5541270 | 245/70R19.5 | 135/133 L | 16 | 21 | 7.50 | 33.27 | 9.8 | 15.4 | 4805 | 4540 | 125 | |

The Sailun S740 premium regional drive tire is one of the first light commercial truck tires to receive the 3 Peak Mountain Snowflake (3PMSF) certification.

The S740's combination of aggressive tread block design and extensive siping make this tire ideal for wet, mud, snow and ice conditions. The 3PMSF symbol lets you know that this is a superior performing all weather tire that has met the requirements for severe snow service set by the Rubber Manufacturers Association (RMA).

Features & Benefits

- Extensive sipes in tread pattern for exceptional winter traction.
- Aggressive tread blocks for outstanding snow and mud handling.
- Open tread pattern cleans out well in snow and mud conditions.

Applications:

- Regional Trucks
- Pick-up and Delivery Trucks
- Tow Trucks
- Cold Weather Applications



NOW 3PMSF CERTIFIED 

S740

REGIONAL METRO ALL WEATHER DRIVE



Looking for a traction tire that delivers in regional applications with four season traction in mind? Then look no further, the Sailun S740 has been approved for severe wet, mud, snow and ice conditions which will keep you on the road. No matter the conditions, this tire will provide the safety and security the driver is looking for due to the exceptional tread design and rubber compound.

QUALITY: The Sailun S740 premium regional drive tire is one of the first light commercial truck tires to receive the 3 Peak Mountain Snowflake (3PMSF) certification.

WARRANTY: All Sailun products are covered by an industry leading new 6 year warranty.

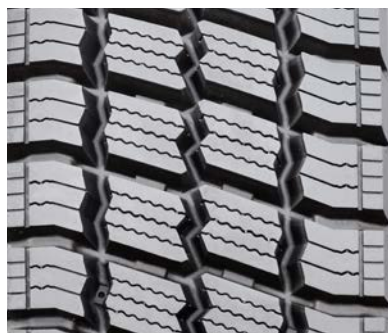
RETREADABILITY: Two Recap Casing Warranty with a Casing Retread Allowance.
* See Sailun Medium Radial Truck Tire Limited Warranty for complete details.

COMPETITIVE PRODUCTS: Michelin XDS-2, Goodyear G622 RSD, Bridgestone M729F, M724F



The S740's combination of aggressive tread block design and extensive siping make this tire ideal for wet, mud, snow and ice conditions. All weather performance, premium construction, smooth ride comfort and handling ideal for independent owner/operators looking for a Tier 2 quality product at a fraction of the price. Superior 4 belt package casing provide durability and retreadability, solid construction provides Tier 2 ride comfort at significant savings.

Extensive sipes in tread pattern for exceptional ice and snow traction



Aggressive tread blocks for outstanding snow and mud handling



Open tread pattern cleans out well in snow and mud conditions



* Every effort had been made to verify the accuracy of the listed specifications. TBC Corporation and TBC Brands cannot be held responsible for any discrepancies, and as such, the information should be considered as approximate.