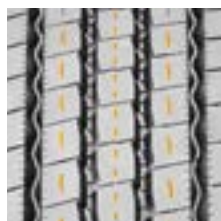


SAILUN S665 EFT STEER ALL-POSITION

Code	Size	LI / SR	PR	Load Capacity								
				T.D.	RIM	O.D.	S.W.	S.L.R.	Single	Dual	A.P.	
				32nds	in.	in.	in.	in.	lbs.	lbs.	psi	
5540147	11R22.5	144/142 M	14	18	8.25	41.5	10.9	19.3	6175	5840	105	
5540148	11R22.5	146/143 M	16	18	8.25	41.5	10.9	19.3	6610	6005	120	
5540150	11R24.5	146/143 M	14	18	8.25	43.5	10.9	20.3	6610	6005	105	
5540151	11R24.5	149/146 M	16	18	8.25	43.5	10.9	20.3	7160	6610	120	
5540149	295/75R22.5	144/141 M	14	18	9.00	39.9	11.7	19.4	6175	5675	110	
5540152	285/75R24.5	144/141 M	14	18	8.25	41.3	11.1	18.7	6175	5675	110	



The Sailun S665 EFT is an all-position radial truck tire optimized for steer axles. This tire is engineered for use in regional, interstate and metro applications on a large array of vehicle platforms.

Features & Benefits

- Smartway Verified for lower rolling resistance and excellent fuel efficiency on highways.
- Micro-sipes within groove walls for enhanced traction in all weather conditions.
- Variable tread angles for self-cleaning and stone ejection.
- Reinforced sidewall for increased tread life.



Applications:

- Intrastate & Interstate Buses
- Regional Trucks
- Freight Trucks
- Local Buses
- Transit
- Pick-up & Delivery Trucks
- Tractor Trailers





S665 EFT