

S605 EFT

PREMIUM LINE-HAUL STEER

Code	Size	LI / SR	PR	T.D.	RIM	O.D.	S.W.	S.L.R.	L.C.C.		
									32nds	in.	in.
8200180	11R22.5	146/143 M	16	18	8.25	41.3	10.9	19.3	6,610	6,005	120
8200182	11R24.5	149/146 M	16	18	8.25	43.4	10.9	20.3	7,160	6,610	120
8200184	295/75R22.5	146/143 M	16	18	9.00	40.0	10.8	18.7	6,610	6,005	120
8200186	285/75R24.5	147/144 M	16	18	8.25	41.4	10.8	19.4	6,780	6,175	120

The S605 EFT is Sailun's premium line-haul steer tire, featuring a decoupling groove and five wide ribs for a stable ride at all speeds. Stone ejectors minimize tire damage, while extra-wide grooves and S-sipes improve traction for excellent hydroplaning resistance.

Features & Benefits

- Decoupling groove helps to minimize irregular wear
- S-sipes improve traction in wet conditions and dissipate heat for prolonged tread life
- Unique tread wall bite edges reduce irregular wear and improve traction
- Stone ejectors protect tire from stone drilling
- SmartWay Verified for lower rolling resistance and excellent fuel efficiency on highways

Applications:

- Line-Haul Trucks
- Intrastate & Interstate Buses
- Regional Trucks



SMARTWAY VERIFIED TIRE:
APPROVED FOR USE ON EPA SMARTWAY CERTIFIED EQUIPMENT

S605 EFT

PREMIUM LINE-HAUL STEER



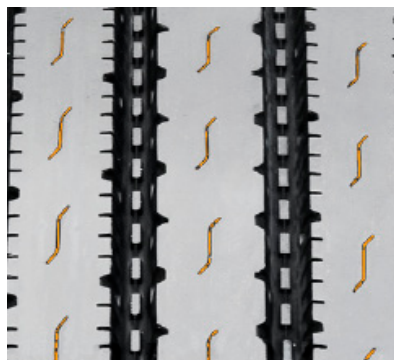
For the line-haul driver, steer tires must provide comfort, exceptional handling and a stable ride. The Sailun S605 EFT has been engineered with a casing design and wide grooves which answer to this, all while being approved for use on EPA SmartWay certified equipment.

QUALITY:	The S605 EFT is Sailun's premium line-haul steer tire. Uniformity is tested on every tire at the factory to ensure maximum ride comfort and performance.
WARRANTY:	All Sailun products are covered by a new, industry-leading 8-year warranty * See Sailun Medium Radial Truck Tire Limited Warranty for complete details.
RETREADABILITY:	Three Recap Casing Warranty with a Casing Retread Allowance
COMPETITIVE PRODUCTS:	Michelin XZA-3, Goodyear G399A, Bridgestone R283 Ecopia

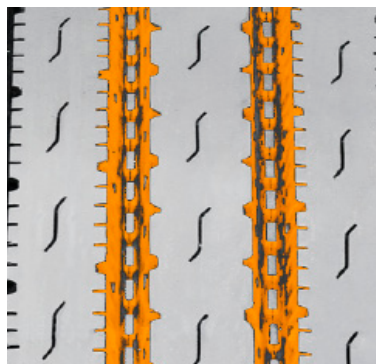


Decoupling grooves and five wide grooves provide ride stability at all speeds and minimizes irregular wear. Excellent performance in wet conditions and unique tread wall bite edges improve traction. The S605 EFT is SmartWay verified to provide low rolling resistance for improved fuel economy and cost savings. Obtain Tier 2 quality at a significant savings with Sailun.

S-sipes improve traction in wet conditions and dissipate heat for prolonged tread life.



Stone ejectors protect tire from stone drilling.



Decoupling groove helps to minimize irregular wear.



Every effort had been made to verify the accuracy of the listed specifications. TBC Corporation and TBC Brands cannot be held responsible for any discrepancies, and as such, the information should be considered as approximate.