



ICEBLAZER WSL2

Studless Performance Winter Tire

The WSL2 is a studless performance winter tire, providing excellent slush, snow, and wet traction in cold climate conditions, while delivering a quiet and comfortable ride on dry roads. • Green technology: Extensive use of enviro-friendly materials that meet European REACH requirements. • Specially formulated compounds and advanced dispersion technology keeps rubber flexible for maximum performance in extreme cold temperatures improving safety and handling in northern winter conditions.

PERFORMANCE RATINGS:



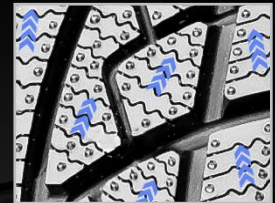
Size	Product Code	L.I. / S.R.	T.D. 32/in.	O.D. in.	S.W. in.	R.W. in.
155/80R13	S2001249	79T	10	22.8	6.2	4.50
175/70R13	S2001254	82T	11	22.7	7.0	5.00
175/70R14	S2001255	84T	11	23.7	7.0	5.00
185/70R14	S2001990	88T	11	24.2	7.3	5.50
175/65R14	S2001253	82T	11	22.9	7.0	5.00
185/65R14	S2001260	86T	11	23.5	7.4	5.50
185/60R14	S2001257	82T	11	22.8	7.4	5.50
175/65R15	S2001794	84T	11	23.9	7.0	5.00
185/65R15	S2001261	88T	11	24.5	7.4	5.50
195/65R15	S2001263	91T	11	25.0	7.9	6.00
205/65R15	S2001991	94H	11	25.5	8.1	6.00
185/60R15	S2001259	88T	11	23.7	7.4	5.50
195/60R15	S2001262	88H	11	24.2	7.9	6.00
185/55R15	S2001256	82H	11	23.0	7.6	6.00
195/55R15	S2001797	85H	11	23.6	7.8	6.00
195/50R15	S2001795	82H	11	22.7	7.9	6.00
215/65R16	S2001272	98H	11	27.0	8.7	6.50
205/60R16	S2001268	92H	11	25.7	8.2	6.00
205/60R16	S2001269	96H XL	11	25.7	8.2	6.00
215/60R16	S2001271	95H	11	26.1	8.7	6.50
205/55R16	S2001266	91H	11	24.9	8.4	6.50
215/55R16	S2001270	93H	11	25.3	8.9	7.00
225/55R16	S2001273	99H XL	11	25.6	9.2	7.00
205/50R17	S2001798	93H XL	11	25.1	8.4	6.50
225/50R17	S2001796	98H XL	11	25.9	9.2	7.00



Unique L-shaped main grooves:
Designed specifically to promote aggressive bite in deep snow, slush, and wet conditions without compromising road noise.



X-grooves in outer tread block:
Optimized to provide maximum self-cleaning characteristics to promote maximum stability and multi-directional grip in snow, slush, and wet conditions while minimizing road noise.



Multi-directional high density siping:
Engineered to maximize directional grip on snow and ice while also minimizing road noise.