

	TIRE LINE	FEATURES/BENEFITS	SIZE LINEUP
LINE HAUL STEER	S605 EFT 	<ul style="list-style-type: none"> Decoupling groove helps to minimize irregular wear. S-sipes improve traction in wet conditions and dissipate heat for prolonged tread life. Unique tread wall biting edges reduce irregular wear and improve traction. Stone ejectors protect against stone retention and drilling. SmartWay Verified for lower rolling resistance and excellent fuel efficiency on highways. 	 11R22.5 TL 146/143M 11R24.5 TL 149/146M 295/75R22.5 TL 146/143M 285/75R24.5 TL 147/144M
	S768 EFT 	<ul style="list-style-type: none"> Wide footprint and square shoulder design for improved stability and mileage. Extra-deep tread pattern with special compound for extended tread life. Multi-sipes improve traction in wet conditions and dissipate heat for prolonged tread life. Stone ejectors protect against stone retention and drilling. SmartWay Verified for lower rolling resistance and excellent fuel efficiency on highways. 	 11R22.5 TL 146/143M 11R24.5 TL 149/146M 295/75R22.5 TL 144/141L 285/75R24.5 TL 144/141L
LINE HAUL DRIVE	S705 EFT 	<ul style="list-style-type: none"> Light weight to improve fuel economy. Long wearing for low cost per mile. Alternative low cost option for trade trucks. Smartway Verified. 	 445/50R22.5 TL 161M
	SDL70 EFT 	<ul style="list-style-type: none"> Wide footprint and deep tread for extended mileage. "Slim bead" for reduced rolling resistance. Advanced Compound Technology for maximum mileage, wet traction and rolling resistance. 	 11R22.5 146/143 M 11R24.5 149/146 M 295/75R22.5 146/143 M 285/75R24.5 144/141 L
TRAILER	S622 	<ul style="list-style-type: none"> Decoupling grooves help minimize irregular wear. V-sipes improve traction in wet conditions and dissipate heat for prolonged tread life. Main groove stone ejectors protect tire against stone drilling. 5 full-depth grooves for excellent traction in wet and dry conditions. 	255/70R22.5 TL 140/137L*
	S624 EFT 	<ul style="list-style-type: none"> Decoupling grooves help minimize irregular wear. Micro-sipes improve traction in wet conditions and dissipate heat for prolonged tread life. Advanced Compound Technology for maximum mileage, wet traction and rolling resistance. 	 11R22.5 144/142 M 11R24.5 146/143 M 295/75R22.5 144/141 M 285/75R24.5 144/141 M
	S668 	<ul style="list-style-type: none"> 5-rib tread pattern promotes stable on-road performance and even tread wear. Cut and chip resistant rubber compound. Solid shoulder design promotes lateral stability for all positions. Wide tread footprint maximizes tread life. 	11R22.5 TL 146/143M 11R24.5 TL 149/146M 255/70R22.5 TL 140/137L 295/75R22.5 TL 144/141M
	S696 EFT 	<ul style="list-style-type: none"> Lightweight to improve fuel economy. Long wearing for low cost per mile. Alternative low cost option for trade trailers. Smartway Verified. 	 445/50R22.5 TL 161M
REGIONAL STEER/ALL-POSITION	S606 EFT 	<ul style="list-style-type: none"> Wide footprint and square shoulder design for improved stability and mileage. Extra-deep tread pattern (21/32") with special compound for extended tread life. Multi-sipes improve traction and dissipate heat for prolonged tread life. Unique tread wall grooves help reduce irregular wear and improve traction. Stone ejectors protect tire from stone drilling. SmartWay Verified for lower rolling resistance and excellent fuel efficiency on highways. 	 11R22.5 TL 146/143M 12R22.5 TL 152/148M* 11R24.5 TL 149/146M 295/75R22.5 TL 144/141L 295/80R22.5 TL 152/148M* 315/80R22.5 TL 156/150L* 285/75R24.5 TL 144/141L
	S665 EFT 	<ul style="list-style-type: none"> Micro-sipes within groove walls for enhanced traction in all weather conditions. Variable tread angles for self-cleaning and stone ejection. Reinforced sidewall for increased tread life. SmartWay Verified for lower rolling resistance and excellent fuel efficiency on highways. 	 11R22.5 TL 146/143M 11R24.5 TL 149/146M 295/75R22.5 TL 144/141M 285/75R24.5 TL 144/141M
REGIONAL/ALL-POSITION	S637 	<ul style="list-style-type: none"> Multi-sipes improve traction in wet conditions and dissipate heat for prolonged tread life. Tread pattern designed to reduced rolling resistance for improved fuel economy. Unique tread wall grooves help reduce irregular wear and improve traction. 	235/75R17.5** 143/141 L 245/70R17.5** 143/141 K 265/70R19.5 140/138 M 10R22.5 141/139 M 255/70R22.5 140/137 M 275/70R22.5 148/145 M

WARRANTY: 8-Year Workmanship and Materials Warranty / 8-Year, 3-Retread Radial Casing Warranty (445/50R22.5 has 2-Retread Warranty)

*non-EFT

NOTE: Every effort has been made to verify the accuracy of the listed specifications. NTW cannot be held responsible for any discrepancies, and as such, the information should be considered approximate.

TIRE LINE

FEATURES/BENEFITS

SIZE LINEUP

REGIONAL/ALL-POSITION

S637 SP



- Multi-sipes improve traction in wet conditions and dissipate heat for prolonged tread life.
- Shallow tread designed to reduce rolling resistance for improved fuel economy.
- Unique tread wall grooves help reduce irregular wear and improve traction.
- Sidewall protector ribs offer curb abrasion resistance.

215/75R17.5 128/126 L*
215/75R17.5 135/133 L**
225/70R19.5 128/126 L
245/70R19.5 136/134 M

REGIONAL DRIVE

S753 EFT

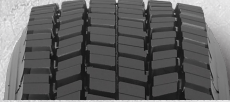


- Open shoulder design and tread grooves promote self-cleaning and improve traction.
- Central and edge siping for improved traction.
- Extra-strong casing design for enhanced durability.
- Integrated central lugs for improved stability.
- SmartWay Verified for lower rolling resistance and excellent fuel efficiency on highways.



10R22.5 TL 141/139M*
11R22.5 TL 146/143M
11R24.5 TL 149/146M
255/70R22.5 TL 140/137L*
295/75R22.5 TL 144/141L
285/75R24.5 TL 144/141L

S737 SP



- Integrated tie bars reduce irregular wear and promote increased stability.
- Angled lug and siping design improves overall traction and wet grip.
- 3-Peak Mountain Snowflake (3PMSF) certification denotes a true winter tire.
- Sidewall protector ribs offer curb abrasion resistance.



215/75R17.5 TL 135/133L
225/70R19.5 TL 128/126L
245/70R19.5 TL 136/134M

S759



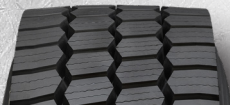
- Shoulder block sipes for enhanced ice and snow traction.
- Aggressive tread blocks for outstanding snow and mud handling.
- Open tread pattern cleans out well in snow and mud conditions.
- 3-Peak Mountain Snowflake (3PMSF) denotes a true winter tire.



225/70R19.5 128/126 M
245/70R19.5 135/133 M

REGIONAL ALL-SEASON DRIVE

SW01



- 3-Peak Mountain Snowflake (3PMSF) certification for severe winter service.
- Extensive sipes in tread pattern for exceptional mud, snow and ice traction.
- Aggressive tread blocks for outstanding snow and mud handling.
- Tread pattern promotes self-cleaning and resists stone drilling.



11R22.5 TL 146/143L
11R24.5 TL 149/146L

S740



- Extensive sipes in tread pattern for exceptional ice and snow traction.
- Aggressive tread blocks for outstanding snow and mud handling.
- Open tread pattern cleans out well in snow and mud conditions.
- 3-Peak Mountain Snowflake (3PMSF) certification denotes a true winter tire.



225/70R19.5 TL 128/126L
245/70R19.5 TL 135/133L

S757

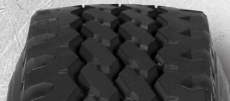


- Extra-wide footprint promotes stability, improved handling, even treadwear and long tread life.
- Extensive sipes improve traction in wet conditions and dissipate heat for prolonged tread life.
- Tie-bars on external lugs add rigidity to lugs to prevent irregular wear and improve stability.

11R22.5 TL 146/143L
11R24.5 TL 149/146L

MIXED SERVICE/ALL-POSITION

S815



- Large deep shoulder grooves for improved traction and heat dissipation.
- Interlocking ribs promote improved stability and smoother wear.
- Wide footprint and unique shoulder design for improved stability.
- Specially formulated compound and deep tread depth for improved tread life.
- Stone ejectors protect tire from stone drilling.

12R22.5 TL 152/149G

S817



- Solid shoulder for scrub resistance.
- Interlocking ribs promote smooth wear and extend mileage.
- Wide footprint and unique shoulder design for improved stability.
- Optimized tread void angle to reduce stone retention.
- Specially formulated compound for cut/chip resistance.

11R22.5 146/143 L
11R24.5 149/146 L
255/70R22.5 140/137 L
275/70R22.5 148/145 K
315/80R22.5 161/157 G

MIXED SERVICE WIDE-BASE

S825

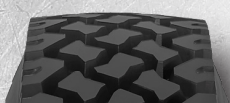


- Wide footprint and unique shoulder design for improved stability.
- Interlocking lugs promote improved stability and smoother wear.
- Specially formulated compound for improved tread life.
- Stone ejectors protect tire against stone drilling.

385/65R22.5 TL 158K

ON/OFF-ROAD TRACTION

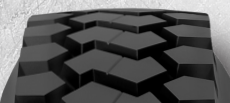
S758



- Open grooves to maximize self-cleaning.
- Stone ejectors protect tire against stone drilling.
- Extra-deep tread depth (31/32").
- M&S lug pattern designed specifically for on and off-road applications.

11R22.5 TL 146/143K
11R24.5 TL 149/146K

S917



- Aggressive multi-lug design.
- Deep tread depth for excellent tread life.
- Open shoulder design for excellent traction.

11R22.5 TL 148/145G
11R24.5 TL 149/146G
12.00R24 (SET) TT/T/F 160/157F
12R22.5 TL 152/149G

WARRANTY: 8-Year Workmanship and Materials Warranty / 8-Year, 3-Retread Radial Casing Warranty (445/50R22.5 has 2-Retread Warranty)

*non-EFT

NOTE: Every effort has been made to verify the accuracy of the listed specifications. NTW cannot be held responsible for any discrepancies, and as such, the information should be considered approximate.